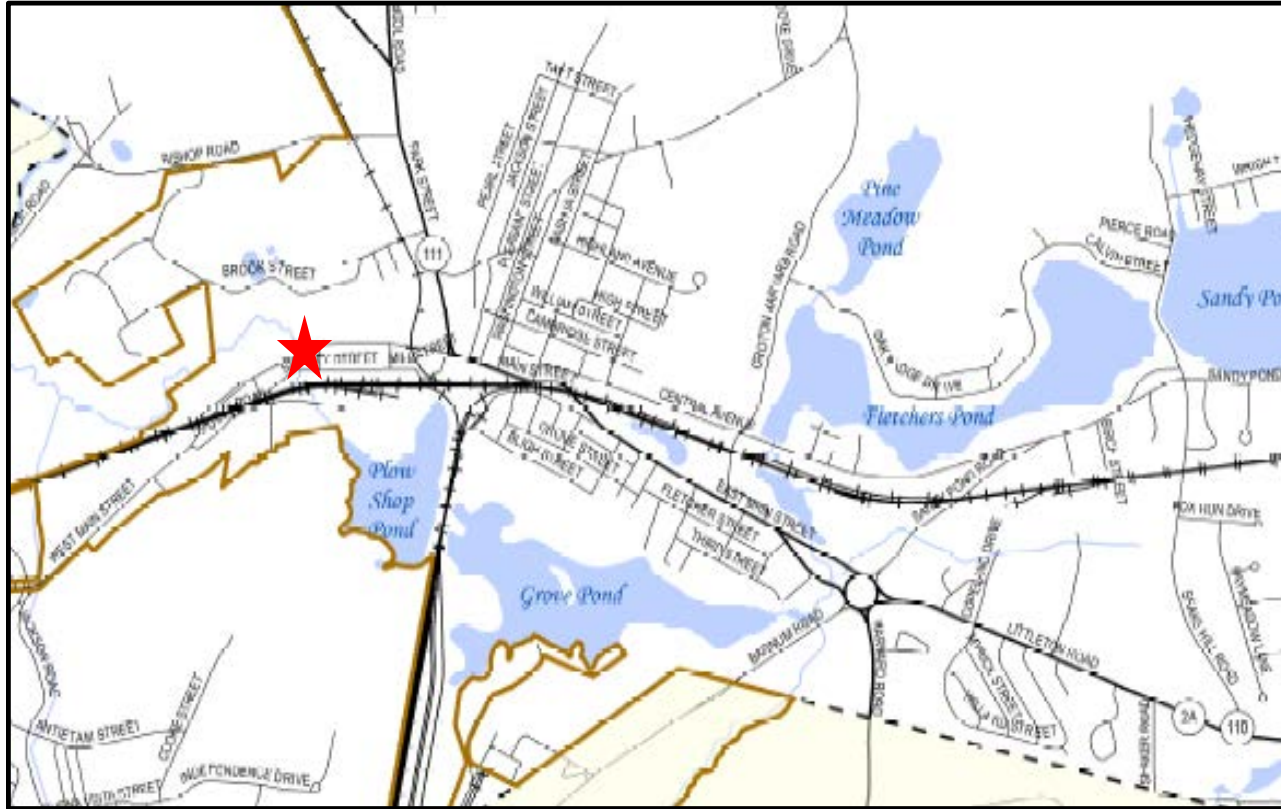


West Main Street Stone Culvert

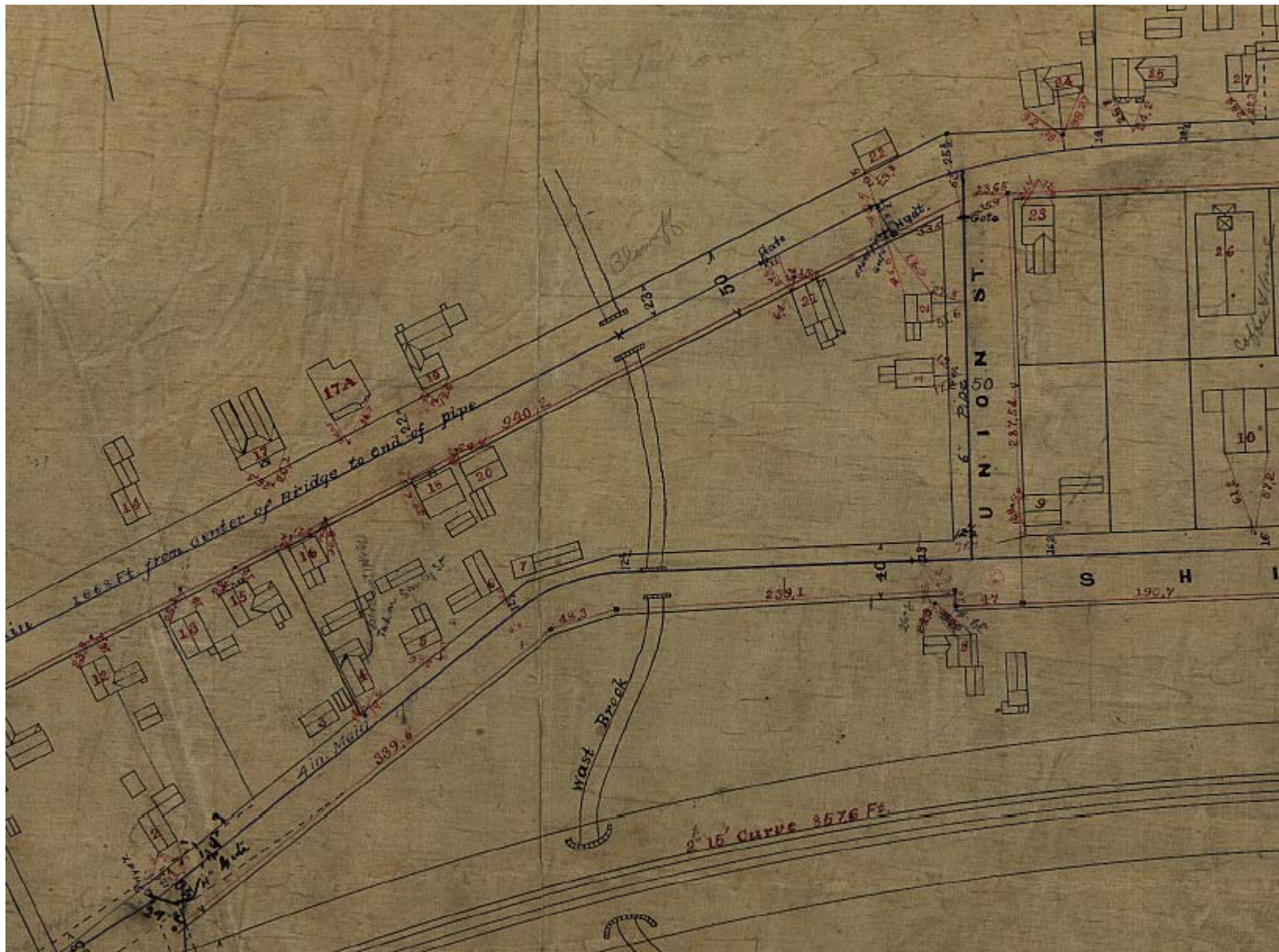
Presentation to Ayer Board of Selectmen
July 14, 2015

Mark Wetzel P.E.
Superintendent of Public Works

Bridge Data Summary



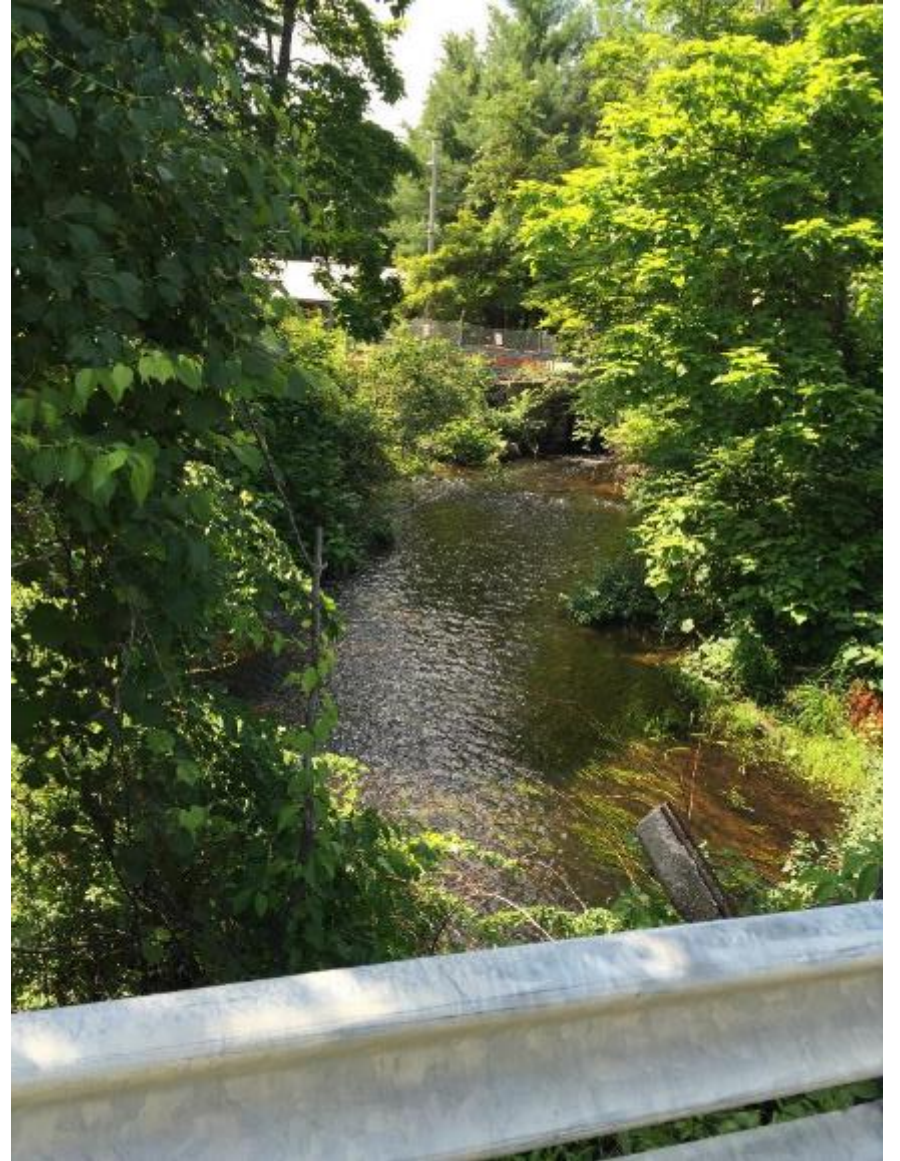
- Crosses Nonacoicus Brook – outlet from Plow Shop Pond
- Located downstream from closed Shirley Street Bridge
- Approximate dimensions – 10 foot span by 52 feet wide
- Type and date of construction unknown
- W Main Street has average daily traffic of 8000 vehicles



1912 Plan of West Main Street



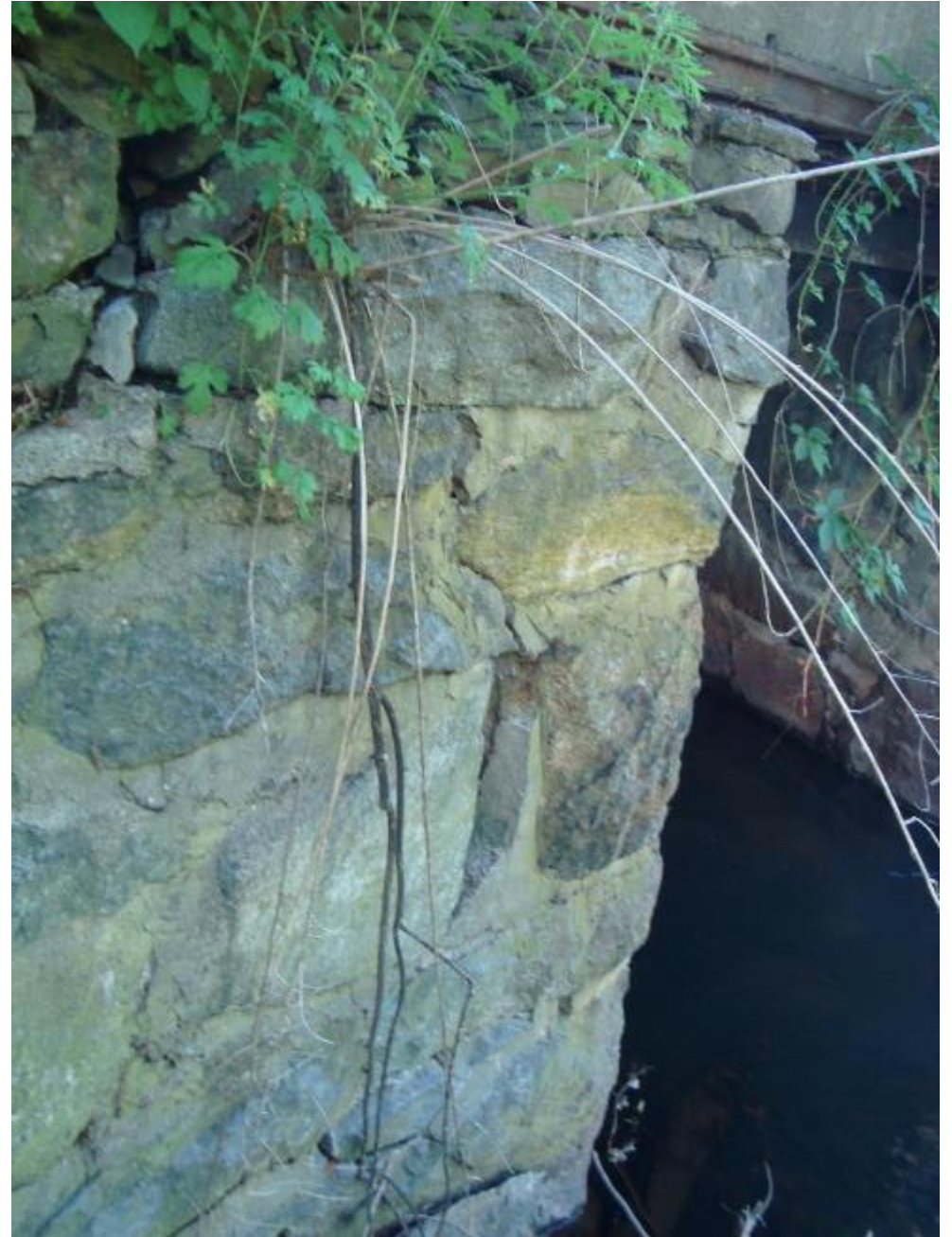
Looking West



Upstream View



South Abutments





View of South end – Note large crack in stone masonry



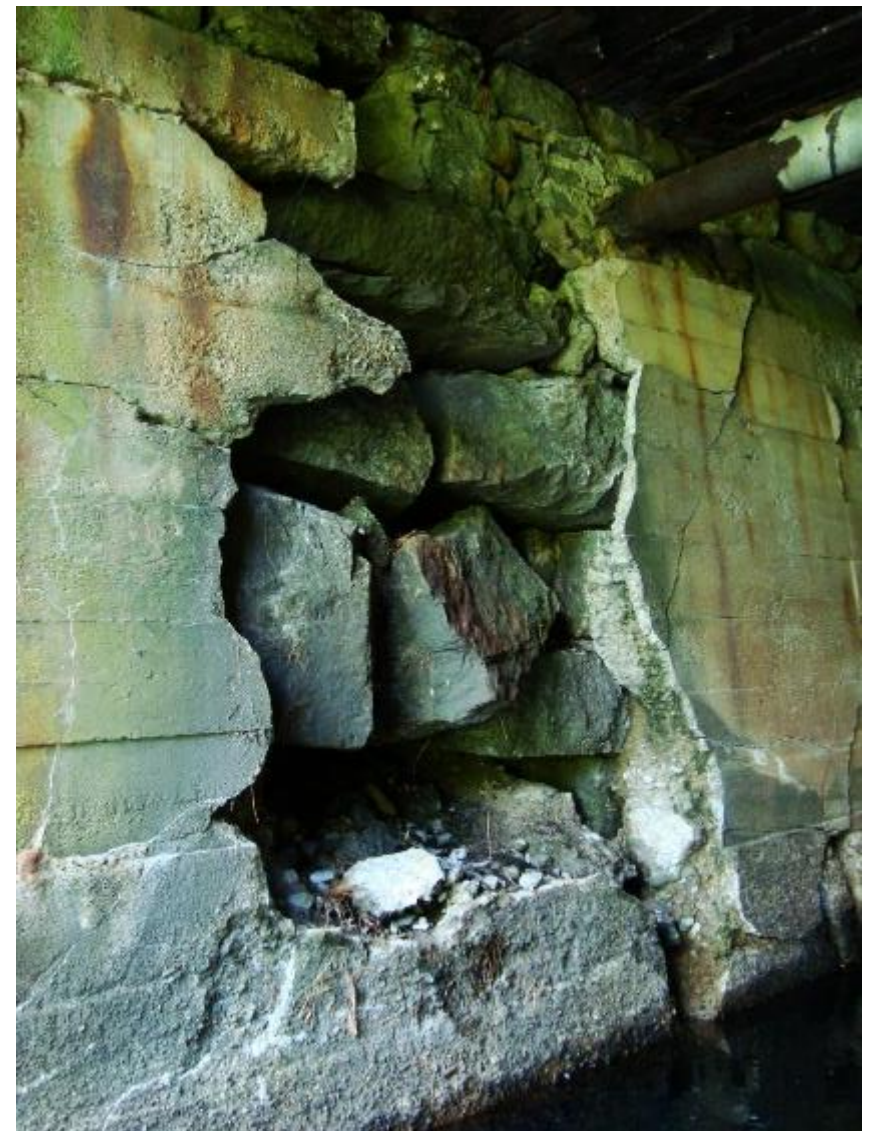
Underside of bridge deck shows rust and metal loss



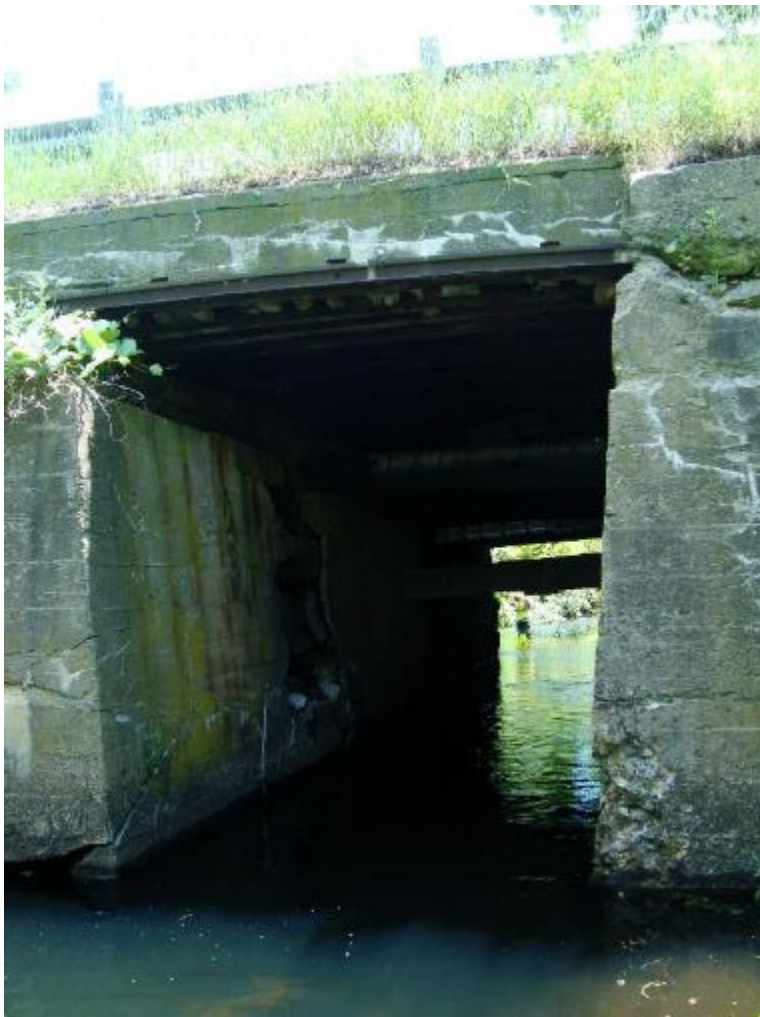
Numerous pipelines pass through the support structure



Note gas main is supporting cross member



Scouring of abutment wall



North view – note large cracks in concrete



2 Catch basins discharge into culvert
small sink hole developing