

FORM B
TOWN OF AYER CAPITAL BUDGET REQUEST BACKUP DOCUMENTATION

DEPARTMENT:

FISCAL YEAR: 2023

Please provide written explanation and justification and any appropriate backup materials that would be necessary to understand and consider this request.

Fiscal Year of Request: 2023

Item or Project: Final Phase Depot Square Renovations

Explanation of Request: After Hutter completes Phase 3 of Depot Square in the Spring of 2022, there are 3 remaining items that MART could not fund in the project: the waiting shelter, benches/trash receptacles, and landscaping/loam&seeding.

Cost Justification: MART had to remove the waiting shelter, benches/trash receptacles and landscaping from their contract with Hutter due to cost. Depot Square is laid out to accommodate a shelter and benches. The Town would like to completely finish the project in the Summer of 2022.

Benefit to the Town: Full completion of Depot Square is the final piece in an over 25-year project relating to Commuter Rail and Rail Trail Access in Downtown Ayer.

Alternative:

Department Head Signature: 

Date: 10/29/21

FORM A
TOWN OF AYER CAPITAL BUDGET REQUEST FORM

Town Manager's Office/Economic & Community Development


FISCAL YEAR: 2023

Please list each capital request on this form with a dollar amount and in the appropriate year. Then complete a Form B for each request appearing on this sheet.

	Item Requested	FY23	FY24	FY25	FY26	FY27
1	Final Phase Depot Square Renovations	\$65,000				
2						
3						
4						
5						
Yearly Totals		\$65,000	\$0	\$0	\$0	\$0

Department Head Signature: _____

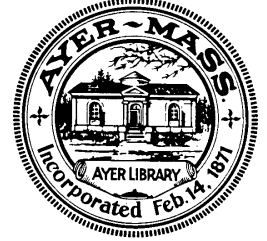
Date: _____


10/29/2021

Town of Ayer

Office of Community & Economic Development

Town Hall ♦ One Main Street ♦ Ayer, MA 01432 ♦ 978-772-8220 ♦ Ext. 141 & 142

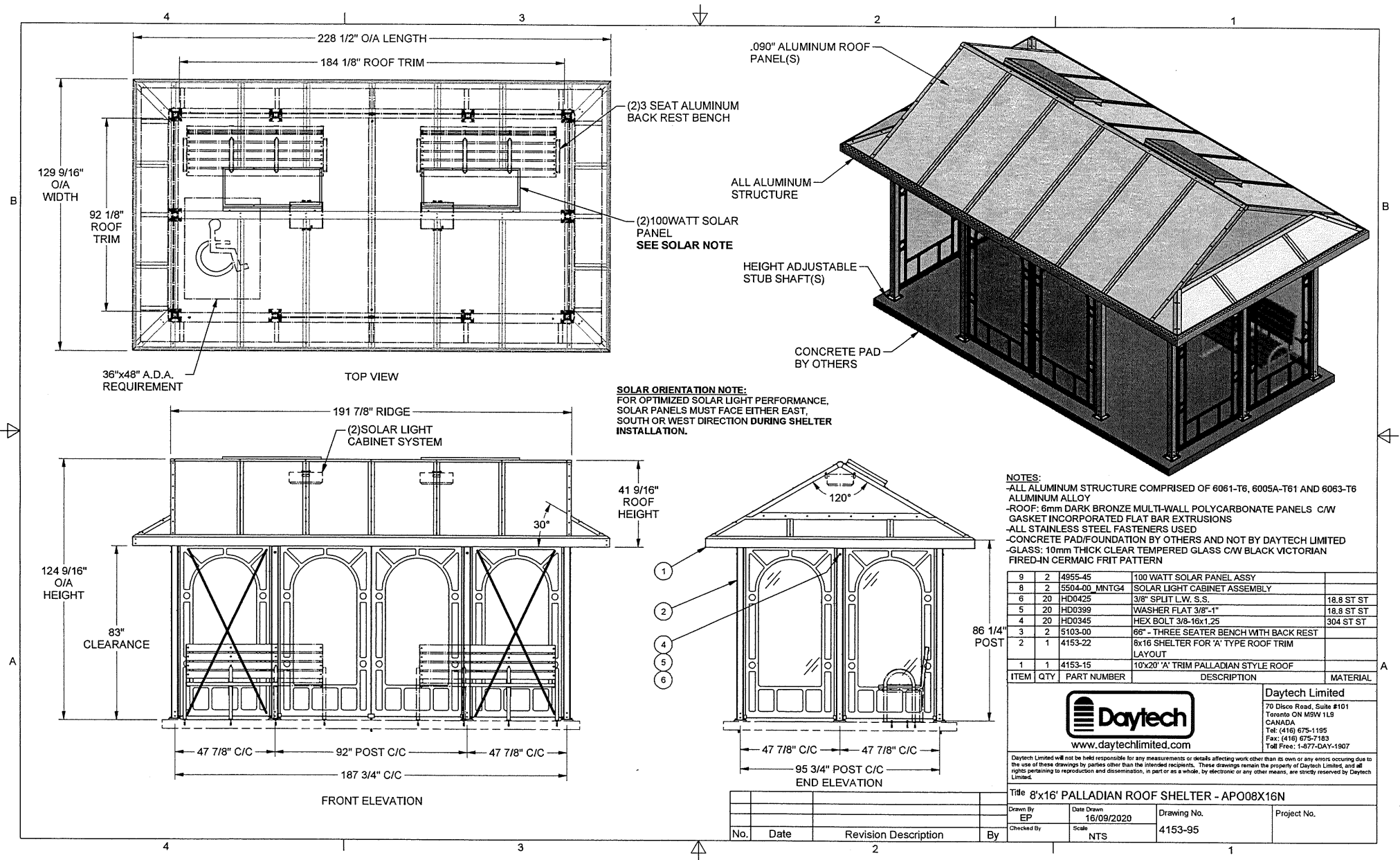


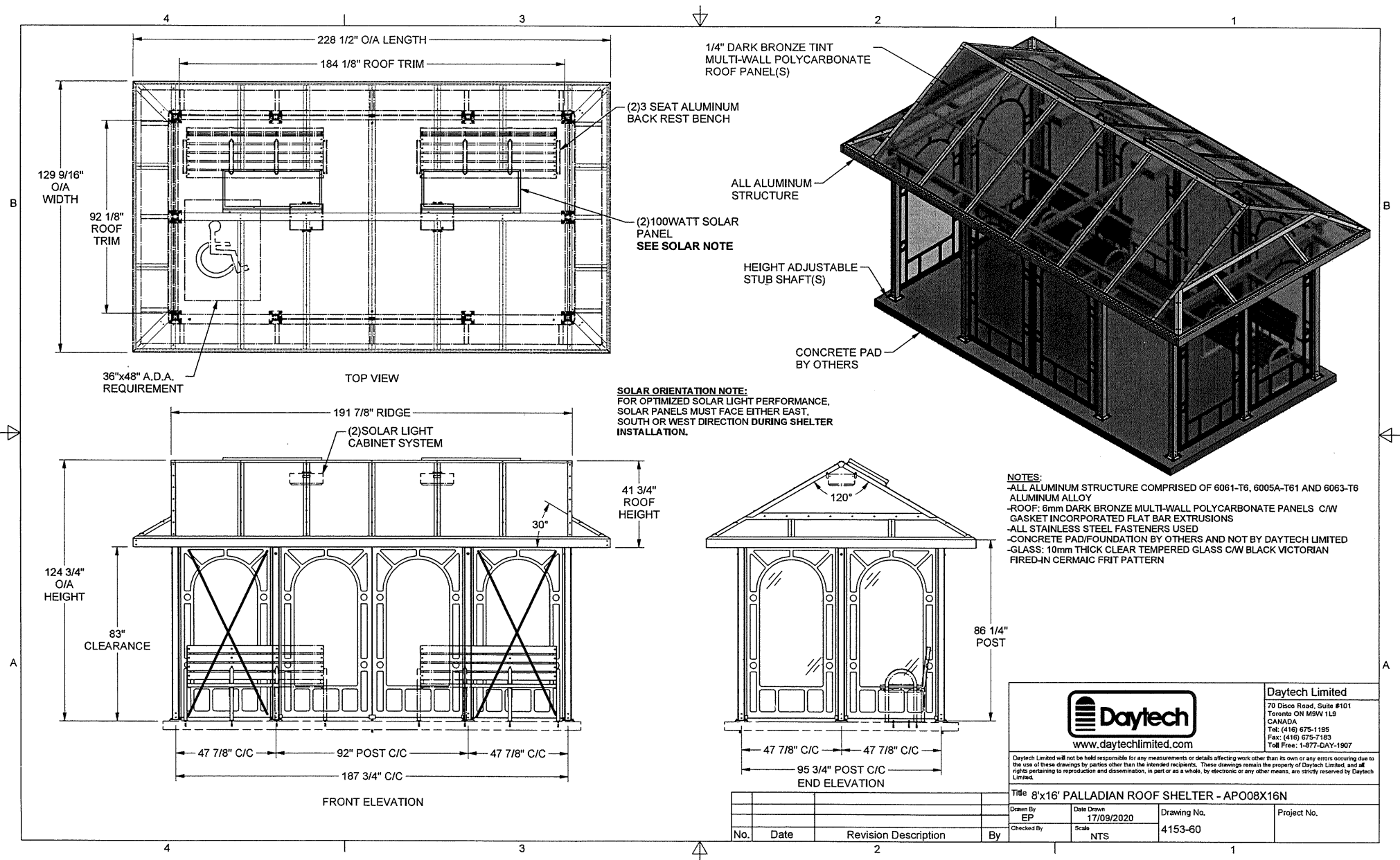
October 25, 2021

Depot Square Park: Town Portion/Design and Estimates

1. **Waiting Station and Shelter:** The proposed Depot Square Wait Station is modeled after the Wait Station at the Wachusett Commuter Rail Station. Please see the attached specifications and quote from Daytech Limited, Inc. dated 9/17/2020. I had a conversation with Daytech Limited on October 20, 2021 and was told that prices have risen 6 to 8 percent in the past year and it was unclear where they would be by July of 2022. I feel our best bet would be to estimate an addition 15 to 20 percent on the original 2020 estimate. The original estimate with shipping was \$28,290, (this does not include installation) an additional 15% would be \$4,244, while 20% would be an additional \$5,658. Installation of the Waiting Station is estimated at \$7,500. **COST: \$41,500**
2. **Benches and Trash Receptacles:** The Depot Square Park Design plans call for four benches. The AOCED are recommending Belson's commercial park bench with curved back in black steel, Model number CBPB-6CB -BK. In addition, we are recommending three trash receptacles similar to the ones in downtown be ordered. Total cost for both items is \$6,488. Please see attached estimate. Installation cost is \$1,000. **COST: \$7,500**
3. **Landscaping/Loam and Seed:** The current grass at Depot Square will be disturbed during construction of Phase 3, which begins on April 1, 2022. Based on bids received by MART in Fall of 2021 for loam/seed, we are estimating that our costs will not exceed \$13,500. **COST: \$13,500**

TOTAL COST REQUEST: \$65,000





John

iduthie@daytechlimited.com
Deposit →



Daytech Limited
70 Disco Road
Toronto, ON M9W 1L9

Tel 416. 675.1195 daytechlimited.com

Quotation 20-5354B Montachusett Regional Planning Commission / Ayer Stn / Bus shelter
Page 4

Pricing

Item	Model & description	Unit price	Qty	Extended Price
1	APF08X16N.VIC 'Palladian' bus shelter, described above <ul style="list-style-type: none">8' x 16' footprint, alum roof panelsVictorian glassnon-ad	\$ 23,295.00	1	\$ 23,295.
2	BE510300 ADA bench <ul style="list-style-type: none">3-seat with backrest	--	2	included
3	(Optional) SA550400 'Gen3' Solar interior light kit	1,250.00	2	Extra
3	Stamped structural drawings <ul style="list-style-type: none">2-sets, MA stamp	--	Lot	included
6	Freight to site <ul style="list-style-type: none">Ayer MA	--	Lot	** 4,995.
Total Price				US\$ 28,290.
Taxes				Extra

** Estimate only. Subject to change.

6% to 8%



Daytech Limited
70 Disco Road
Toronto, ON M9W 1L9

Tel 416. 675.1195 daytechlimited.com

September 16, 2020

Geoge Kahale
Montachusett Regional Planning Commission (MRPC)
464 Abbott Ave
Leominster, MA 01453

Tel 978.345.7376 x.307
Email gkahale@mrpc.org

Quotation # 20-5354B

'Historic' Bus Shelter
Ayer Station / Ayer MA

We are pleased to provide our quotation to supply and deliver a historic bus shelter for your site in Ayer MA.

We are offering our 'Palladian' model, which is the same style as the large bus shelter supplied by Daytech to MBTA for Wachusett Stn.

Daytech is one of North America's leading manufacturers of transit shelters, bicycle shelters, kiosks, street furniture and related signage. We have well over 70,000 products installed in every corner of North America, many in New England.

Daytech's unique extrusion system, including snap-in glazing, ensures that our shelters are quick to assemble and easy to repair if vandalized.

We quote as follows;

Item 1: APF08X16N.VIC 'Palladian' Bus Shelter, 8' x 16' non-ad

- 'Palladian' style pre-fabricated aluminum bus shelter
- Nominal roof size: 10'-10" W x 19'-0" L
- Nominal footprint size: 7'-11" W x 15'-7" L
- Full shelter with glass wall panels on all sides, includes (2) front entryways
- Per Daytech drawing # 4153-95
- Palladian compound peak roof composed of aluminum extrusion framework and aluminum roof ribs with **0.090" aluminum roof panels**
- Roof frame featuring 3-way keyed corners with 4" deep sockets for corner posts
- Glazing channel with integral gasket in underside of roof frame and pressure-fit glazing on posts for fast easy installation and elimination of exposed fasteners



Daytech Limited
70 Disco Road
Toronto, ON M9W 1L9

Tel 416. 675.1195 daytechlimited.com

Quotation 20-5354B Montachusett Regional Planning Commission / Ayer Stn / Bus shelter
Page 2

- Wall panels consisting of:
 - 3/8" (10mm) thick tempered safety glass, with fired-in safety graphics, "**Black Victorian**" pattern
 - All sides
- Surface mounted on adjustable aluminum levelling feet with 3" adjustment
- Extruded aluminum components finished in Daytech premium polyester powder coat
 - Standard Daytech color: jet black
 - Optional colors available at additional cost. Specify RAL color code
 - Painted in accordance with AAMA-2603-2 standards
- Stainless steel anchors and fasteners

Item 2: BE510300 ADA Bench, 3-seat c/w backrest

- 3-seat bench with backrest / ADA compliant
- Per drawing 5103-00
- 68 3/4" o/a L x 35 5/8" o/a height, 20" deep seat, 18 1/4"H backrest
- Aluminum frame including 1-1/2" dia tubular seat frame with armrests/anti-vagrant feature
- Aluminum seat and backrest support, 1-1/2" x 1-1/2" angle
- "Superwood" recycled plastic slats, 2" x 4", qty (5) for seat and (4) for backrests, color gray
- Finished with premium polyester powder-coat to match shelter
- Stainless steel anchors

Item 3: (Optional) SA550400 'Gen 3' Solar-powered LED Lighting System

- This lighting system is a self-contained, off-grid LED light package built specifically to **illuminate the interior of transit shelters for passenger convenience and security**
- The light system consists of (4) main elements; LED light, solar collection panel, batteries and controller.
- Roof mounted light/battery/control box
 - Rugged aluminum enclosure, mounts to underside of shelter roof
 - Contains LED/battery/controller
 - Secured to roof ribs
 - Powder-coated finish to match shelter
- (3) x 1W white high-efficiency SuperBright LED modules, 50,000 hrs life
- Solar collection panel, rigid, 50W
- (3) maintenance-free AGM batteries, 36 AH total capacity
- Controller with 9 selectable pre-set modes
- Solar light kit will be factory assembled and mounted at Daytech factory
- Performance:
 - Location: Ayer MA



Daytech Limited
70 Disco Road
Toronto, ON M9W 1L9

Tel 416. 675.1195 daytechlimited.com

Quotation 20-5354B Montachusett Regional Planning Commission / Ayer Stn / Bus shelter
Page 3

- Dusk-to-dawn illumination, all year long
- Approx 200 lumens total light output
- Estimated minimum light intensity = 30 lux measured approx 24" from ground
- Minimum (5) days autonomy under normal conditions
- **'Autonomy'** is an important criterion. It is the length of time the system will run from full charge to lights off without a charge from the solar panels.

Note: *Each kit will illuminate an area roughly 4' x 10'. We recommend (2) light kits for this large shelter.*

About solar:

For solar powered items, solar lighting is dependent on receiving direct and indirect sunlight. Obstructions (such as shaded areas, trees, buildings, snow or ice buildup) may reduce system performance. Solar collection panels are mounted on a slope. For optimal performance, we recommend solar panels face 'away from north', oriented 90° through 270° per compass, and avoid significant obstructions.

In the event of a prolonged period of unfavorable weather, solar light system may temporarily shut down. We recommend removal of snow or ice buildup within 3 days.

Freight

Shipment is FOB our factory Toronto ON. All freight costs for shipment to site are extra.

An estimated freight price for shipment to site is provided. Since freight prices are subject to frequent fluctuation, price is subject to change. Offloading by others.

Note: *it is assumed all items will ship in (1) shipment.*

Installation

Not included. By others

Daytech will provide detailed installation instructions prior to shipment.



Daytech Limited
70 Disco Road
Toronto, ON M9W 1L9

Tel 416. 675.1195 daytechlimited.com

Quotation 20-5354B Montachusett Regional Planning Commission / Ayer Stn / Bus shelter

Page 5

General Terms and Conditions

1. The following items are **not included** and shall be provided by the purchaser or others;
 - a. Design and supply of a suitable monolithic concrete pad. Recommended pad footprint to be a minimum of (shelter width + 18") x (shelter length + 18") x 6" thickness. Asphalt or brick pavers are not recommended.
 - b. Offloading
 - c. Installation. See note 2 below.
 - d. Electrical power feed, final electrical connections and power hook up (if required). We recommend electrical installation be performed by a qualified electrical contractor.
 - e. Electrical inspection, if applicable.
 - f. Interior lighting. Available as an option.
 - g. Custom paint colors or finishes
2. Daytech shelters are factory prefabricated to customer order and specification, crated and shipped in "knock down" condition, with all necessary hardware and instructions for installation on a prepared concrete pad or pavement using standard tools and equipment. The roof will be shop assembled and ship in (1) section. Lifting equipment will be required. Wall panels will be shipped in knock-down kit form.
3. Shop drawings are provided for approval within 10 days of order.
4. Paint colours, other than Daytech standard, are available at additional cost. Please specify RAL colour code.
5. Prices are firm for acceptance within (60) days and subject to adjustment thereafter.
6. Standard payment terms are: **Net 30 days from shipment.** (if ordered by a recognized government agency) Subject to credit approval.
7. **All taxes extra.** Taxes to be remitted by purchaser, if applicable.
8. Prices quoted in US dollars.
9. In the event there is a **delay** in installation exceeding (30) days after the delivery schedule is agreed upon due to reason's beyond Daytech's control (ie. site not ready, prolonged inclement weather, interference with other trades or other unforeseen issues), then Daytech will (i) invoice for the entire shelter portion of the project which will be due within (30) days, and (ii) charge for storage of product at the rate of \$500 per month or fraction thereof. The charge will apply to each shelter.
10. Liquidated damages: Daytech will not be responsible for any liquidated damages or similar charges for failure to meet delivery schedule.
11. Warranty: All Daytech products are covered by Daytech's standard 1-year warranty against manufacturing defects and workmanship. Please see attached warranty agreement.



Daytech Limited
70 Disco Road
Toronto, ON M9W 1L9

Tel 416. 675.1195 daytechlimited.com

Quotation 20-5354B Montachusett Regional Planning Commission / Ayer Stn / Bus shelter
Page 6

12. Delivery lead time is approximately **(12) to (13) weeks** after receipt of written order, deposit payment, and return of approval drawings, and is subject to confirmation at time of order. Please allow an additional (2) weeks if stamped drawings are required.

If you have any questions or concerns, please do not hesitate to contact me.

Regards,

John Duthie

VP sales and marketing

☎ 416.675.1195 x-224 | toll free 877.329.1907

Email: jduthie@daytechlimited.com

Due to Limited Raw Material Supply and High Demand—Lead Times are Estimates Only and May Fluctuate.



Your Outdoor Superstore

1-800-323-5664

M-F 8:00am - 4:30pm CT

[Home](#) | [Free Catalog](#) | [About Us](#) | [Contact Us](#) | [FAQs](#) | [Site Map](#)



QuickShip
Popular Products, Right Away

[Click Here to Enable Options](#)

Commercial Park Bench with Curved Back

SALE



Model CBPB-6CB-BK

Affordable & Stylish

Manufactured to withstand daily commercial use, this high quality imported steel bench features a back and seat made from 1-9/16" x 3/16" welded steel bars. The arms and legs are constructed from 2" x 1/2" steel, which will provide many years of outstanding service. Anchor holes are pre-drilled for optional surface mounting (Expand Anchor Bolts Included) to deter theft and prevent unwanted movement of the bench.

Dimensions: 74"L x 24.25"W x 35"H

Finished with a solid textured powder-coating finish, this fashionable bench is highly resistant to rust and corrosion. Easy four piece assembly using the included stainless steel hardware.

Matching Products

SALE



Verona Series
Recycling Receptacle

SALE



Commercial Steel
Park Bench with
Straight Back

Color Options



black
river finish



QuickShip ▶ [Enable Options](#)

▶ [Need a Park Bench Fast?](#)
▶ [Click Here to Show Models, Colors and Options](#)
that are [QuickShip Ready](#).

Due to Limited Raw Material Supply and High Demand—Lead Times are Estimates Only and May Fluctuate.



Your Outdoor Superstore

1-800-323-5664

M-F 8:00am - 4:30pm CT

[Home](#) | [Free Catalog](#) | [About Us](#) | [Contact Us](#) | [FAQs](#) | [Site Map](#)



QuickShip
Popular Products, Right Away

[Click Here to Enable Options](#)

Flare Top Trash Receptacle

SALE



Model CBTR-FT-BK

Dimensions

with Flat Top Lid - 28"Dia. x 38-1/4"H

with Rain Bonnet - 28"Dia. x 46-1/2"H

Stainless steel surface mount hardware included.



QuickShip ▶ [Enable Options](#)

- ▶ [Need a Flare Top Trash Receptacle Fast?](#)
- ▶ [Click Here to Show Models, Colors and Options that are QuickShip Ready.](#)

Simple Reliability

Flare Top Trash Receptacle, built with reliability in mind. This tough, fully-welded commercial grade steel receptacle is a one-piece design with vertical slats and two horizontal bands at the neck and base that show off its simple clean lines.

Matching Products



Commercial Steel
Park Bench with
Straight Back



Commercial Steel
Park Bench with
Curved Back

This imported 40 gallon flared top trash receptacle offers a flat lid with a pitch-in opening that conceals waste, minimize odors and encourages proper litter disposal. Never worry about losing the lid, there is a discrete security cable that is attached under the lid and then to the inside of the base. Included is a removable, steel liner, contoured to precisely fit the unit ensuring no unsightly gaps.

The all steel trash receptacle and liner are both thoroughly coated with a durable black powder-coat finish to protect against the effects of environmental conditions. This finish will inhibit rust and corrosion, promising many years of exceptional service.

▼ Item Specific Details Available on Linked Model Numbers Below



[Tweet](#)

Flare Top Trash Receptacle with Liner Flat Top Lid			Was	Special	Qty
CBTR-FT-BK	(1 to 2 Units)	Black (River Finish)	(169 lbs)	\$945.00 \$859.00	▼
CBTR-FT-BKB	(3 to 5 Units)	Black (River Finish)	(169 lbs)	\$934.00 \$849.00	▼
CBTR-FT-BKC	(6 to 9 Units)	Black (River Finish)	(169 lbs)	\$923.00 \$839.00	▼
CBTR-FT-BKD	(10+ Units)	Black (River Finish)	(169 lbs)	\$912.00 \$829.00	
Flare Top Trash Receptacle with Liner Rain Bonnet			Was	Special	Qty
CBTR-FTRB-BK	(1 to 2 Units)	Black (River Finish)	(173 lbs)	\$1,001.00 \$910.00	▼



627 Amersale Drive
Naperville, IL 60563
sales@belson.com

Toll Free: 1-800-323-5664
Phone: 1-630-897-8489
Fax: 1-630-897-0573

Model #	Description	Lbs	Quantity	Unit Price	Unit Total
CBPB-6CB-BK	6' Powder-Coated Steel Bench With Curved Back, Black (1 to 5 Units)	184	4	\$947.00	\$3,788.00
CBTR-FTRB-BKB	Powder-Coated Flare Top Trash Receptacle, With Rain Bonnet Lid, Black (3 to 5 Units)	173	3	\$900.00	\$2,700.00

Calculate Shipping

Zip Code

- ☐ Phone Call Service
- ☐ Liftgate Service

After changing quantity, please click Recalculate below

Calculate

Subtotal \$6,488.00

☐ Tax Exempt / For TBD

Resale

Shipping TBD

Grand Total TBD

Shop for More

Recalculate

Empty Cart

Get Quote

Secure Checkout