

TOWN OF AYER, MASSACHUSETTS

# KIDDIE JUNCTION PLAYGROUND IMPROVEMENTS

AYER, MASSACHUSETTS

JULY 2023

PERMIT SET

PREPARED FOR:  
**TOWN OF AYER, MA**  
1 MAIN STREET  
AYER, MA 01432



IMAGERY SOURCE: NEARMAP  
IMAGERY DATE: APRIL 2021

 PROJECT LOCATION

**LOCATION MAP**  
1" = 150'-0"

PREPARED BY:



www.BETA-Inc.com

**PLAN INDEX**

<u>SHEET NO.</u>	<u>DESCRIPTION</u>
L-1	COVER
L-2	GENERAL NOTES
L-3	EXISTING CONDITIONS PLAN
L-4	SITE PREPARATION
L-5	MATERIALS PLAN
L-5.1	PLAYGROUND EQUIPMENT
L-6	LAYOUT PLAN
L-7	GRADING PLAN
D-1 - D-3	DETAILS

**FOR REVIEW ONLY**

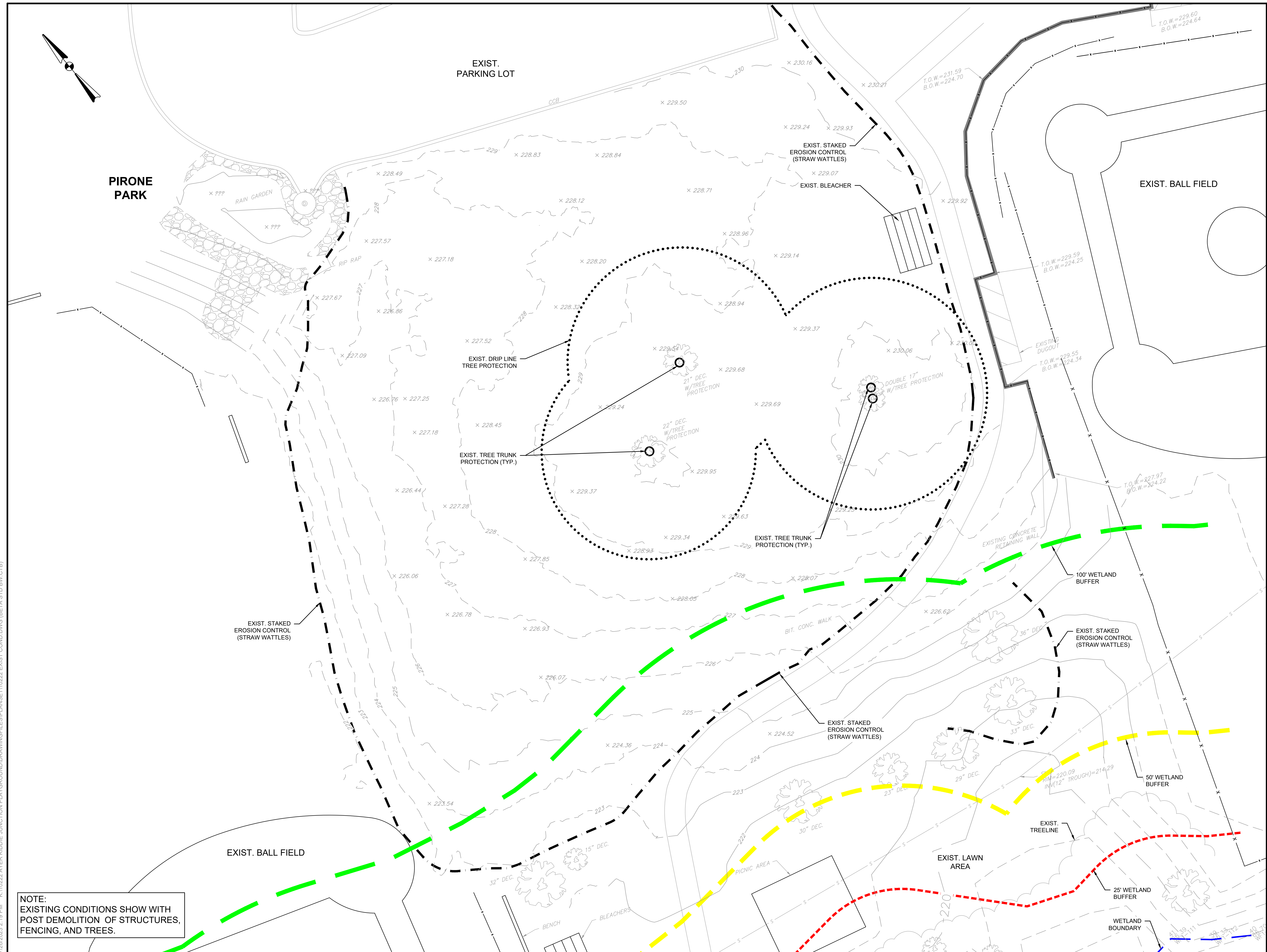


REGISTERED PROFESSIONAL  
DATE







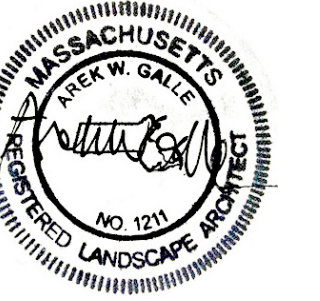


PREPARED BY 4



[www.BETA-Inc.com](http://www.BETA-Inc.com)

REGISTERED PROFESSIONAL



SUBCONSULTANT 1

PROJECT 1

## Kiddie Junction Playground Improvements

Ayer, MA

TITLE 1

## EXISTING CONDITIONS PLAN

[illegible]

NO.	REVISIONS	DATE
DRAWN BY:	CC	
DESIGNED BY:	RC	
CHECKED BY:	RC	
ISSUE DATE:	07/12/23	
BETA JOB NO.:	10222	

SCALE 1



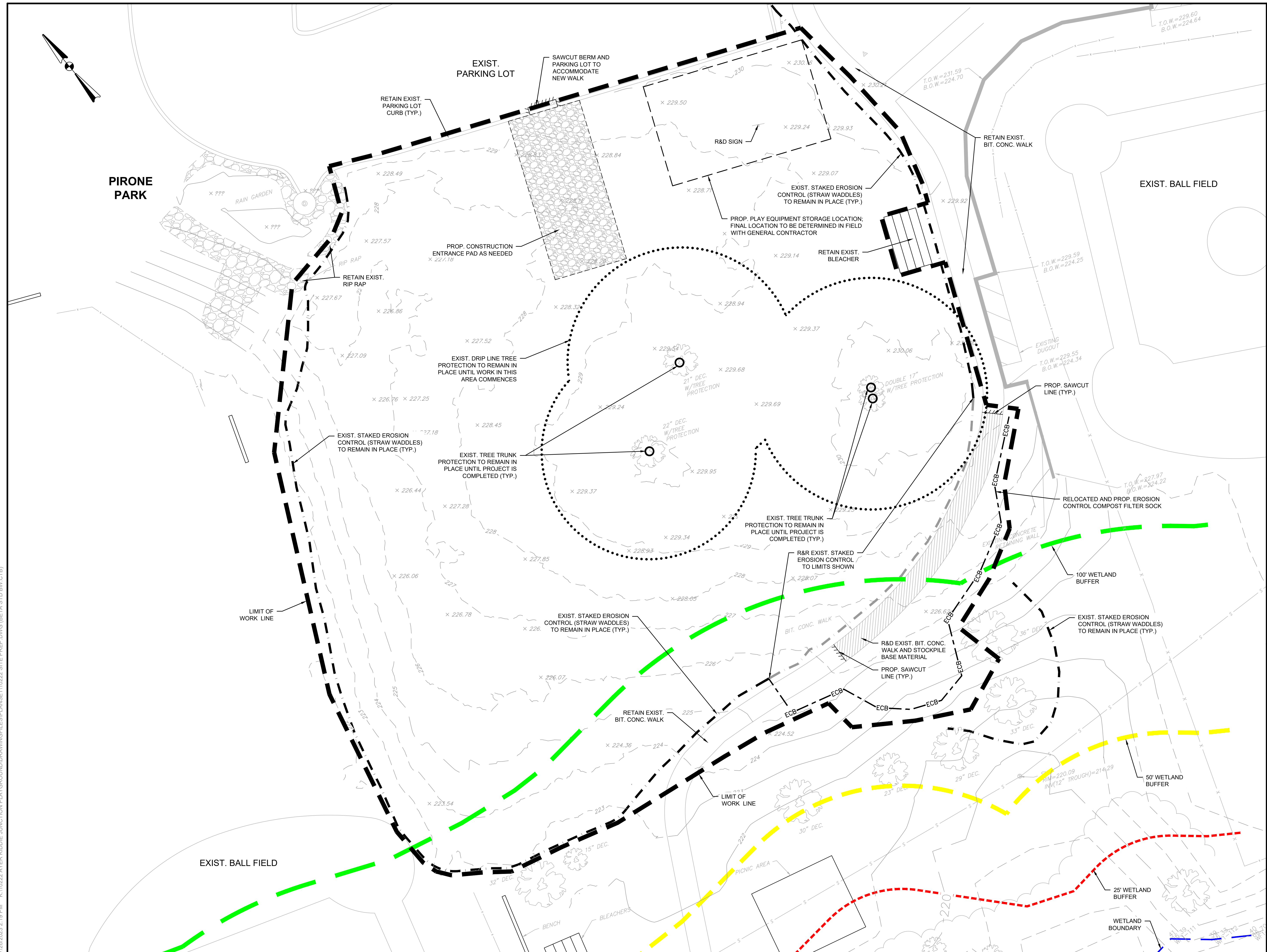
UNLESS OTHERWISE NOTED OR CHANGED BY REPRODUCTION

For Review Only

SHEET NO. 4

**L-3**



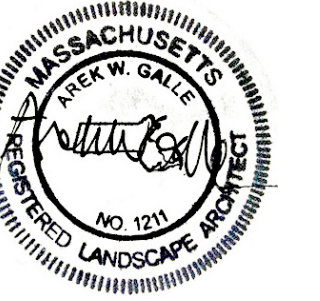


PREPARED BY 4



[www.BETA-Inc.com](http://www.BETA-Inc.com)

REGISTERED PROFESSIONAL



SUBCONSULTANT 4

PROJECT 1

## Kiddie Junction Playground Improvements

Ayer, MA

TITLE 1

## SITE PREPARATION

[illegible]

DRAWN BY:	CC
DESIGNED BY:	RC
CHECKED BY:	RC
ISSUE DATE:	07/12/23
BETA JOB NO.:	10222

SCALE 1



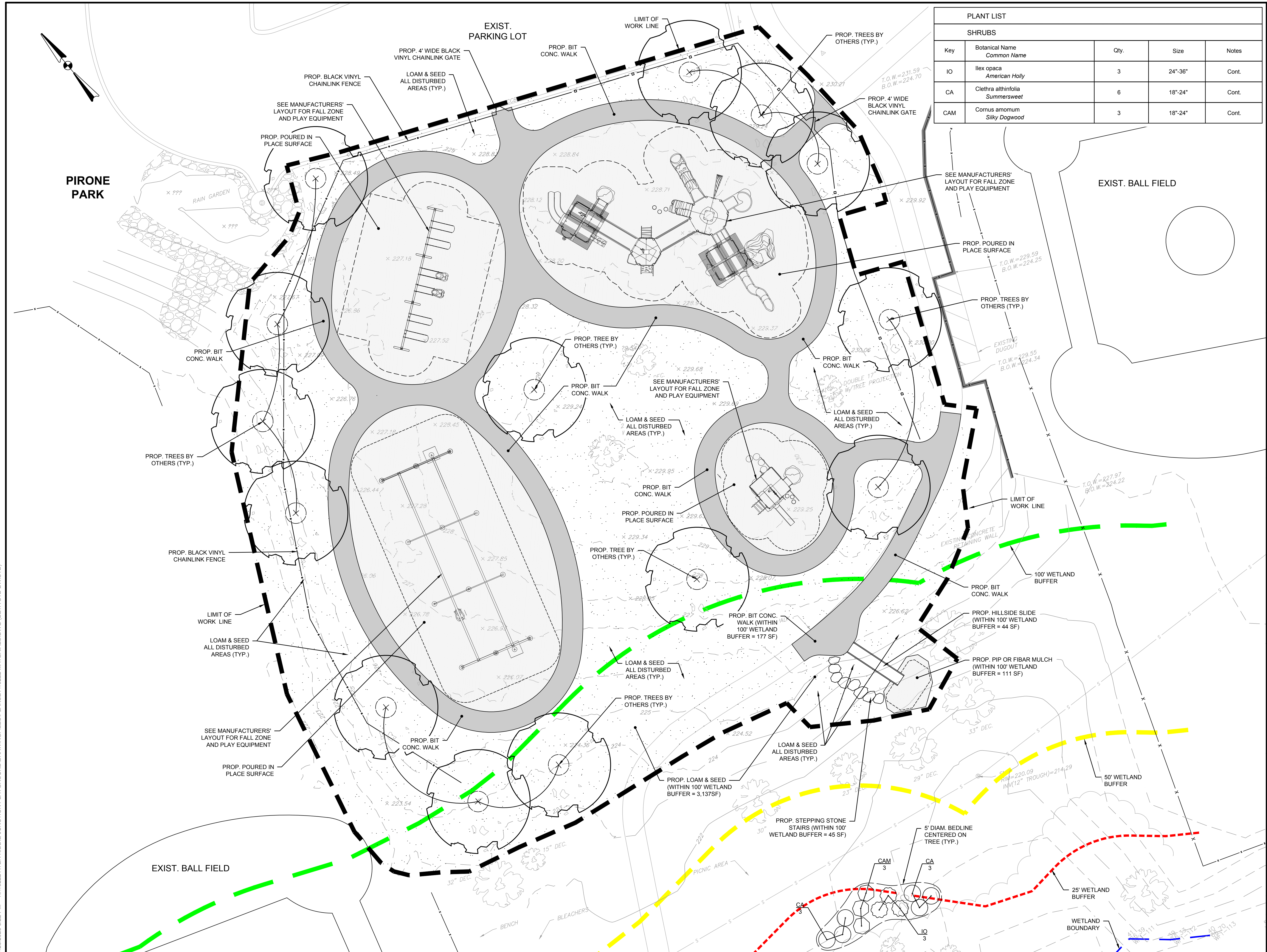
UNLESS OTHERWISE NOTED OR CHANGED BY REPRODUCTION

For Review Only

SHEET NO. 4

**-4**





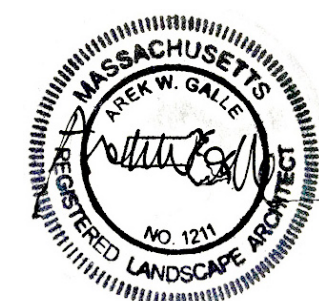
PLANT LIST				
SHRUBS				
Key	Botanical Name <i>Common Name</i>	Qty.	Size	Notes
IO	Ilex opaca <i>American Holly</i>	3	24"-36"	Cont.
CA	Clethra althifolia <i>Summersweet</i>	6	18"-24"	Cont.
CAM	Cornus amomum <i>Silky Dogwood</i>	3	18"-24"	Cont.

PREPARED BY



[www.BETA-Inc.com](http://www.BETA-Inc.com)

REGISTERED PROFESSIONAL



SUBCONSULTANT

PROJECT

# Kiddie Junction Playground Improvements

Ayer, MA

TITLE

## MATERIALS PLAN


NO.	REVISIONS	DATE
DRAWN BY:	CC	
DESIGNED BY:	RC	
CHECKED BY:	RC	
ISSUE DATE:	07/12/23	
BETA JOB NO.:	10222	

SCALE



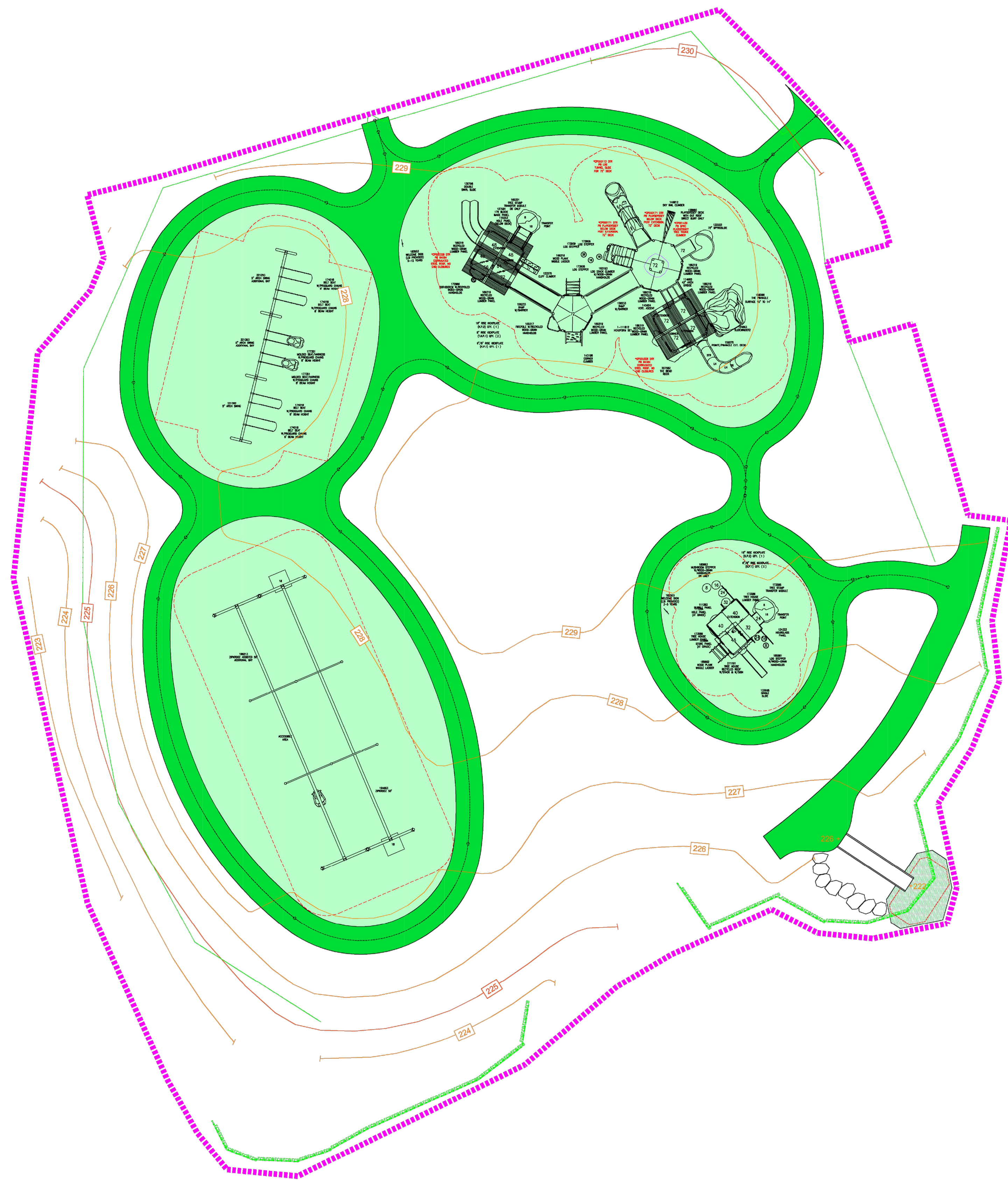
UNLESS OTHERWISE NOTED OR CHANGED BY REPRODUCTION

For Review Only

SHEET NO.

## L-5





PLAYBOOSTER/SWINGS/ZIP KROOZ

TOTAL ELEVATED PLAY COMPONENTS	16		
TOTAL ELEVATED COMPONENTS ACCESSIBLE BY RAMP	0	REQUIRED	0
TOTAL ELEVATED COMPONENTS ACCESSIBLE BY TRANSFER	16	REQUIRED	8
TOTAL ACCESSIBLE GROUND LEVEL COMPONENTS SHOWN	12	REQUIRED	5
TOTAL DIFFERENT TYPES OF GROUND LEVEL COMPONENTS	4	REQUIRED	4

PLAYSHAPER

TOTAL ELEVATED PLAY COMPONENTS	6		
TOTAL ELEVATED COMPONENTS ACCESSIBLE BY RAMP	0	REQUIRED	0
TOTAL ELEVATED COMPONENTS ACCESSIBLE BY TRANSFER	6	REQUIRED	3
TOTAL ACCESSIBLE GROUND LEVEL COMPONENTS SHOWN	2	REQUIRED	2
TOTAL DIFFERENT TYPES OF GROUND LEVEL COMPONENTS	2	REQUIRED	2

**NOTE: RECOMMENDED 6" BUFFER FOR  
SAFETY ZONES TO PERIMETER TO  
PREVENT INSTALL ERRORS.**

**landscape  
structures**



The play components identified on this plan are IPEMA certified. (Unless model number is preceded with \*) The use and layout of these components conform to the requirements of ASTM F1487. To verify product certification, visit [www.ipema.org](http://www.ipema.org)

THIS PLAY AREA & PLAY EQUIPMENT IS DESIGNED FOR AGES 2-12 YEARS UNLESS OTHERWISE NOTED ON PLAN.

IT IS THE MANUFACTURERS OPINION THAT THIS PLAY AREA DOES CONFORM TO THE A.D.A. ACCESSIBILITY STANDARDS, ASSUMING AN ACCESSIBLE PROTECTIVE SURFACING IS PROVIDED, AS INDICATED, OR WITHIN THE ENTIRE USE ZONE.

THIS CONCEPTUAL PLAN WAS BASED ON INFORMATION AVAILABLE TO U.S. PRIOR TO CONSTRUCTION. DETAILED SITE INFORMATION INCLUDING SITE DIMENSIONS, TOPOGRAPHY, EXISTING UTILITIES, SOIL CONDITIONS, AND DRAINAGE SOLUTIONS SHOULD BE OBTAINED, EVALUATED, & UTILIZED IN THE FINAL DESIGN. PLEASE VERIFY ALL DIMENSIONS OF PLAY AREA, SIZE, ORIENTATION, AND LOCATION OF ALL EXISTING UTILITIES, EQUIPMENT, AND SITE FURNISHINGS PRIOR TO ORDERING. SLIDES SHOULD NOT FACE THE HOT AFTERNOON SUN.

CHOOSE A PROTECTIVE SURFACING MATERIAL THAT HAS A CRITICAL HEIGHT VALUE TO MEET THE MAXIMUM FALL HEIGHT FOR THE EQUIPMENT (REF. ASTM F1487 STANDARD CONSUMER SAFETY PERFORMANCE SPECIFICATION FOR PLAYGROUND EQUIPMENT FOR PUBLIC USE, SECTION 8 CURRENT REVISION). THE SUBSURFACE MUST BE WELL DRAINED. IF THE SOIL DOES NOT DRAIN NATURALLY IT MUST BE TILED OR SLOPED 1/8" TO 1/4" PER FOOT TO A STORM SEWER OR A "FRENCH DRAIN".

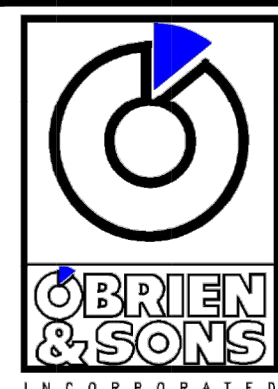
IT IS THE MANUFACTURER'S OPINION AND INTENT THAT THE LAYOUT OF THESE COMPONENTS CONFORM WITH THE U.S. CONSUMER PRODUCT SAFETY COMMISSION'S (CPSC) "HANDBOOK FOR PUBLIC PLAYGROUND SAFETY".

DESIGNED BY:

JRA

COPYRIGHT: 7.13.2023  
LANDSCAPE STRUCTURES, INC.  
601 7th STREET SOUTH - P.O. BOX 198  
DELANO, MINNESOTA 55328  
PH: 1-800-328-0035 FAX: 1-763-972-6091

Date	Previous Drawing #	Initials



KIDDIE JUNCTION PLAYGROUND

AYER, MA

M.E. O'BRIEN &  
SONS, INC.  
COLIN BOUTIN

SYSTEM TYPE:  
PB/PS/IND

DRAWING #:  
ME023656







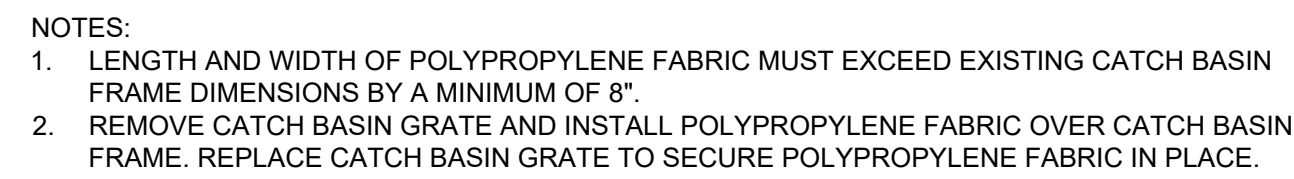






[illegible]

NO.	REVISIONS	DATE
DRAWN BY:	CC	
DESIGNED BY:	RC	
CHECKED BY:	RC	
ISSUE DATE:	07/12/23	
BETA JOB NO.:	10222	



A perspective diagram of a rectangular stone-filled trench. The top surface is labeled "ROAD". The length of the trench is indicated as "25'". The depth of the trench is indicated as "5' MIN.". The bottom surface is labeled "WIDTH AS REQUIRED". The interior of the trench is filled with a pattern representing "1 1/2\" CRUSHED STONE". A horizontal line within the stone fill is labeled "GEOGRID".

Diagram illustrating the installation of a snow fence around a deciduous tree. The fence is constructed from standard steel posts, 6' O.C. (On Center), with a 12" clearance around the tree. The fence is labeled "EX. GRADE" and "SNOW FENCE". The tree is labeled "DECIDUOUS TREE". The fence height is indicated as 2' (MIN.).

Diagram illustrating the installation of a snow fence around evergreen trees. The fence is constructed from standard steel posts (6' O.C.) and is labeled "12" CLEARANCE AROUND EVERGREEN TREES". The fence is shown in cross-section, with the posts labeled "6' STANDARD STEEL POST, 6' O.C.". The ground level is marked "EX. GRADE". The fence height is indicated as "2' (MIN.)". The trees are labeled "EVERGREEN TREE".

SINGLE STRAND 9 GAUGE WIRE OR 1/2" STRAPPING

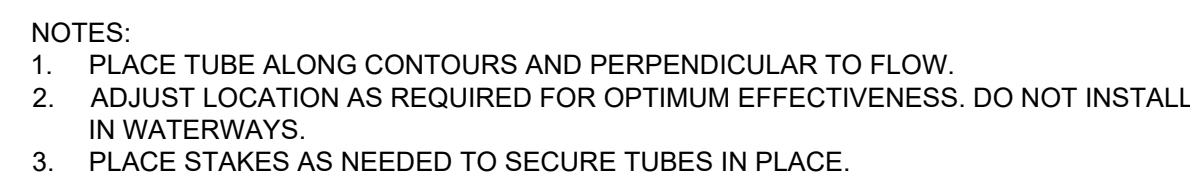
WOOD FRAMING 2"x2" TO 2"x6" NOMINAL LUMBER

4" MAX.

9'

EX. GRADE

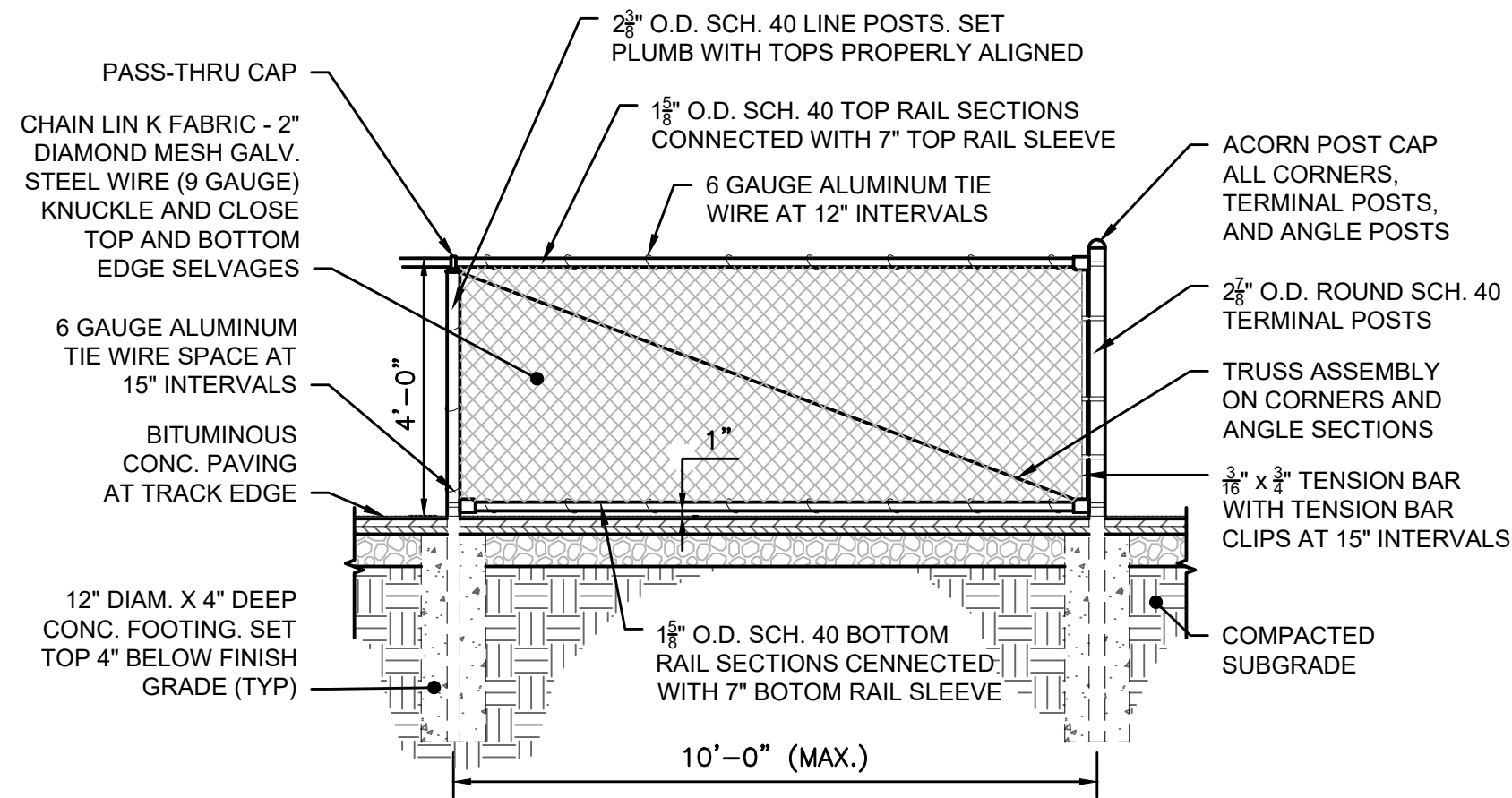
NOTE: THIS DETAIL SHOULD BE USED TO PROTECT THE TREE'S TRUNK IN SITUATIONS WHERE CONSTRUCTION IS IN CLOSE PROXIMITY.



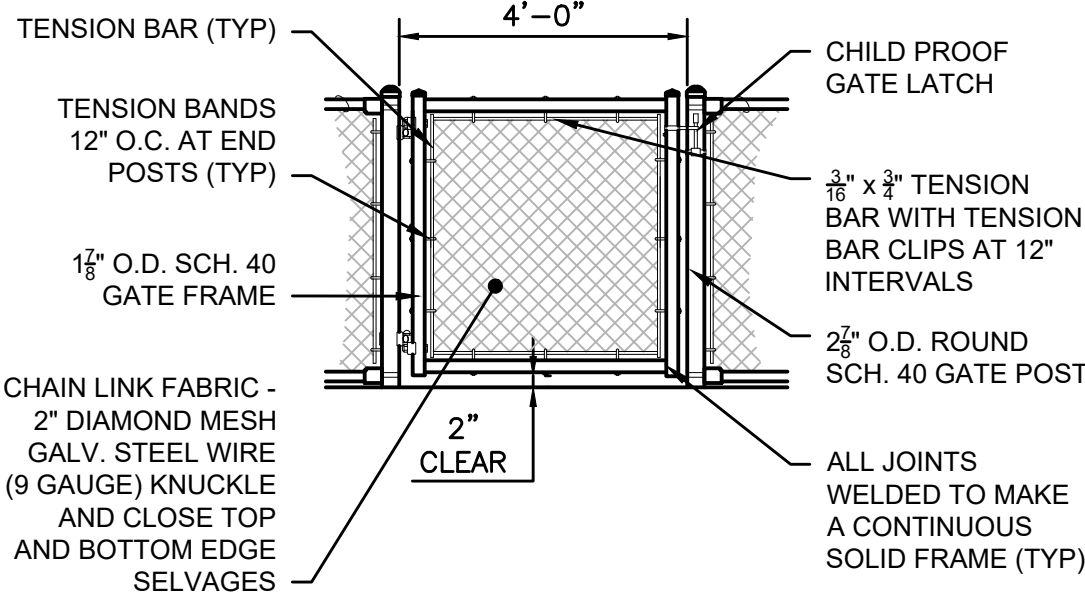
**EROSION CONTROL - COMPOST FILTER TUBE**  
NOT TO SCALE



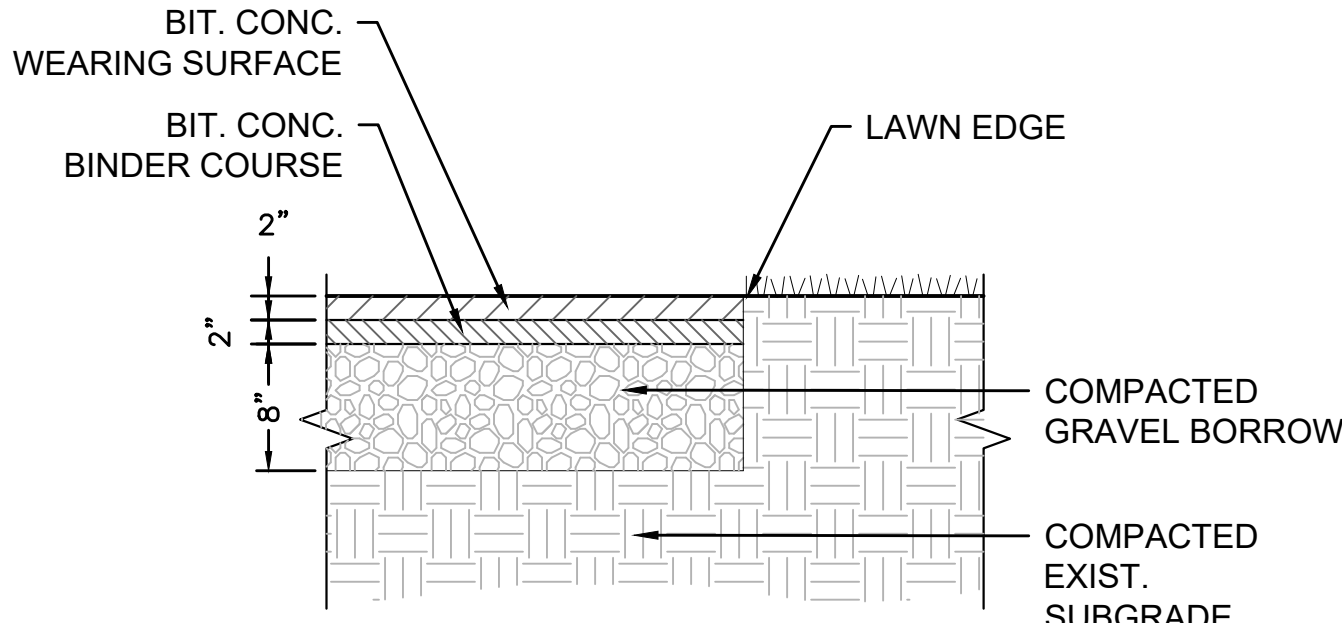
7/26/2023 2:22 PM K:\10222 AYER KIDDIE JUNCTION PLAYGROUND\DRAWINGFILES\PLANSET\10222 DETAILS.DWG (BETA STD BW.CTB)



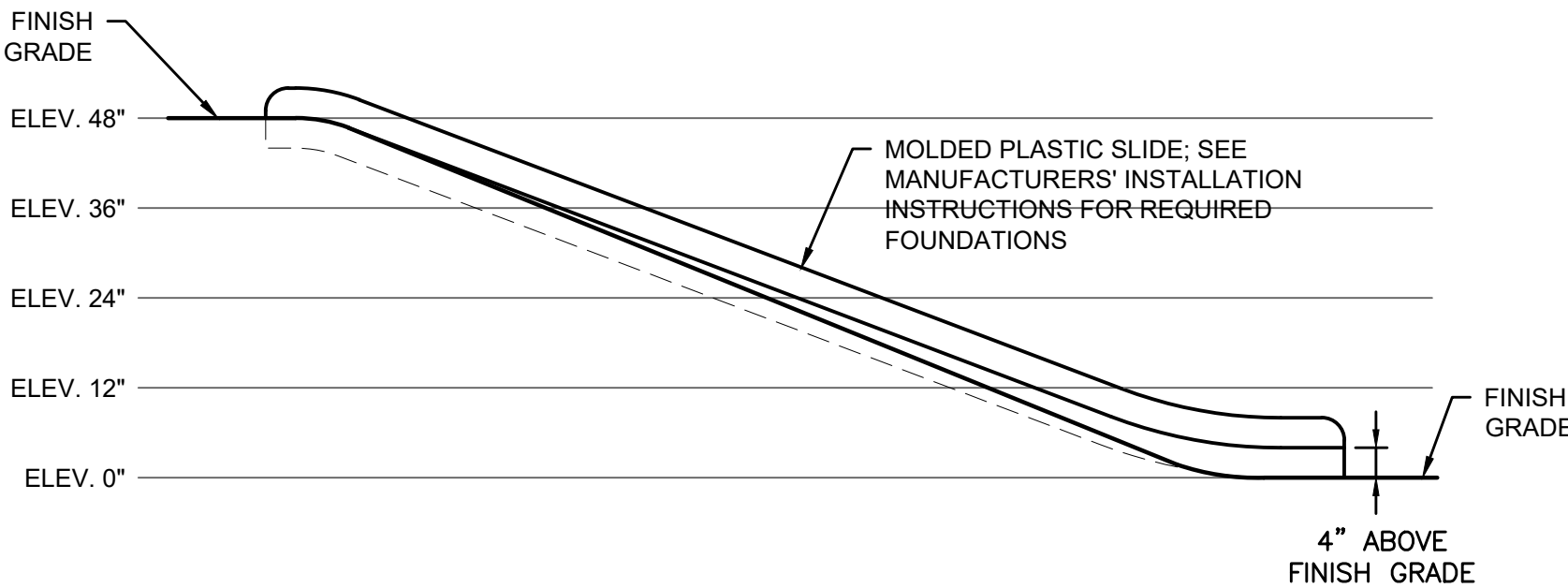
4' HIGH BLACK VINYL CHAIN LINK FENCE  
SCALE: 3/8"=1'



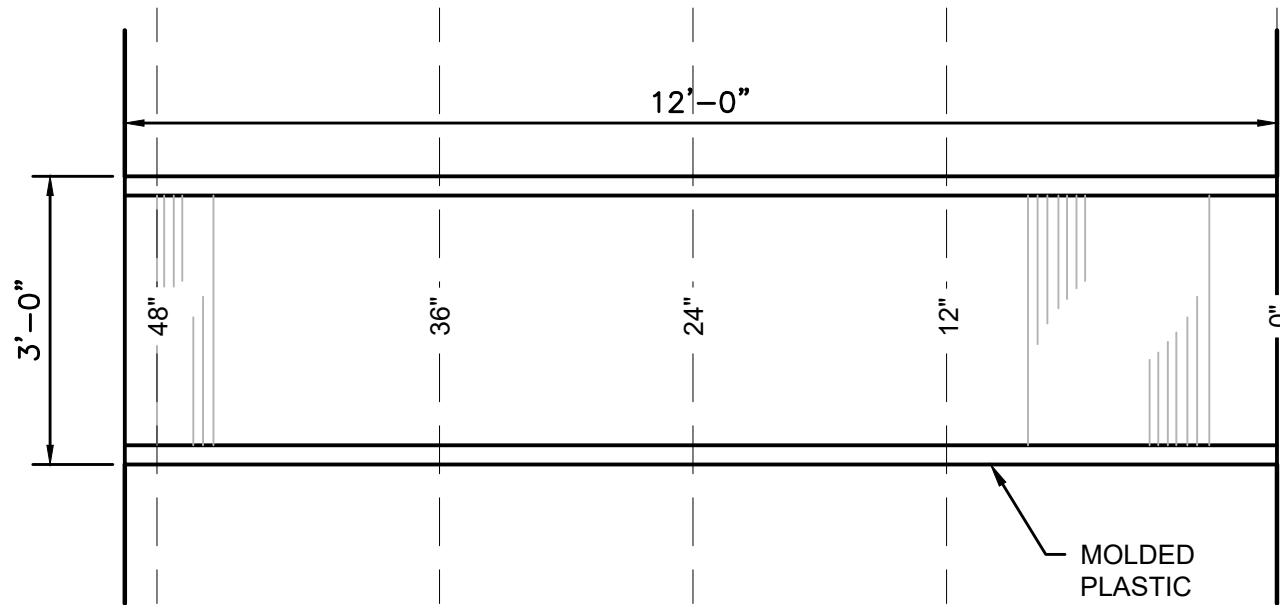
GATE ELEVATION



BITUMINOUS ASPHALT PATHWAY  
SCALE: 1"=1'-0"

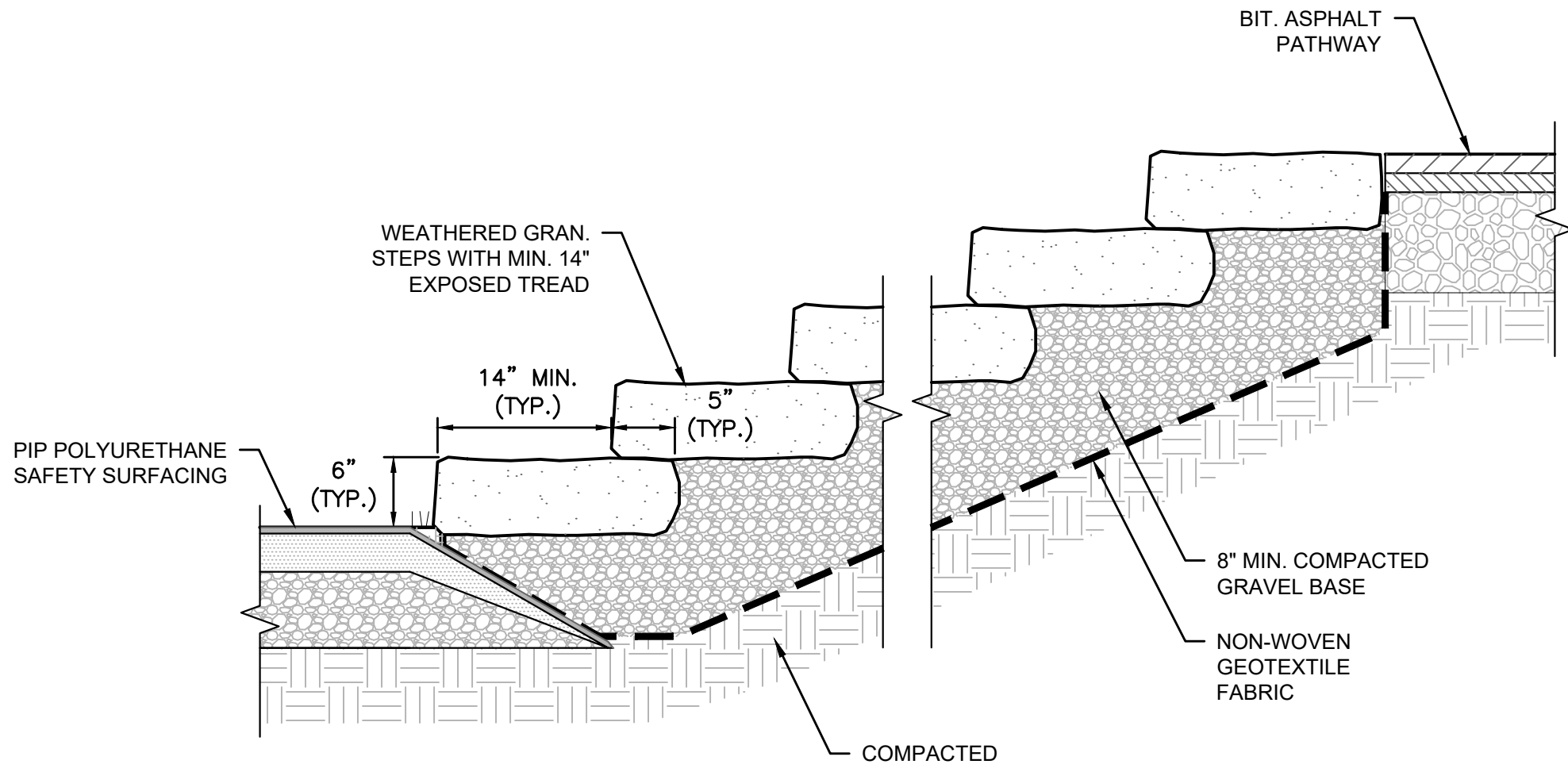


ELEVATION

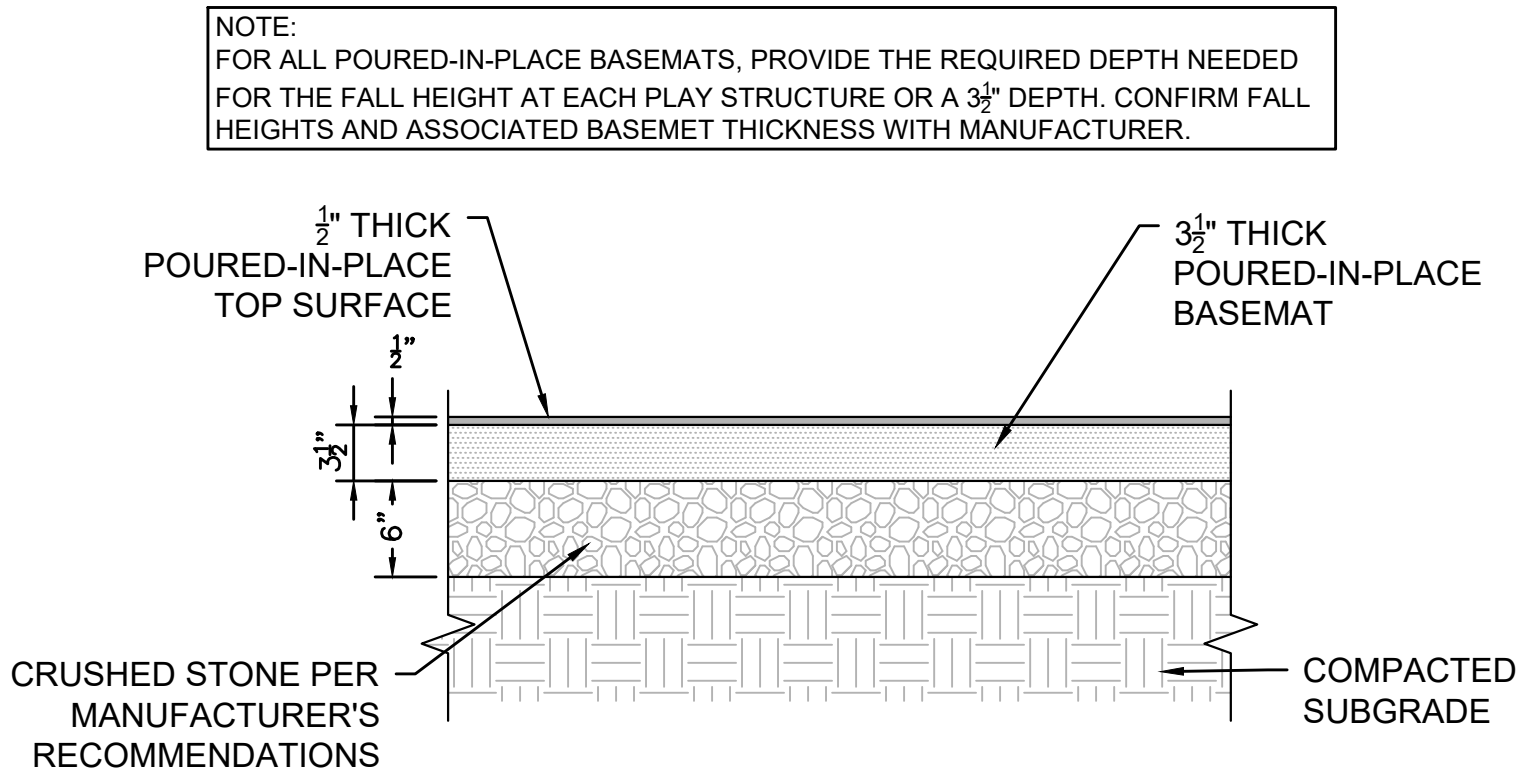


PLAN VIEW

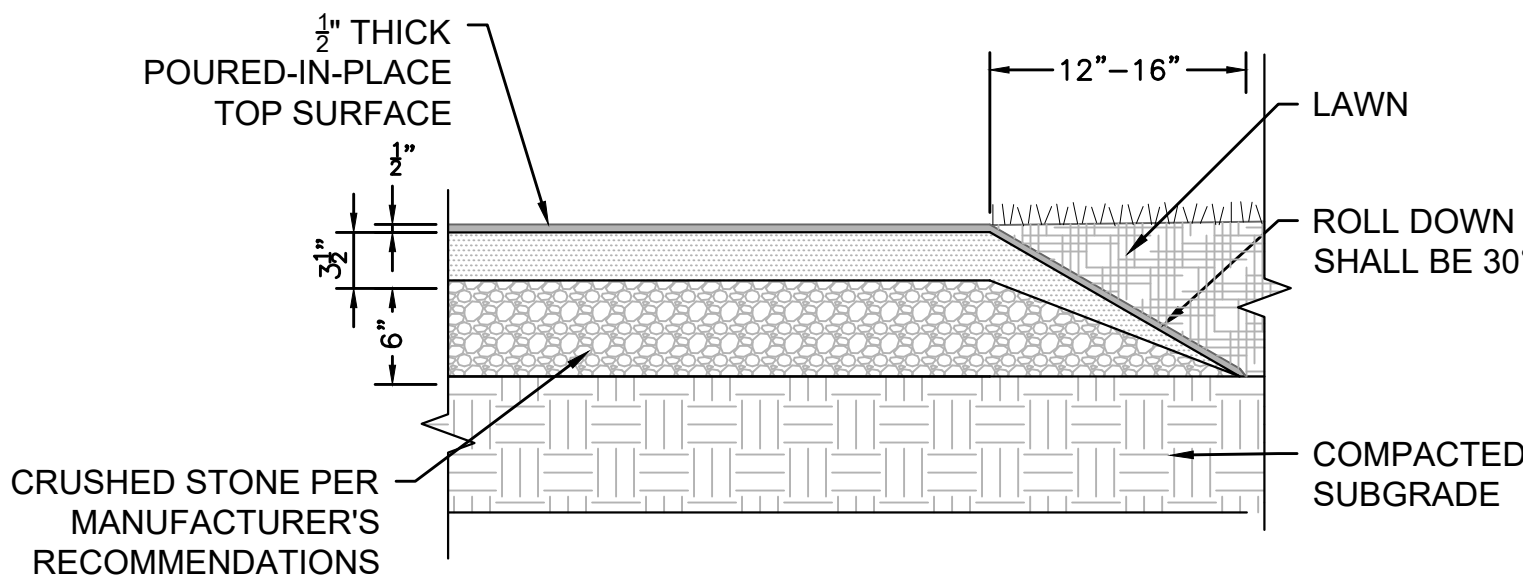
HILLSIDE SLIDE  
SCALE: 1/2"=1'-0"



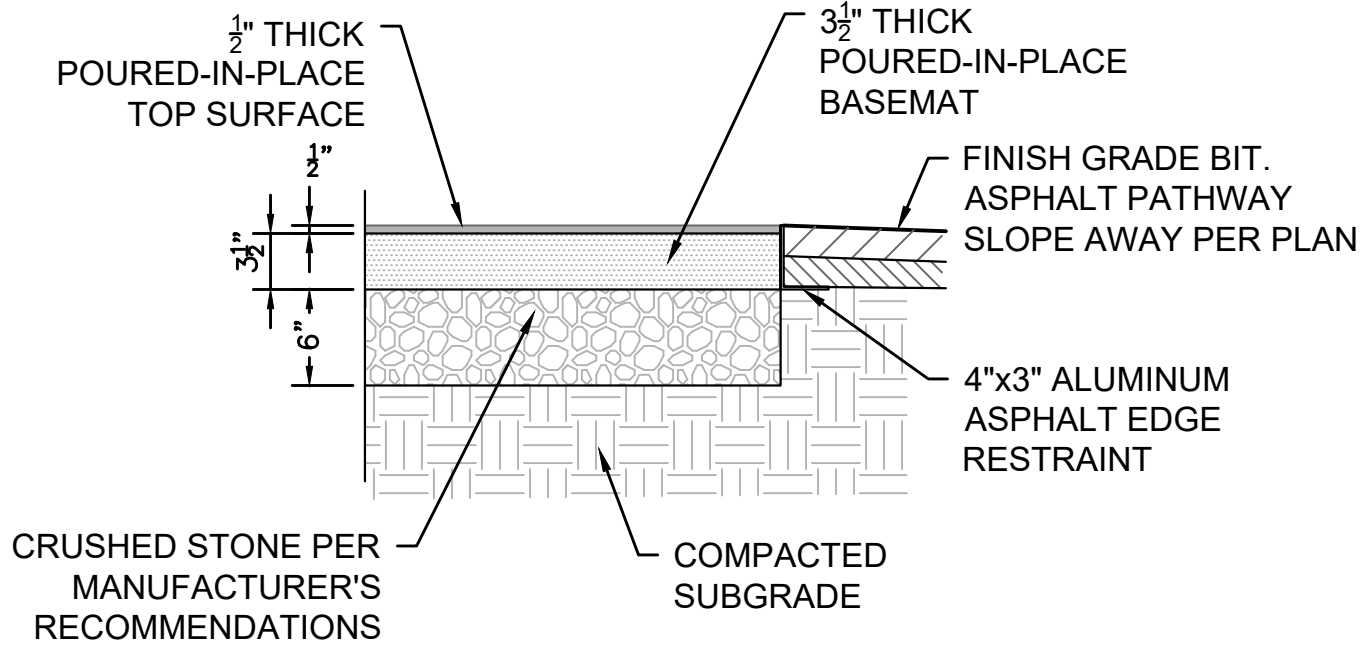
STEPPING STONE STAIRS  
SCALE: 1"=1'-0"



PIP POLYURETHANE SAFETY SURFACING  
SCALE: 1"=1'-0"



PIP POLYURETHANE SAFETY SURFACING WITHOUT CURB  
SCALE: 1"=1'-0"

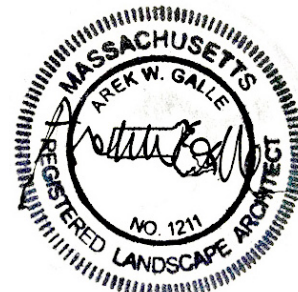


PIP POLYURETHANE SAFETY SURFACING  
AT STEEL EDGE  
SCALE: 1"=1'-0"

PREPARED BY



REGISTERED PROFESSIONAL



SUBCONSULTANT

PROJECT

Kiddie Junction  
Playground  
Improvements

Ayer, MA

TITLE

DETAILS

NO.	REVISIONS	DATE
-----	-----------	------

DRAWN BY: CC

DESIGNED BY: RC

CHECKED BY: RC

ISSUE DATE: 07/12/23

BETA JOB NO.: 10222

SCALE

AS SHOWN

For Review Only

SHEET NO.

D-2



## DETAILS

[illegible]

DRAWN BY:	CC
DESIGNED BY:	RC
CHECKED BY:	RC
ISSUE DATE:	07/12/23
BETA JOB NO.:	10222

## D-3

