



# MUNICIPAL VULNERABILITY PREPAREDNESS (MVP) PLANNING

## CORE TEAM MEETING

October 8, 2019





# Agenda!

**Health & Safety Moment**

**Introductions & Overview of MVP Program**

**Planning Grant Tasks & Core Team Responsibilities**

**Extended Scope Items**

**Maintaining MVP Designation**

**Next Steps**

# Health & Safety Moment Flu Prevention



Flu season occurs in fall through winter, peak flu sickness occurring in November

Get your flu shot NOW!

Common symptoms include fever, headache, dry cough, nausea

If you don't feel well, STAY HOME!

Contagious 1 day before symptoms and up to 1 week after



## How to Stay Healthy:

- Get an annual flu vaccine.
- Wash your hands frequently with soap and water AND use hand sanitizer.
- Disinfect workspaces and surfaces around you that may be contaminated.
- Ensure that your workplace has an adequate supply of tissues, soap, paper towels, alcohol-based hand rubs, and disposable wipes.

From CDC.gov, NSC.org

# Core Team Introductions

Who are you and what is your role in the Community?



# Steps to Resilience





# Current Town Planning Efforts

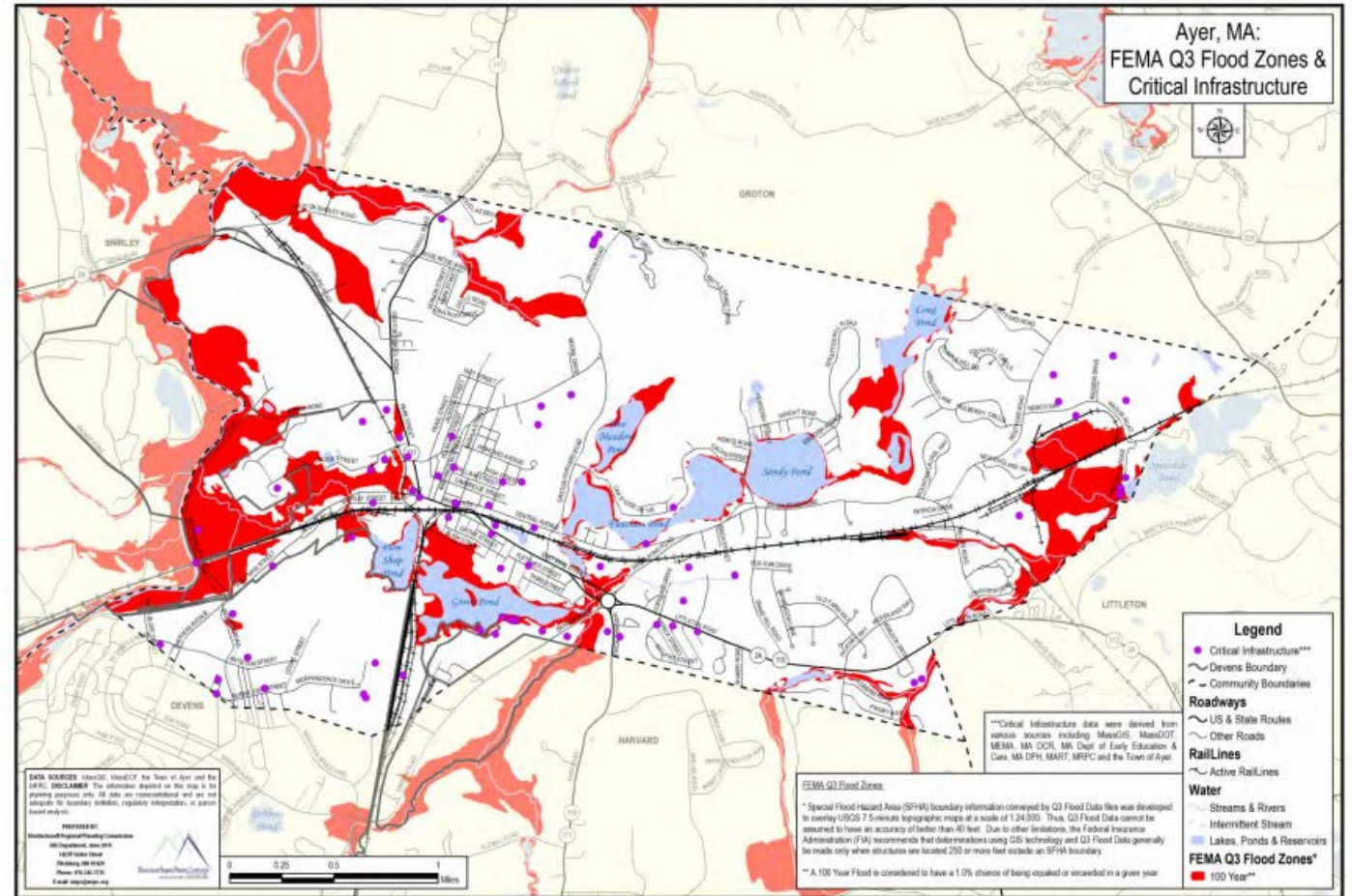
Hazard  
Mitigation Plan

Comprehensive  
Emergency  
Management  
Plan

Water Supply

Joint Emergency  
Preparedness  
Committee

Emergency  
Planning Tools  
for Residents



**Now: MA Municipal Vulnerability Preparedness (MVP) Program**

# MA Municipal Vulnerability Preparedness Program

MA Executive Order 569 (September 2016)

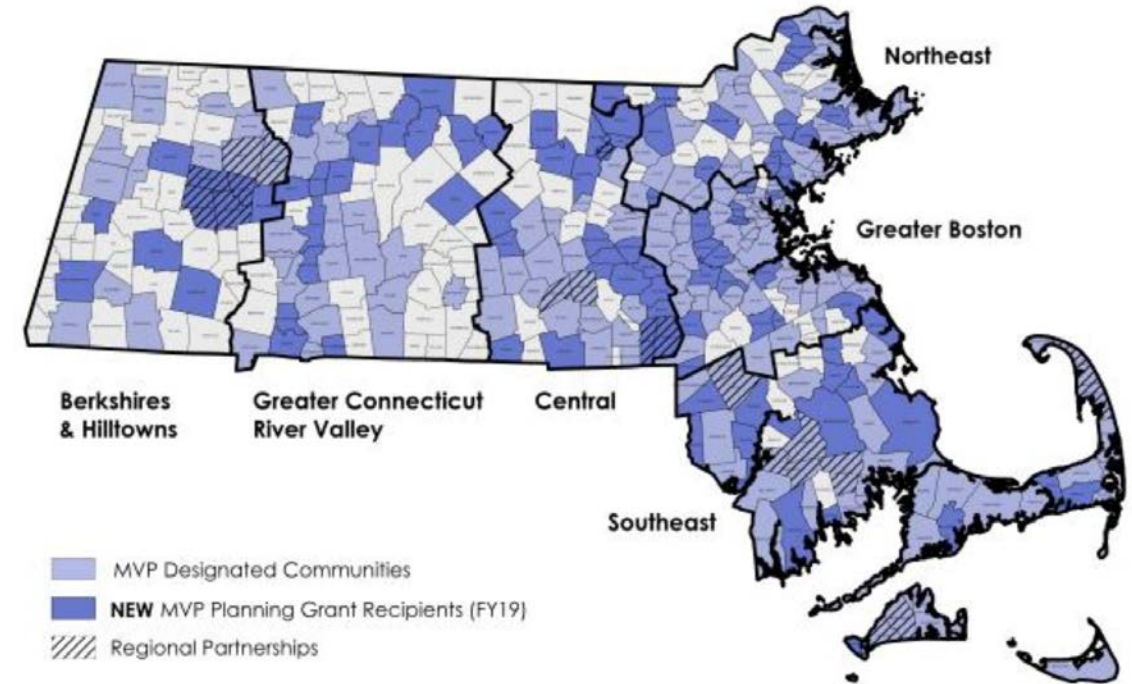
Technical Support & funding for MA municipalities

- Vulnerability Assessment
- Community Engagement
- Actionable Resiliency Plans

Grant Opportunities

- **MVP Planning Grant:** complete vulnerability assessment, community involvement requirements, final report – receive MVP designation
- **MVP Action Grant:** Must have MVP designation. For communities to implement priority climate adaptation actions identified through MVP process.

Municipal Vulnerability Preparedness (MVP) Program



Source: Massachusetts Municipal Vulnerability Preparedness (MVP) Program Information Page:  
<https://www.mass.gov/service-details/mvp-program-information>

Updated 09-23-2019

*State & Local Partnership to build resilience to climate change*

# MVP Planning Process



## MVP Principles

- **Community-led process** that employs local knowledge & requires local support
- **Accessible**
- **Utilizes partnerships** and leverages existing efforts
- **Mainstreams** climate change
- See communities as **local innovators**
- Frames **coordinated state efforts**



# Town Staff / Core Team Role

---

Selecting and contracting **Vendor**

---

Establish a **Core Team**

---

Identify and complete **Outreach to Critical Stakeholders, Partners, and Town Officials** for workshops

---

**Workshop Coordination:** Schedule, coordinate, send invitations, conduct significant outreach in the community, attend meetings and workshops

---

Help **coordinate Staff Interviews** with key experts

---

Help the MVP provider find **Relevant Data and other Relevant Info**

---

With MVP Provider, complete and send **3 Progress Reports** with info on spending and a **Final Report**

---

With consultant support as budget allows, complete **1 Public Listening Session**

---

Continue **Municipal Outreach and Engagement**, using the completed plan to inform existing planning and project activities

---

**Ayer has been awarded an expanded Scope of Work which the Core Team will also support.**

# MVP Provider Role

---

**Meet with Municipal Project Manager** to set out project scope, timeline, and compile a list of data needs; help with stakeholder mapping; set schedule for workshops, etc.

---

**Meet with Community Core Team** to help plan for workshop and collect information

---

**Conduct Interviews** with key municipal staff

---

**Prepare Materials for Workshop** including: basemaps of towns with critical layers, town climate change data and potential impacts, planning documents, town information about hazards, and risk matrix

---

**Serve as Lead Facilitator** during workshop and bring facilitators to assist as table facilitator. Adequate facilitation is key!

---

**Designate Town leads** to be scribes at each table

---

**Document all workshop outcomes and prepare a final risk matrix and summary reports**

---

**Work with town to submit all materials to the Commonwealth**

---

**Ayer has been awarded an extended Scope of Work – the Provider will also support.**

# Goal Setting

## 1. New / Existing Plans?

- Will the Workshop start a new conversation and identify next steps?
- Will the workshop help to augment other specific planning needs?

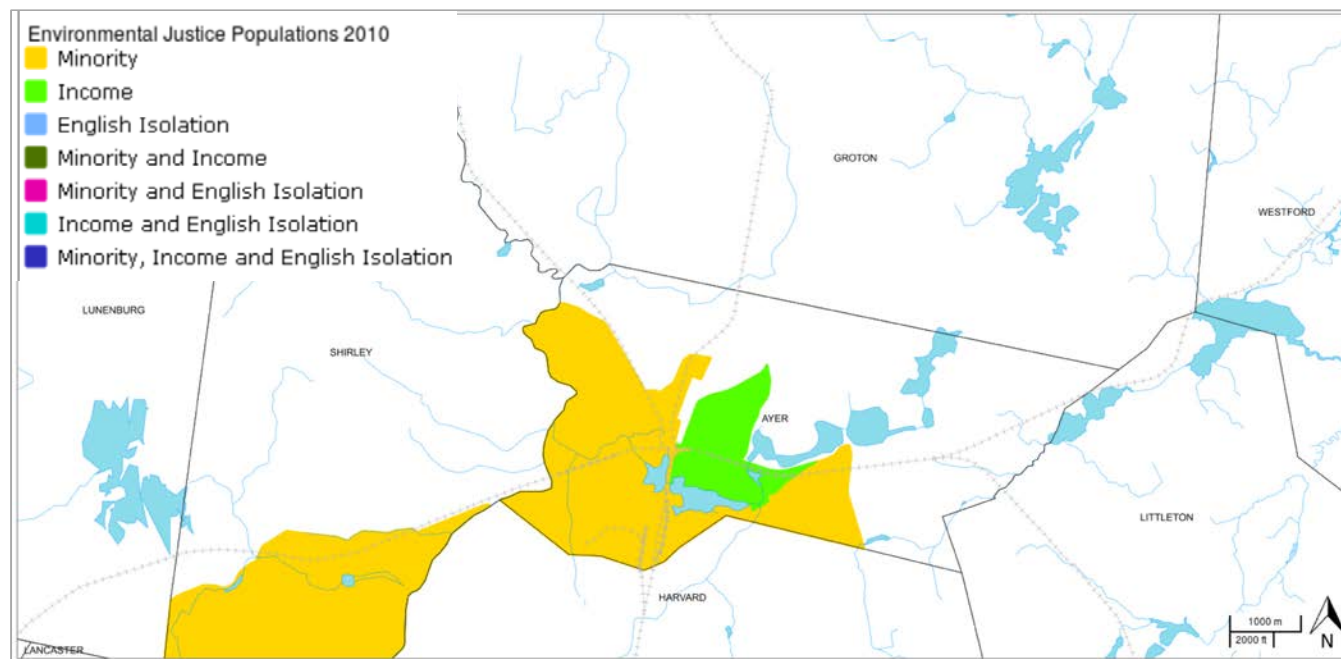
## 2. Focus?

- Community-wide?
- Specific areas?

## 3. Your goals?



# Vulnerable Populations



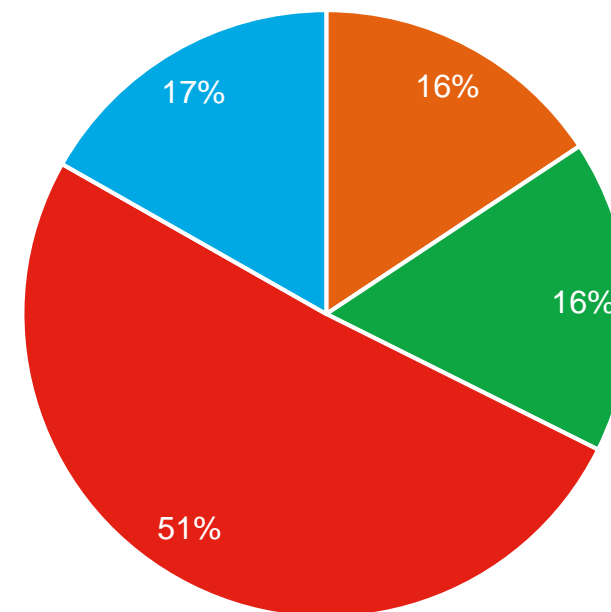
*In Massachusetts a community is identified as an Environmental Justice community if any of the following are true:*

- Median household income at or below 65 percent of the statewide median income
- 25% or more of the residents identify as a race other than white; or
- 25% or more of households have no one over the age of 14 who speaks English only or very well - English Isolation

Source: <https://www.mass.gov/info-details/environmental-justice-communities-in-massachusetts>

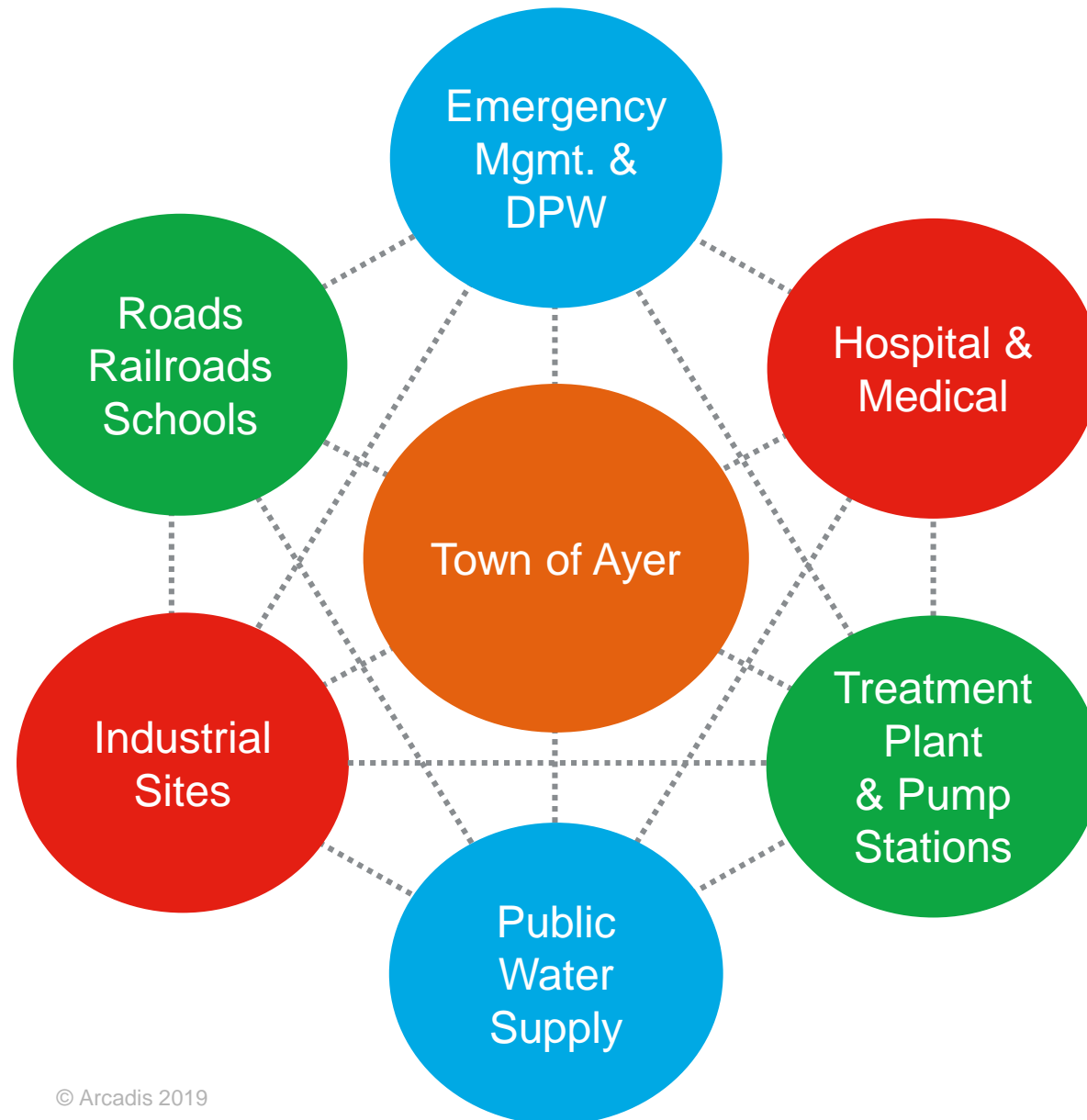
Ayer Population by Age

0-19 20-34 35-64 65+



Source: U.S. Census, American Community Survey, 5- year estimates, 2013-2017

# Critical Facilities





# Who are the Stakeholders?

People impacted by hazards in the past & likely to be impacted in the future?

People who influence, guide, and/or have the authority to make decisions?

Key Community / Business Community Members?



## Public Safety, Transportation & Utilities

- Emergency Planning
- State / Local floodplain manager or NFIP Coordinator
- Hazard Mitigation Planners
- Highway planning/maintenance
- Local transit authorities
- Public & Private Utilities

## Community & Economic Development

- Chamber of Commerce
- Local community development and economic development officials
- Developers/Builders & Realtors Associations
- Engineering/Architect Associations
- Nonprofit community development organizations
- Major business interests
- Nonprofit education and education advocacy groups
- Land conservation organizations

## Town Departments & Boards

- Town Manager's Office
- Community & Economic Development
- Building Department
- Council on Aging
- Public Works
- Emergency Management
- Parks & Recreation
- Schools
- Public Housing Authority
- Finance
- Conservation Commission
- Board of Health
- Historical Commission
- Pond & Dam Management
- Zoning
- Master Plan & Capital Planning
- Green Community

# Stakeholders



# Workshop Materials

Existing Maps and Hazard Mitigation  
Plans

Photos and Historical Information

Damage Assessments and Claims

People's Stories

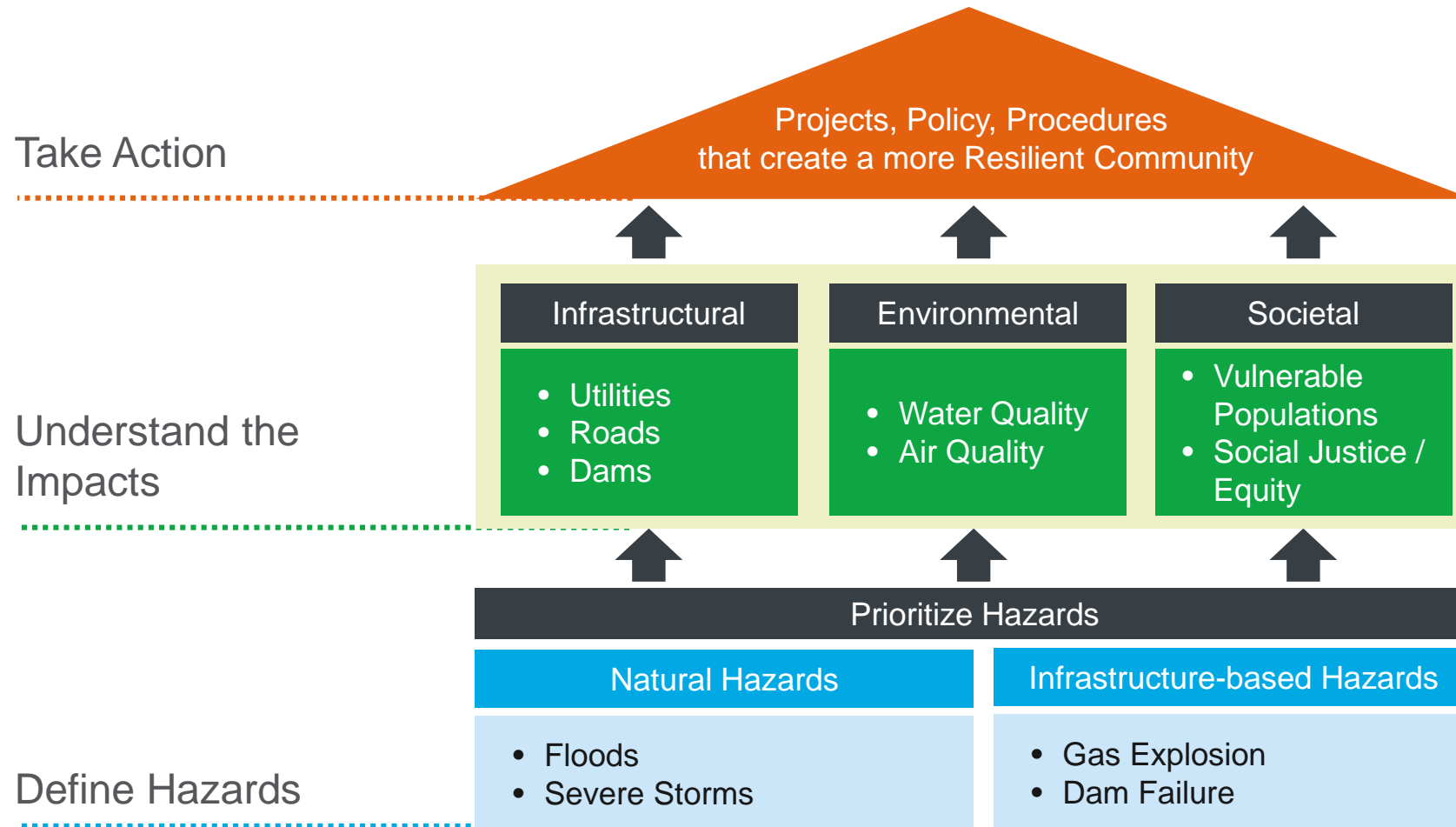


## MA Municipal Vulnerability Preparedness Program

# CRB Workshops / Matrix

Community Resilience Building Risk Matrix				www.CommunityResilienceBuilding.org					
				Top Priority Hazards (tornado, floods, wildfire, hurricanes, earthquake, drought, sea level rise, heat wave, etc.)					
<b>H-M-L</b> priority for action over the <b>S</b> hort or <b>L</b> ong term (and <b>Q</b> ngoing) <b>V</b> = Vulnerability <b>S</b> = Strength								Priority	Time
								H - M - L	Short Long Qngoing
Features	Location	Ownership	V or S						
<b>Infrastructural</b>									
<b>Societal</b>									
<b>Environmental</b>									

# Hazard and Impact Types





# Natural Hazards

Flooding

Hurricanes/Tropical Storms

Nor'easters

Severe Winter Storms

Tornadoes

Wildfires

Drought

Extreme Temperatures

Earthquakes

Landslide

**Ayer Natural Hazard Matrix**

Natural Hazard	Likelihood of Occurrence	Location	Impacts	Hazard Index
Natural Hazard Separated by Flood, Atmospheric Related and Winter Related, Other Natural Hazards, and Geologic Hazards	3 = Highly Likely 2 = Possible 1 = Unlikely	3 = Regional/State 2 = Multi Community/Regional 1 = Local/Town	4 = Catastrophic 3 = Critical 2 = Limited 1 = Negligible	Ranking Determined by Combining the Likelihood, Location and Impacts of a Natural Hazard
<b>Flood-Related Hazards</b>				
• Heavy Rain	2	1	2	5
• Snow Melt	1	1	1	3
• Dam Failure	2	2	3	7
• Ice Jams	1	2	3	6
• Beavers	3	1	2	6
<b>Atmospheric Related and Winter Related Hazards</b>				
• High Winds	2	2	3	7
• Hurricanes	1	3	3	7
• Tornadoes	1	2	3	6
• Nor'easters	2	3	2	7
• Severe Thunderstorms	2	1	2	5
• Heavy Snow	3	2	3	8
• Ice Storms	2	2	3	7
• Blizzard	1	2	3	6
<b>Other Natural Hazards</b>				
• Major Urban Fires	1	1	3	5
• Wildland Fire	3	1	2	6
• Drought	1	3	2	6
• Extreme Temperatures	1	3	2	6
<b>Geologic Hazards</b>				
• Earthquakes	1	2	2	5
• Landslides	1	1	1	3
• Tsunami	NA	NA	NA	NA

**Key**

Highly likely:	90 to 100 percent probability of occurrence in the next year or a recurrence interval of less than 1 year.
Possible :	10 to 90 percent probability of occurrence in the next year or a recurrence interval of 1 to 10 years.
Unlikely:	Less than 10 percent probability of occurrence in the next year or a recurrence interval of greater than 11 years.
Catastrophic:	Immediate onset or extended duration of event, resulting in catastrophic damage and uninhabitable conditions.
Critical:	Fast speed of onset or long duration of event resulting in devastating damage and loss of services for weeks or months.
Limited:	Moderate speed of onset or moderate duration of event, resulting in some damage.
Negligible:	Slow speed of onset or short duration of event resulting in little to no damage.

# Infrastructure Concerns

Dam Failure

Fire

Loss of Power

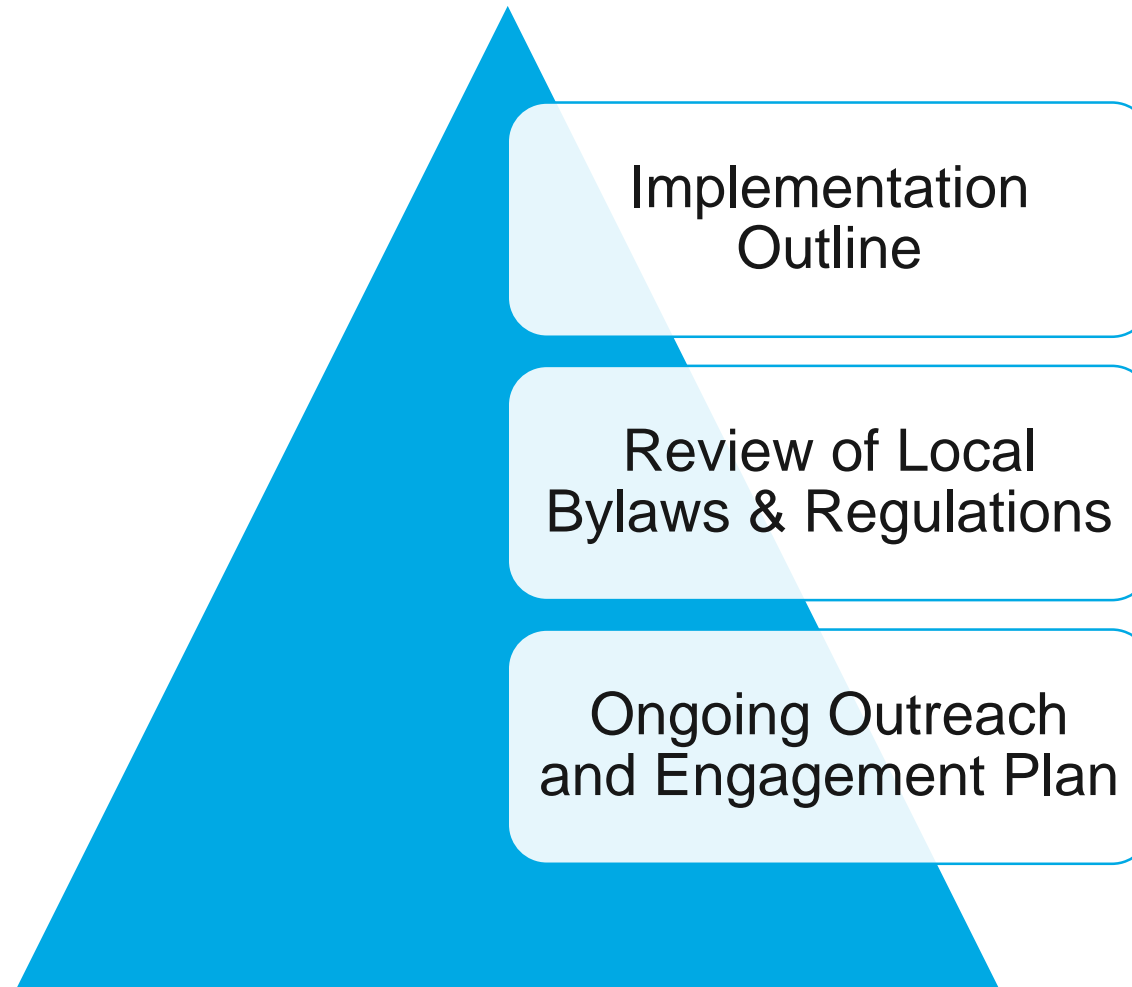
Gas Explosion

Water Contamination

Water Main Break



# Expanded Scope



# Maintaining MVP Designation

Annual Progress Report to Commonwealth detailing steps taken toward implementing the plan. Steps may include:

Applying for  
grant funding,  
such as MVP  
Action Grants

Right-sizing  
culverts

Updating existing  
plans using the  
outcomes of the  
workshop



# Next Steps

## Workshop Planning/Logistics

- 2 Workshops (4 hours each) or 1 Workshop (8 hours)?
- Date, Time of Day, Place
- Materials

## Stakeholder Outreach

- “Save the Date” approximately 6 weeks ahead of meeting
- Secure participants
- Outreach Materials





# THANK YOU

Kathryn B. Edwards, PE  
Senior Engineer  
Kate.Edwards@arcadis.com

Seth MacDonald, EIT  
Water Engineer  
Seth.MacDonald@arcadis.com

Arcadis U.S., Inc.  
500 Edgewater Drive, Suite 511  
Wakefield, MA 01880

Trevor Johnson, AICP  
Resiliency Planner  
Trevor.Johnson@arcadis.com