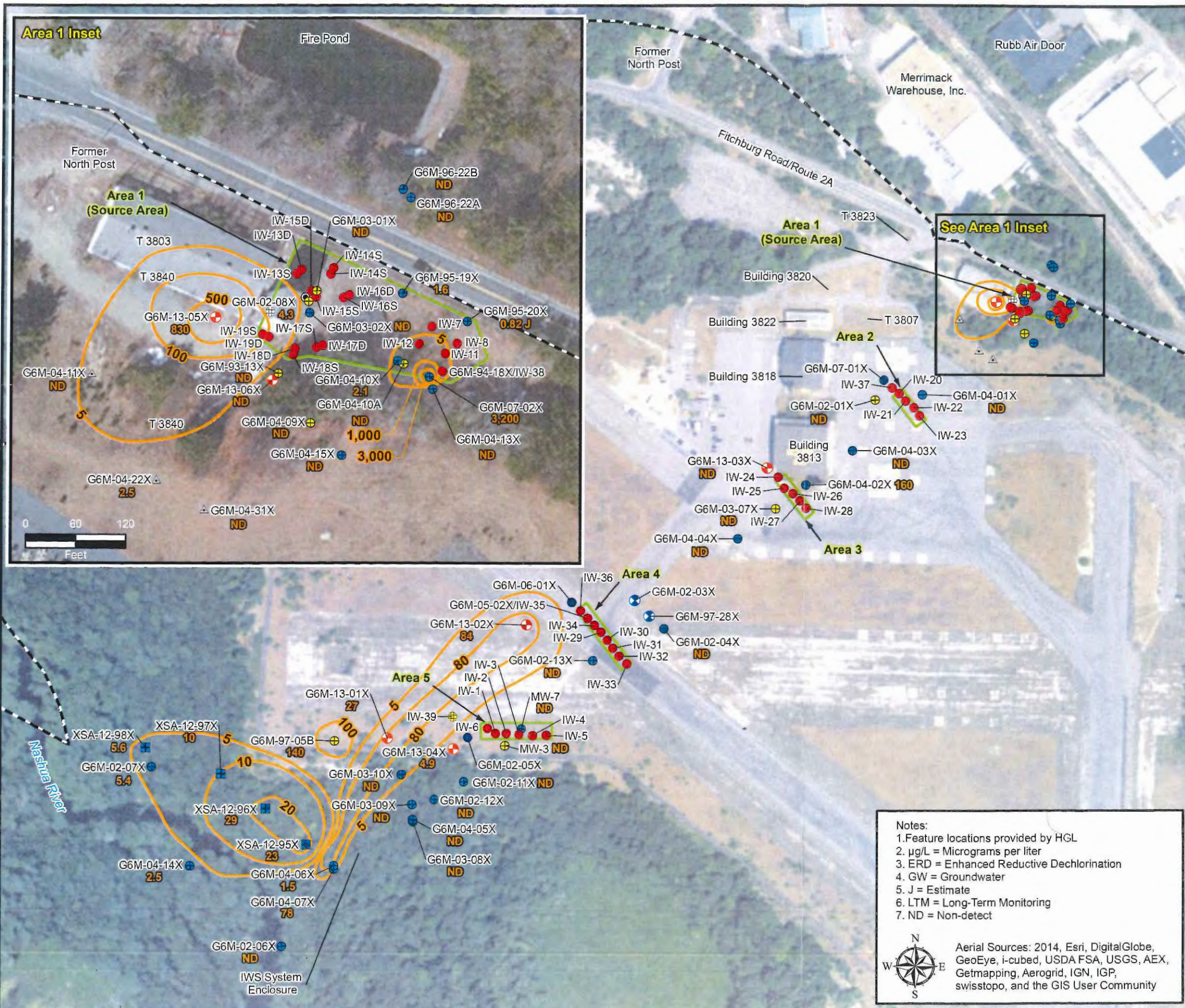


**Figure 4.4
Tetrachloroethene Concentrations in
Groundwater November 2016**



Legend

- ERD LTM Well - Sampled Semi-Annually
 - ERD LTM Well - Sampled Annually
 - ERD LTM Well - Sampled Biennially
 - LTM Well - Sampled Annually
 - Monitoring Well - Sampled Semi-Annually
 - Monitoring Well Converted to Injection Well
 - MicroWell - Sampled Annually
 - Injection Well
 - Injection Well Installed 01/2014
 - Dry Well
 - Floor Drain
- G6M-92-11X Well/Gauge/Piezometer Identification
- Tetrachloroethene (PCE) Concentration (µg/L)
 - Interpretive Tetrachloroethene (PCE) Contour (µg/L)
 - Former Fort Devens Boundary
 - ERD Injection Well Transect

Goal = 5 µg/L

References:
LTMMMP (KGS, 2016)

Notes:
 1. Feature locations provided by HGL
 2. µg/L = Micrograms per liter
 3. ERD = Enhanced Reductive Dechlorination
 4. GW = Groundwater
 5. J = Estimate
 6. LTM = Long-Term Monitoring
 7. ND = Non-detect

Aerial Sources: 2014, Esri, DigitalGlobe, GeoEye, i-cubed, USDA FSA, USGS, AEX, Getmapping, Aerogrid, IGN, IGP, swisstopo, and the GIS User Community

2016 Annual O&M and Monitoring Report
AOC 50

Former Fort Devens Army Installation and Sudbury Annex
Devens, Massachusetts

KOMAN Government Solutions, LLC
160 East Main Street, Suite 2F, Westborough, MA 01581

Date: 02/13/2017 Figure 4.4

0 150 300 Feet