

The background is a light blue gradient with several realistic water droplets of various sizes scattered across it. The droplets have highlights and shadows, giving them a three-dimensional appearance. The text is centered and rendered in a bold, blue, sans-serif font.

# **STATUS OF AYER'S WATER SUPPLY**

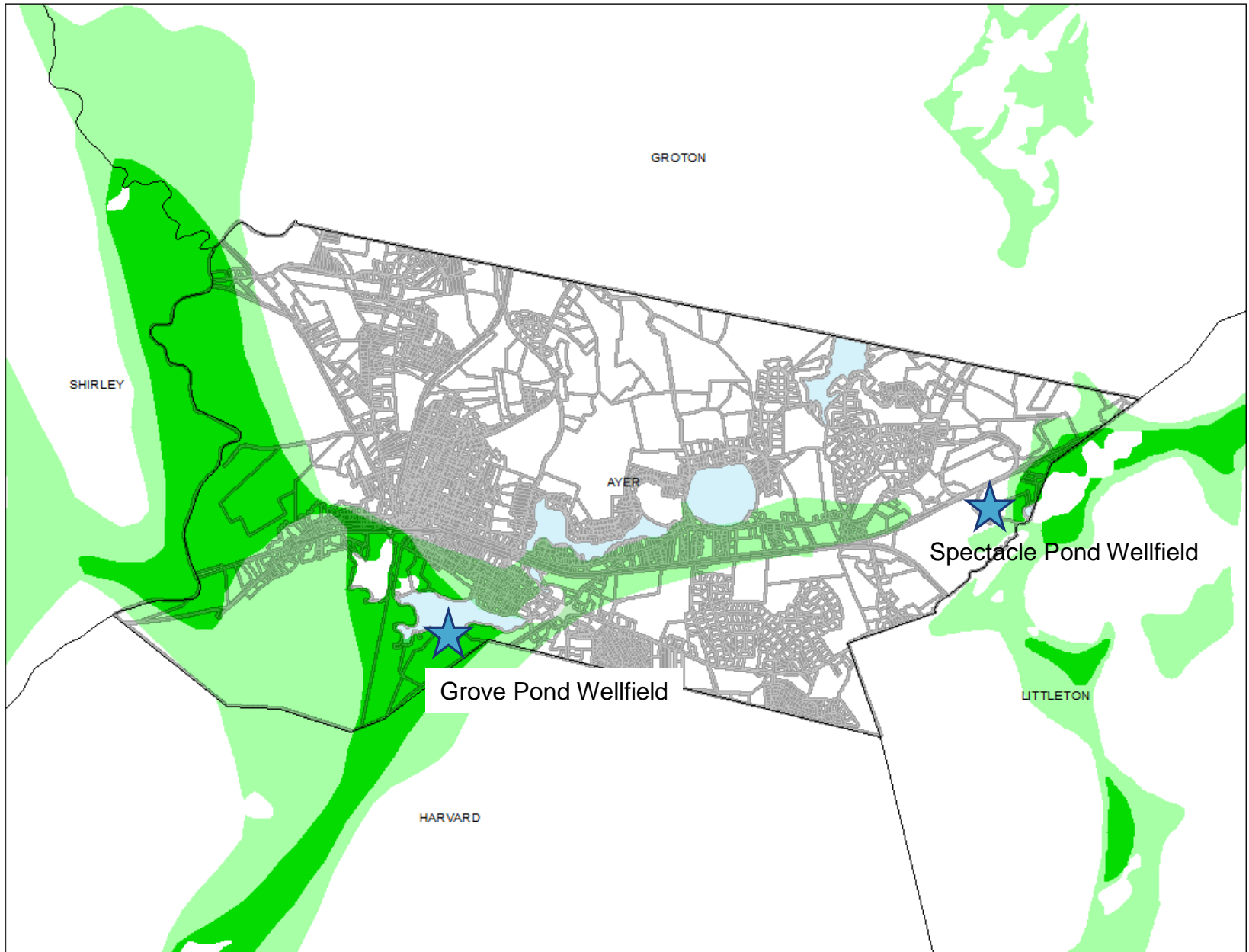
***AUGUST 16, 2016***

***AYER DEPARTMENT OF PUBLIC WORKS***

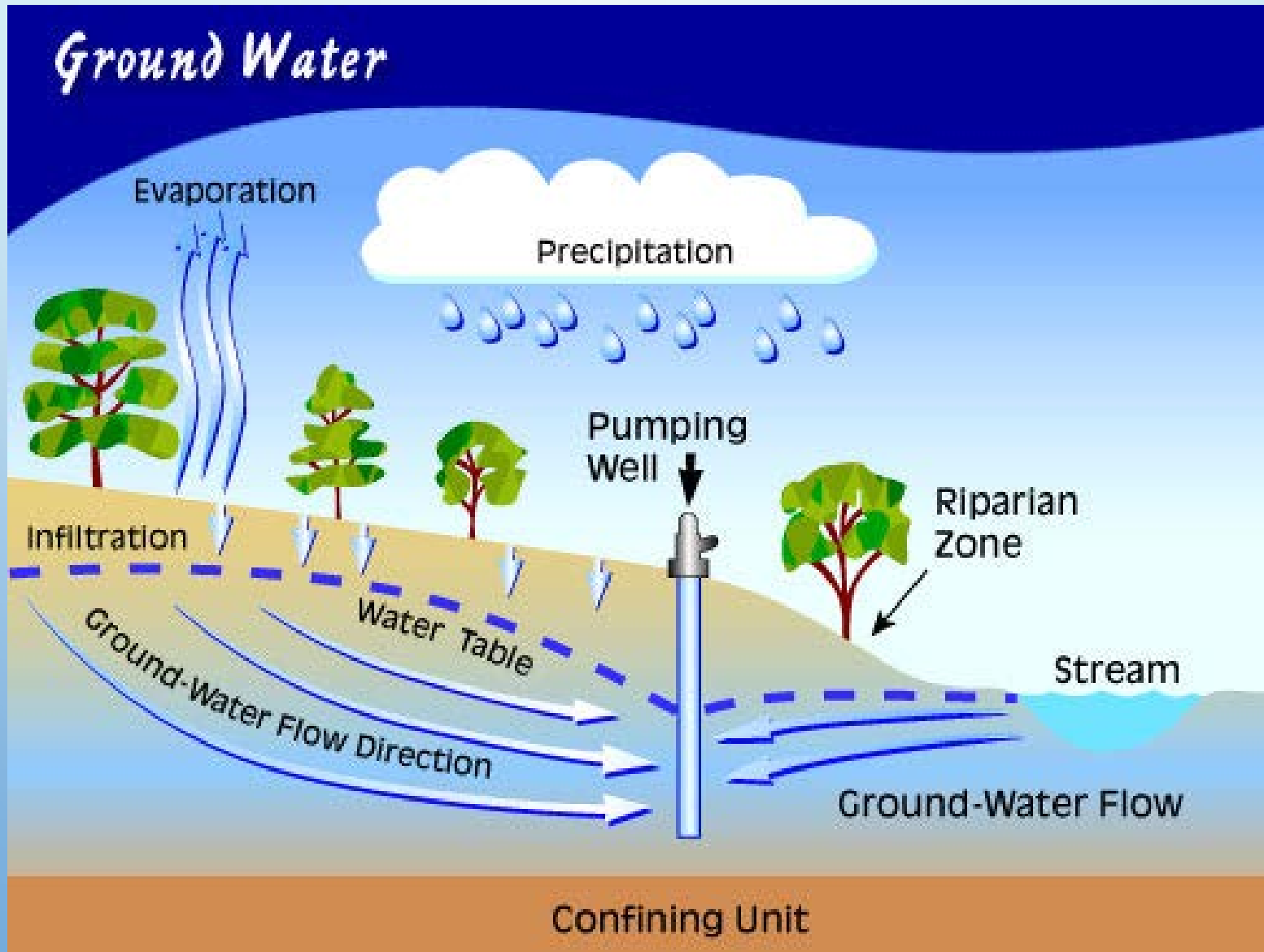
***MARK WETZEL, P.E.***

# Ayer's Water Supply

- **AYER HAS TWO WELLFIELDS:**
  - **GROVE POND (3 WELLS)**
  - **SPECTACLE POND (2 WELLS)**
- **2 WATER FILTRATION PLANTS TO REMOVE IRON AND MANGANESE FROM THE WATER**
- **GROVE POND WELLS WERE CONSTRUCTED IN 2012**
- **SPEC POND WELLS WERE CONSTRUCTED 1990 (#2) & 2010 (#1A)**



# IT RAINED LAST NIGHT – WHY DO WE NEED A WATER BAN?



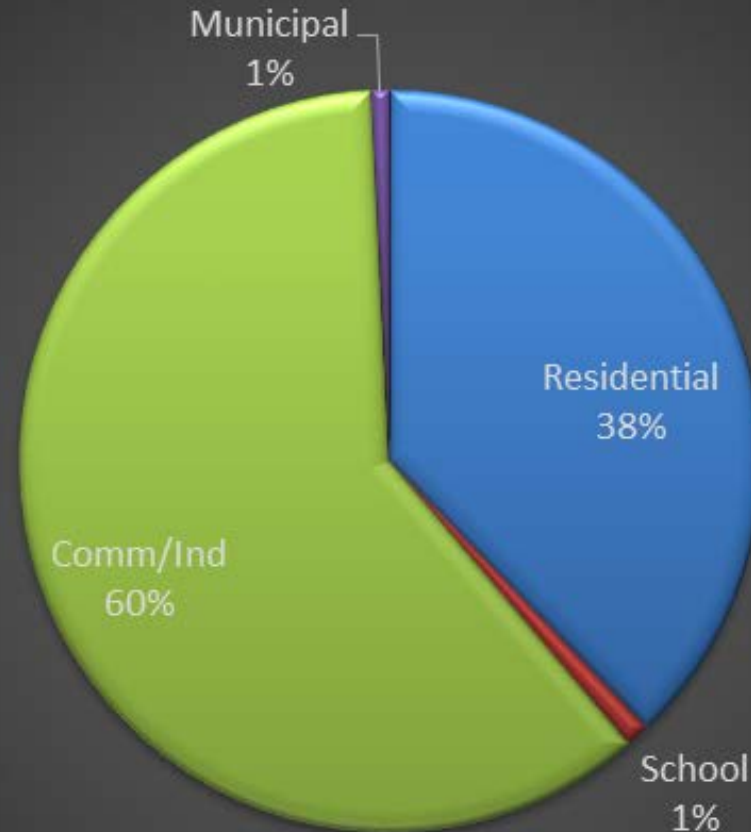
# WELL DATA

- WELLS ARE GRAVEL PACKED, OVERBURDEN WELLS WITH RECHARGE FROM THE SAND AND GRAVEL AQUIFER
- WELL YIELDS AND WITHDRAWALS ARE REGULATED BY MASSDEP / WATER MANAGEMENT ACT

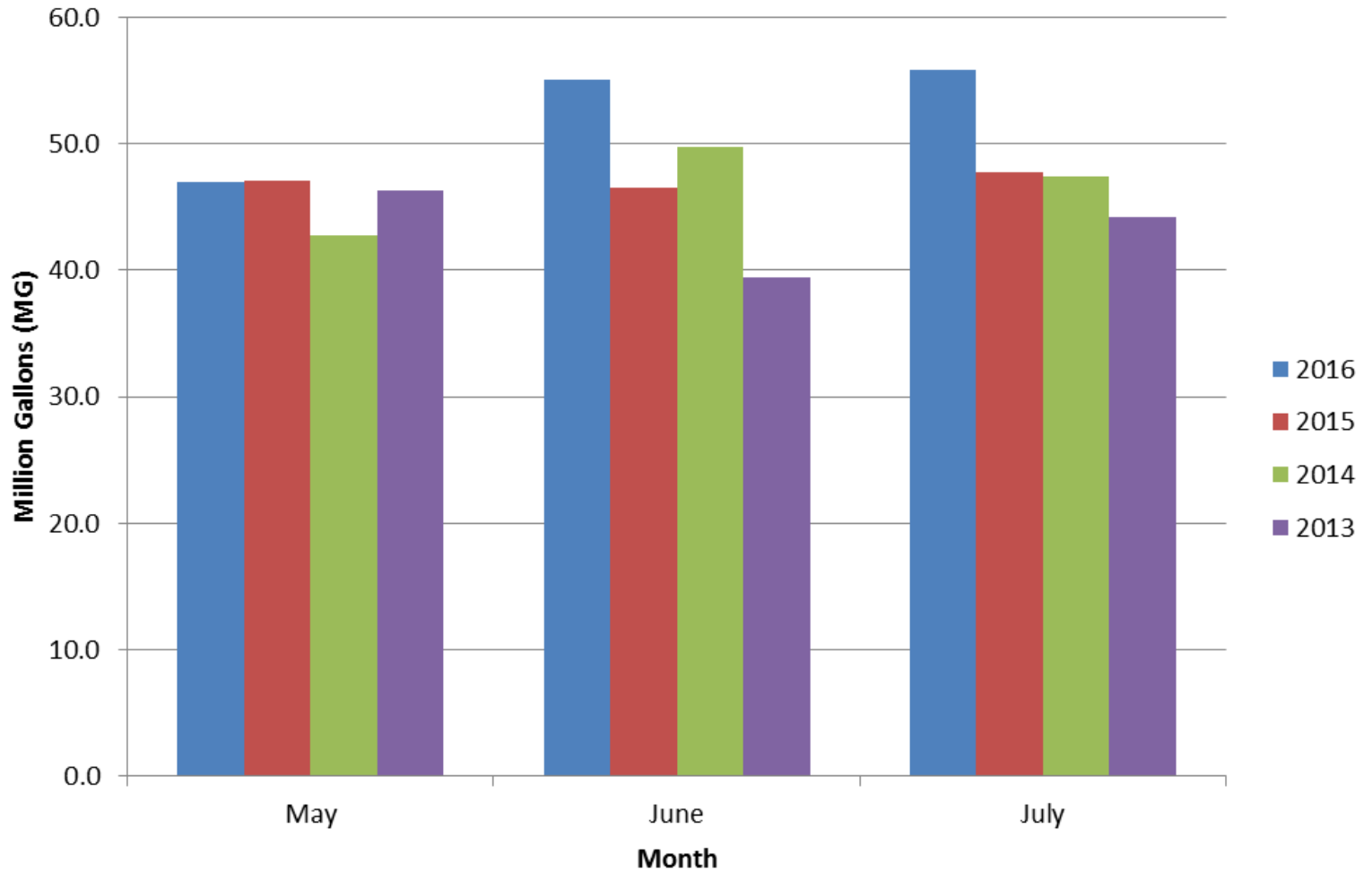
WELL	GP-1A	GP-2A	GP-3	SP-1A	SP2
Depth -FT	57	74	73	60	61
Max. MGD	1.0	0.89	0.86	1.1	1.0
Permitted MGD	0.44	0.44	0.44	0.58	0.58
Current MGD					

# WATER USE

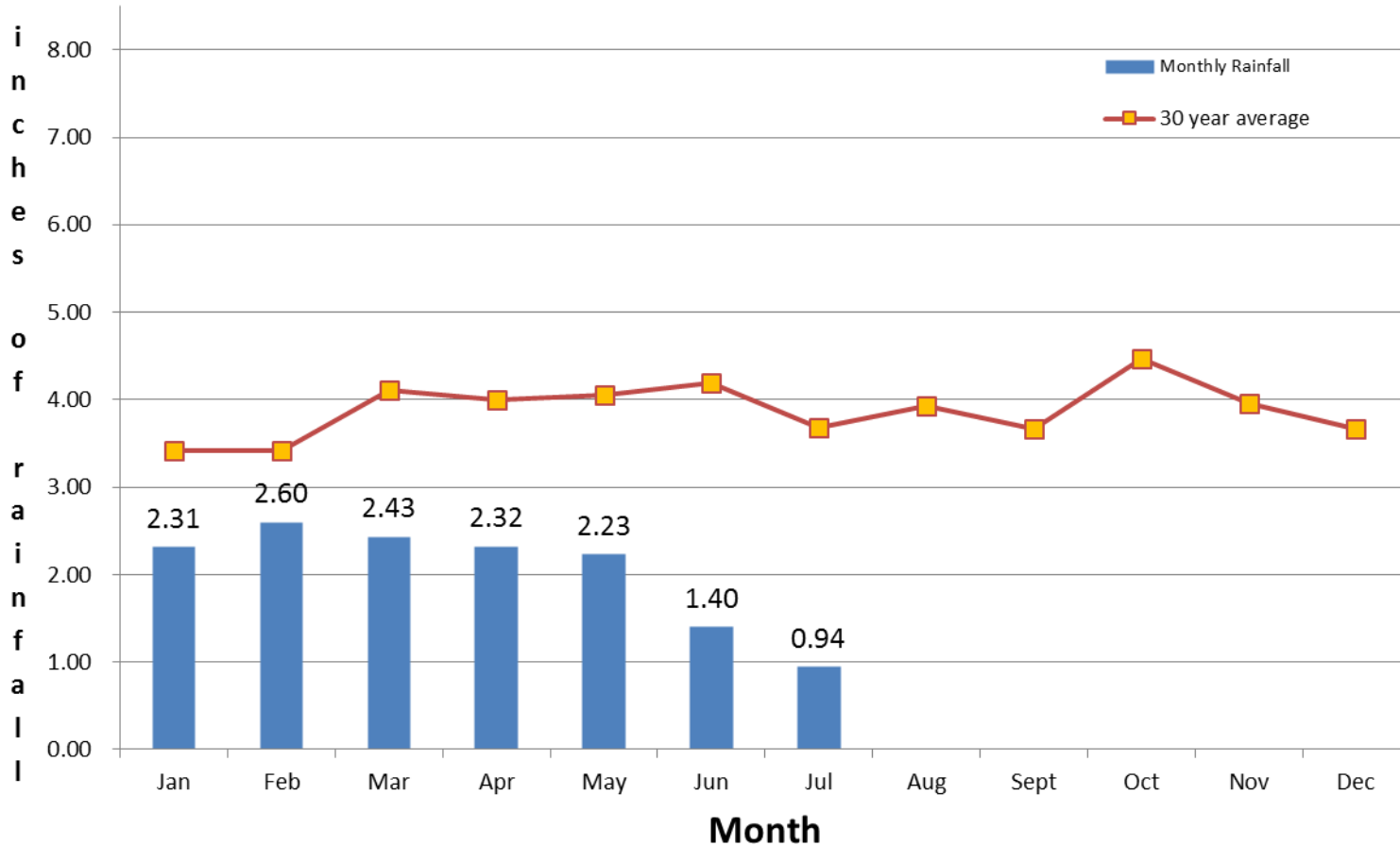
- Average Day Use - 1.27 MGD
- Maximum Day Use – 2.44 MGD
- Summer 2016 Average Day Use - 1.82 MGD
- Summer 2016 Maximum Day Use – 2.52 mgd



## Monthly Water Supply Production



# Littleton Precipitation Report 2016





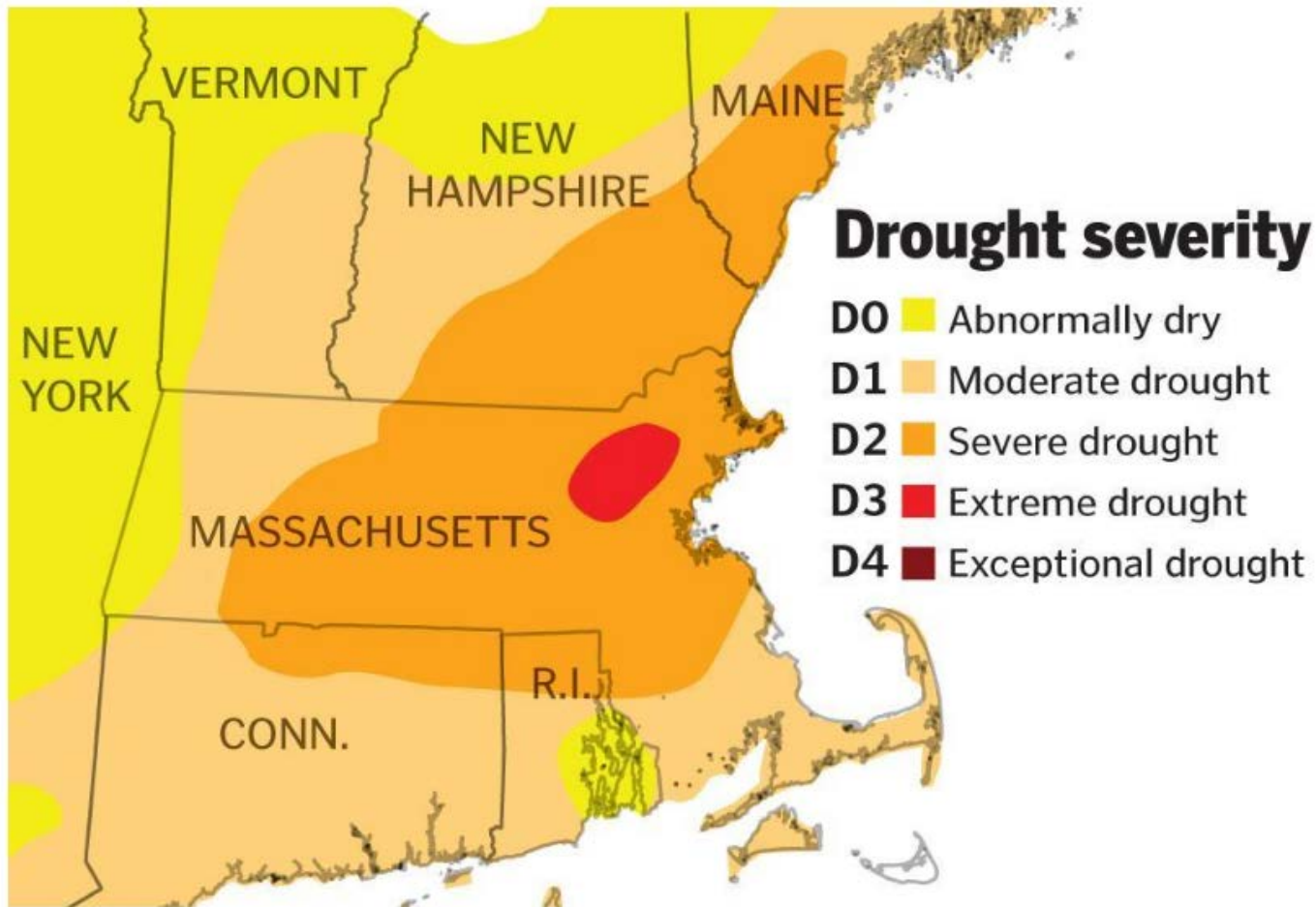


The Massachusetts Drought Management Task Force met Thursday to go over new data and suggestions for dealing with the prolonged dry season. Credit: Mike Deehan

# Experts Advise State To Get Serious About Drought

August 11, 2016

# Mass. drought worsens, with no end in sight



SOURCE: National Drought Mitigation Center

DAVID BUTLER/GLOBE STAFF

By Trisha Thadani and Dylan McGuinness | GLOBE CORRESPONDENTS AUGUST 11, 2016



Commonwealth of Massachusetts  
Executive Office of Energy & Environmental Affairs

## Department of Environmental Protection

One Winter Street Boston, MA 02108 • 617-292-5500

Charles D. Baker  
Governor

Karyn E. Polito  
Lieutenant Governor

Matthew A. Beaton  
Secretary

Martin Suuberg  
Commissioner

### **Guidance on Outdoor Water Use Restrictions for Specific Drought Levels**

Limiting outdoor water use helps ensure that enough water is available for essential needs, including drinking water, fire protection, crop irrigation and harvesting and our natural resources. Towns may have particular circumstances that make limiting water use more urgent to ensure water in an emergency.

Nothing in a Water Management Permit or Registration prevents a water supplier from implementing water use restrictions that are more stringent than those set forth in their permit, registration or in this guidance. If a community has adopted greater restrictions than those required or recommended by MassDEP, water users should **ABIDE BY THEIR WATER SUPPLIER'S RESTRICTIONS.**

#### **Regions in Drought Warning: Severe drought conditions**

- Outdoor water use should be banned.

# RECOMMENDED ACTION

- **DECLARE A STATE OF WATER SUPPLY CONSERVATION, IN ACCORDANCE WITH THE TOWN WATER USE RESTRICTION REGULATION**
- **IMPLEMENT RESTRICTION 5F. OUTDOOR WATER USE BAN**
- **“OUTDOOR WATER USE BAN: OUTDOOR WATER USES ARE CONTROLLED AS FOLLOWS:**
  - A. WATERING WITH HAND HOSE ONLY**
  - B. WATERING WITH WATER CAN ONLY**
  - C. ALL OTHER OUTDOOR WATERING SHALL BE PROHIBITED”**
- **BAN SHOULD REMAIN IN EFFECT UNTIL DROUGHT STATUS CHANGES**

# IMPLEMENTATION

- NOTIFY THE PUBLIC USING THE TOWN WEB SITE, FACEBOOK AND TWITTER
- NOTIFY THE PUBLIC WITH A TOWN-WIDE CODE RED TELEPHONE MESSAGE.
- NOTIFY MASSDEP OF WATER RESTRICTIONS.
- MAIL NOTIFICATIONS TO LARGE COMMERCIAL USERS, OUT-OF-TOWN PROPERTY MANAGERS / LANDLORDS WITH IRRIGATION SYSTEMS.
- MONITOR COMPLIANCE WITH WATER DIVISION STAFF AND TICKET VIOLATORS

# LONG TERM RECOMMENDATIONS

- **EVALUATE / MODIFY EXISTING WATER CONSERVATION MEASURES**
  - **ODD / EVEN**
  - **NO SUNDAY OUTDOOR USE**
  - **SPRINKLER SYSTEM DESIGN**
- **SEASONAL IRRIGATION WATER RATE ?**
- **BETTER INTERCONNECTION WITH DEVENS**
- **NEW "REPLACEMENT WELL" AT SPEC POND TO IMPROVE EFFICIENCY**