

YOUR
SKILLS FOCUSED
PUBLIC
HIGH SCHOOL



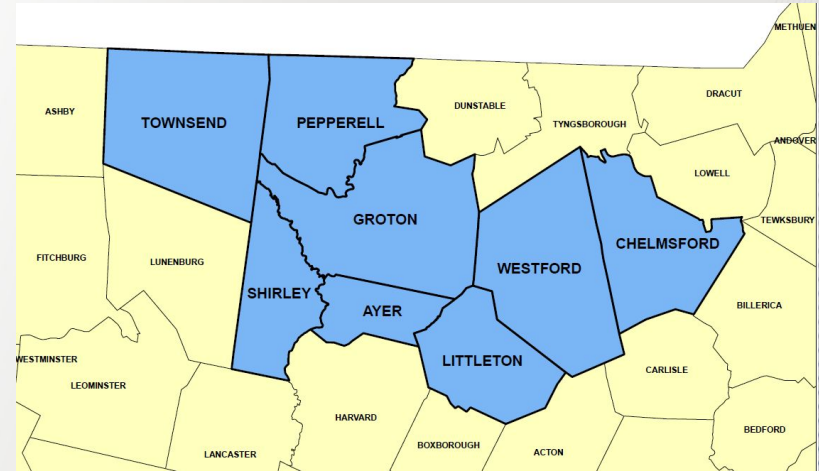
NASHOBA VALLEY TECHNICAL HIGH SCHOOL

AYER · CHELMSFORD · GROTON · LITTLETON · PEPPERELL · SHIRLEY · TOWNSEND · WESTFORD

NASHOBA VALLEY
TECHNICAL HIGH SCHOOL

NVTHS District Mission & Membership

- Nashoba Valley Technical High School was founded in 1965 by the Towns of Chelmsford, Groton, Littleton and Westford to provide career and technical education to students of this area.
- By 1979, the Nashoba Valley Technical High School District expanded to incorporate the three additional towns of Shirley, Pepperell, and Townsend.
- In 2012, the District grew once more with the addition of Ayer.



NVTHS School Committee

Charlie Ellis, Littleton (Chairman)
Karen Chapman, Townsend (Vice-Chairman)
Alicia Mallon, Westford (Secretary)
Chris Prehl, Ayer
Cory Prehl, Ayer Alternate
Lawrence MacDonald, Chelmsford
Samuel Poulten, Chelmsford
Patricia Wojtas, Chelmsford
Harrison Mayotte, Chelmsford Alternate
Robert Flynn, Groton
John Ellenberger, Groton Alternate

Ed Mullen, Littleton Alternate
Sandra Proctor, Pepperell
Paula Baldassari, Pepperell
TBD, Pepperell
TBD, Pepperell Alternate
Brian Fulmer, Shirley
TBD, Shirley Alternate
Sheldon Chapman, Townsend
TBD, Townsend Alternate
Abbie Mathew, Westford Alternate

Support Local Workforce Development Needs

District Town	Workforce Region/ MassHire Board	Priority Industries	Critical Industries
Littleton	Greater Boston Metro South/West	Health Care and Social Assistance Professional and Technical Services	Arts, Entertainment, & Recreation Hospitality Education Construction
Chelmsford Westford	Northeast Greater Lowell	Advanced Manufacturing Professional & Technical Services Health Care and Social Assistance	Construction Education Life Sciences Financial Services
Ayer Groton Pepperell Townsend Shirley	Central North Central	Health Care and Social Assistance Manufacturing Transportation Retail/Hospitality	Professional and Technical Services Construction Education



Source: Workforce Investment Board Regional Blueprints

NASHOBA VALLEY
TECHNICAL HIGH SCHOOL

Technical Programs - High School Offerings (all students)

Construction & Transportation Cluster (47% of students)

Automotive Collision Repair, Automotive Technology, Carpentry, Electrical Technology, and Plumbing Technology

Health and Services Cluster (31% of students)

Cosmetology, Culinary Arts, Hospitality Management, Early Childhood Education, Health Assisting, Dental Assisting, and Veterinary Assisting

Arts and Technology Cluster (22% of students)

Programming and Web Development, Television and Media Production, Design and Visual Communications, Advanced Manufacturing, Engineering Technology, and Robotics



Career and Technical Initiative (CTI) Evening/Adult Programs

Fully funded state grant programs providing 200 hours of FREE workforce training to unemployed & underemployed adults

Automotive**

Curriculum includes: Inspection, brakes, alignment, electrical, transmissions, engines, and more!

Industry credentials include: MA State Vehicle Inspector, Automotive Service Excellence (ASE), Valvoline, EPA 609, OSHA 10 General Industry, and Automotive Lift Institute

Plumbing**

Curriculum includes: Soldering, pipe connecting tools, threading machines (Wirsbo pex, Propress, Tracpipe, Watts pex, Shark Bites) & more!

Industry credentials include: Plumbing Tier 1 (110 hours), Viega PP/MP/MPS, TracPipe and OSHA 10 Construction Safety

CNC/Machine Operator*

Curriculum includes: Manual mill & lathe operations, Haas CNC mill & lathes, blueprint reading, bandsaws, micrometers, height gauges, Prototrak mill, optical comparators and more!

Industry credentials include: MACWIC Levels 1 & 2 and OSHA 10 General Industry

Electrical**

Curriculum includes: Hand & power tools, electrical code, wiring methods (lights, plugs, switches), measuring, sizing, cutting, bending, installation and more!

Industry credentials include: HotWork, Ramset training, and OSHA 10 Construction Safety



*New cohort began in January of 2024

**New cohorts starting in March of 2024

NASHOBA VALLEY
TECHNICAL HIGH SCHOOL

Post High School Placement

Graduate Follow Up Study Results	Percent positively placed
2022 Graduates of Nashoba Valley Technical High School	94.6%
2021 Graduates of Nashoba Valley Technical High School	91.2%*
2020 Graduates of Nashoba Valley Technical High School	98.8%
2018 Graduates of Nashoba Valley Technical High School	98.8%
2017 Graduates of Nashoba Valley Technical High School	99.4%
2016 Graduates of Nashoba Valley Technical High School	99.3%
2015 Graduates of Nashoba Valley Technical High School	97.5%

Please note: Perkins positive placement includes participation one year after graduation in employment, postsecondary education, or the military.

Data not available for 2019 with federal change from Perkins IV to Perkins V.

**First year data was collected at 6 months instead of 1 year.*

Cooperative Placement Partners

- 495 Chrysler Jeep
- A Funundes P&H
- Accutemp Engineering
- Acton Animal Hospital
- Acton Ford
- Acton Medical
- Allcrest Construction
- Andrew Woolfrey Roofing
- Ayer Kiddie Depot
- Bailey & Smith Construction
- Bailey's Bar & Grill
- Bayberry at Emerald Court
- Bisson Electric
- Boxborough Regency
- Brandano Plumbing
- Bratton Industries
- Bridges by Epoch
- Brooks Electric
- Brunelle Brothers electric
- Bryan Boyle Electric
- Burnham Electric
- Cambridge St. Animal Hospital
- Canine Odyssey
- Care Smile Dental
- Carstar Collision
- Catalano Construction
- Chelmsford Animal Hospital
- Chelmsford Center for the Arts
- Chelmsford Crossing
- Clark's Auto
- Complete Home Improvements
- Concord & Lexington Oral Surgeons
- Concord Lumber
- Dagoumas Electric llc
- Denommee Plumbing & Heating
- DeSilets Auto Inc,
- Dog Retreat & Spa
- Dr. Schofield & Martin
- Enright P&H
- F&S Electrical Service Inc.
- Farol Electric
- Gate City Electric
- Gray Boys Inc
- Hancock Building Associates
- Interstate Electric
- JAL Electric
- Jelich Farms, Inc.
- Jerry Daley P&H
- JM Electrical
- Lazaro Paving Corp.
- LeBlanc P&H
- Lewis Electric
- Littleton Animal Hospital
- Littleton Community Television
- MacCormack Plumbing, Inc
- Marianos Restaurant
- Marty's Landscaping, Inc.
- Massachusetts Bernedoodles, LLC
- Massachusetts Control Center Inc.
- MEC Electrical Contractors, Inc.
- Michael Albor Salons, Inc
- Milltown Plumbing
- Modern Electric
- MSPCA Angell West - Waltham
- Nashoba Parks Assisted Living
- Nashoba Tech Cafeteria
- Northern Acoustical Ceilings, Inc.
- Pepperell Collision
- Platt Builders
- Powderly & Sons
- Preferred Plumbing
- Primrose School of Tewksbury
- Reilly Electrical Contractors (RELCO)
- RT-13 Service & Repair
- Sal's Auto & Truck Repair
- Salon Beau - Andover
- Salt & Light Cafe
- Sanblaze Technology, Inc
- Schlager Co. Inc.
- Shattuck Machining
- Spolidoro and Sons
- Summer Street Grocers
- TOCCO
- Town of Groton-Electric Light Dept.
- Waite Custom Builder
- West Plumbing
- Westford Collision

Portrait of an NT Graduate - Attributes

- Respectful
- Responsible
- Resilient
- Resourceful
- Ready



Student Recognition

Congratulations to Connor McCall of Pepperell:

- 2024 Nominee for the
Massachusetts Association of
Vocational Administrators (MAVA)
Outstanding Vocational Technical Student Award



Connor McCall
TV Media Production/Theatre Arts

Student Recognition

Congratulations to PJ Zaferacopoulos
of Littleton: SkillsUSA National Gold Medalist!



PJ Zaferacopoulos
Cosmetology

Teacher Recognitions

Sayda Betsold

Carley Capraro



Current Student Representatives



Madison Dawes
Groton
TV Media/Theatre Arts
Early College



Samuel Hesketh
Westford
Carpentry



Nora Riel
Chelmsford
Culinary Arts



Rachel Vincent
Townsend
Health Assisting



Mitchell Tierney
Chelmsford
Electrical

FY25 Proposed Budget Overview



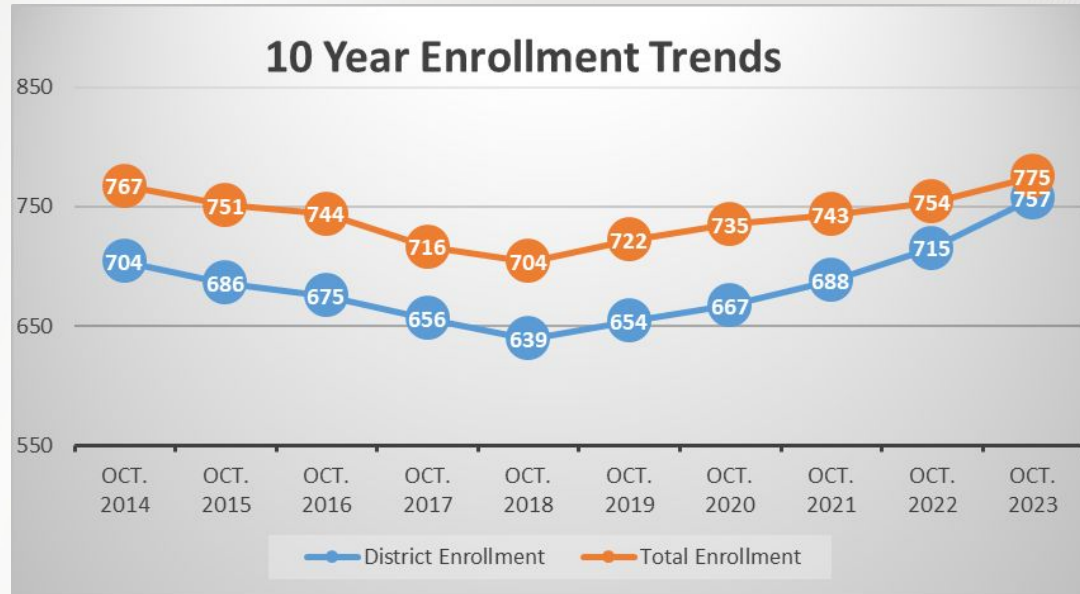
Budget & Finance Committee Members

- Karen Chapman, Townsend (Chair of Subcommittee)
- Charlie Ellis, Littleton
- Brian Fulmer, Shirley
- Lawrence MacDonald, Chelmsford
- Chris Prehl, Ayer

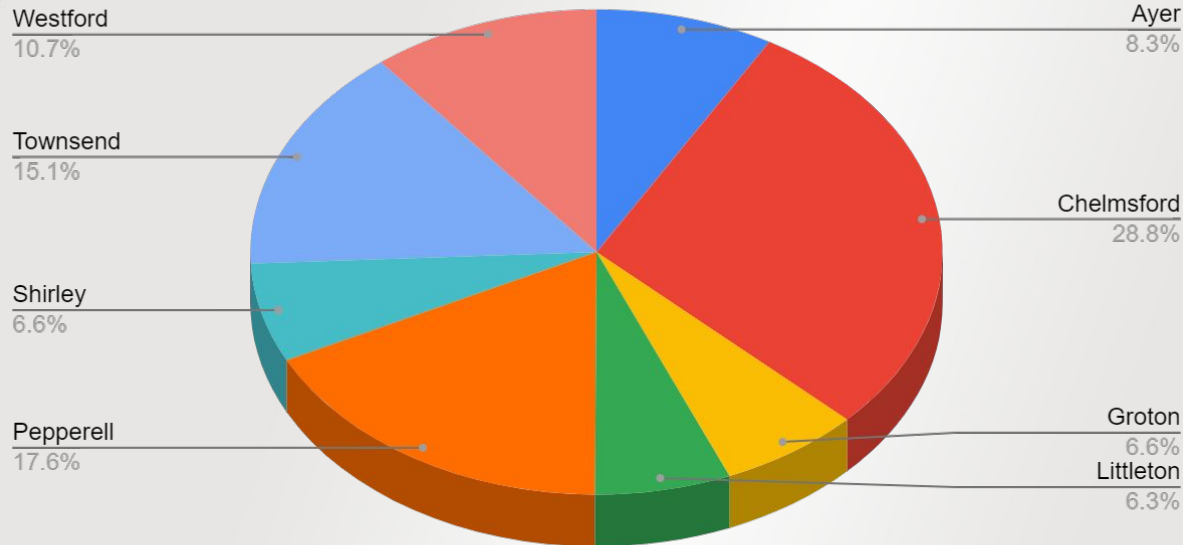
Enrollment Change at Nashoba Valley Tech

10/1/23 enrollment compared to 10/1/22:

- Increase of 21 students overall (from 754 to 775 students)
- Increase of 42 district students (from 715 to 757)
- Decrease of 21 school choice/non resident students (from 39 to 18, 16 school choice/2 non-resident)
- Anticipate total enrollment to increase to 800 students in FY26

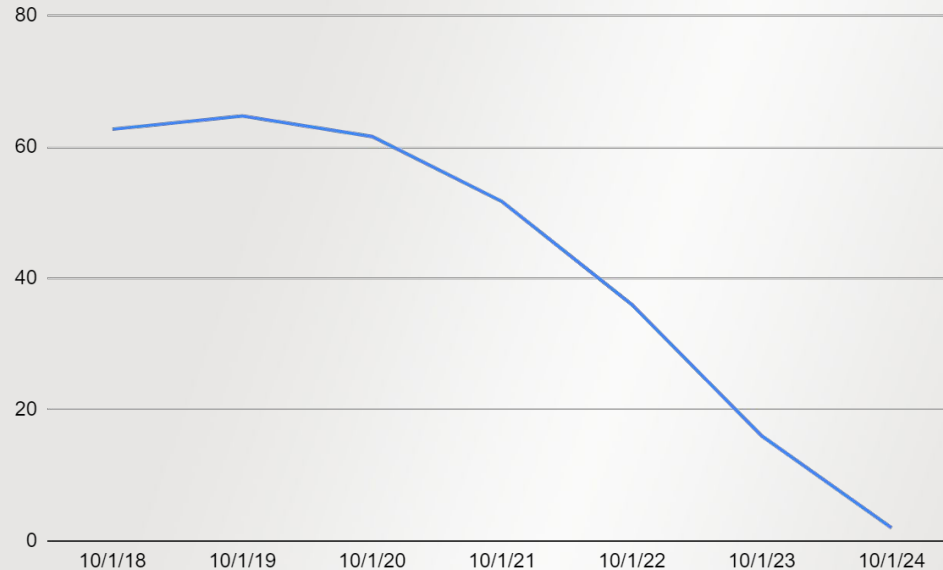


10/1/23 Town Enrollment Percentage



- -6 Ayer
- +6 Chelmsford
- +9 Groton
- +4 Littleton
- +1 Pepperell
- +6 Shirley
- +20 Townsend
- +2 Westford
- +42 District Students

School Choice Trends



October 1 Enrollment	School Choice Students
10/1/18	62.7
10/1/19	64.7
10/1/20	61.6
10/1/21	51.7
10/1/22	36.0
10/1/23	16.0
10/1/24 (projected)	3.0

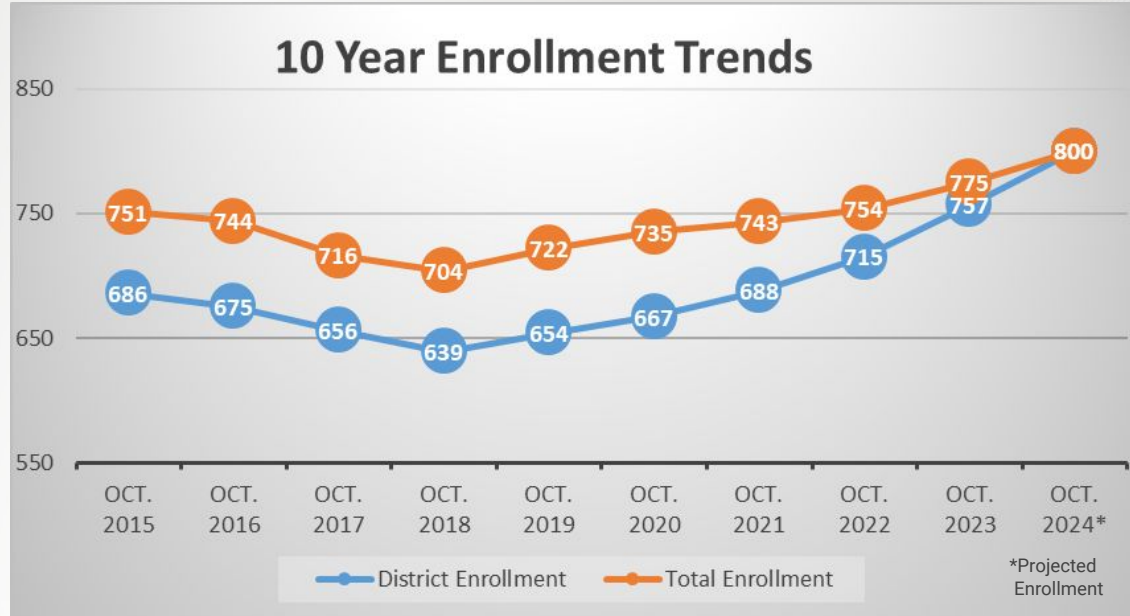
Special Populations Enrollment - High School Comparison

Special Populations (2023-2024)	Nashoba Tech	Ayer Shirley	Chelmsford	Groton Dunstable	Littleton	North Middlesex	Westford Academy
First Language not English	3.0%	6.6%	25.3%	1.7%	5.7%	4.6%	12.8%
English Language Learner	0.5%	2.7%	2.3%	0.4%	0.8%	1.1%	0.4%
Low-income	31.4%	27.9%	16.3%	7.4%	7.8%	22.7%	7.2%
Students with Disabilities	32.3%	16.7%	15.2%	14.9%	13.6%	23.6%	14.3%
High Needs	53.4%	39.6%	29.4%	21.0%	19.5%	39.1%	19.9%

Future Enrollment Projections (FY26 Budget)

10/1/24 *Projected* Enrollment compared to 10/1/23:

- Graduating 166 students (15 are school choice/2 non resident)
- Projecting incoming grade 9 class of 200 students (all district), plus possible transfers
- Projecting Increase of 43 district students (from 757 to 800 students)
- Projecting decrease of 15 school choice/ 2 non resident students



FY25 Budget Drivers

- Increase in special education student needs
 - Additional special education staffing needs including case management, direct teaching support, paraprofessional support, & other support staff
 - BCBA and RBT support
 - Special transportation
- Contractual increases, including staff step and lane changes
- Increase in cost of technical program instructional materials & equipment
- Increase in cost of building maintenance and capital projects
- Increases in other vendor contracts and fixed costs

FY25 Other Budget Considerations

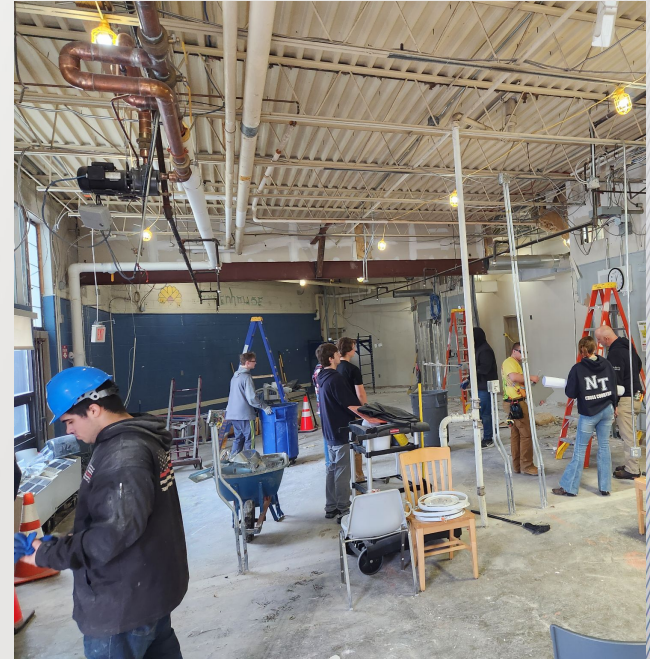
- Increasing capital needs reflective of an aging building/facility
- Changes in minimum contribution formula and state funding variables
- Uncertainty with transportation reimbursement
- Multi-year adjustment focus to reduce reliance on use of one-time funds such as excess & deficiency and school choice
- Committed to an annual funding for OPEB

FY25 and Beyond - Capital Needs

- Anticipate over \$20 million in capital needs over the next ten years
- Identified high need repairs and projects
 - Fire suppression system repairs (full replacement needed, completing in phases, phase II planned for FY25)
 - Several student passenger vans in need of replacement
 - Exterior doors, section of roof, boilers, and parking lot & curbing repairs
 - HVAC rooftop unit replacements
- Researching potential MSBA renovation/repair project, capital bond, and/or performance contracting in coming years and green energy grants

FY24 Capital Projects Underway

- 5 & 10 year capital plan and Workforce Skills Capital grant projects
 - Fire suppression system repairs (Phase I) and bid specifications for phase II
 - Elevator upgrade/replacement
 - Cosmetology renovation in process
 - Vet Assisting and Electrical modernization and space expansion in process (\$2.5 million state grant!)



Continue to partner, when possible, with our technical programs for onsite capital projects!

NASHOBA VALLEY
TECHNICAL HIGH SCHOOL

FY25 Anticipated & Future Savings

Technical program equipment and capital needs offset as a result of highly competitive Workforce Skills Capital Grant awards!

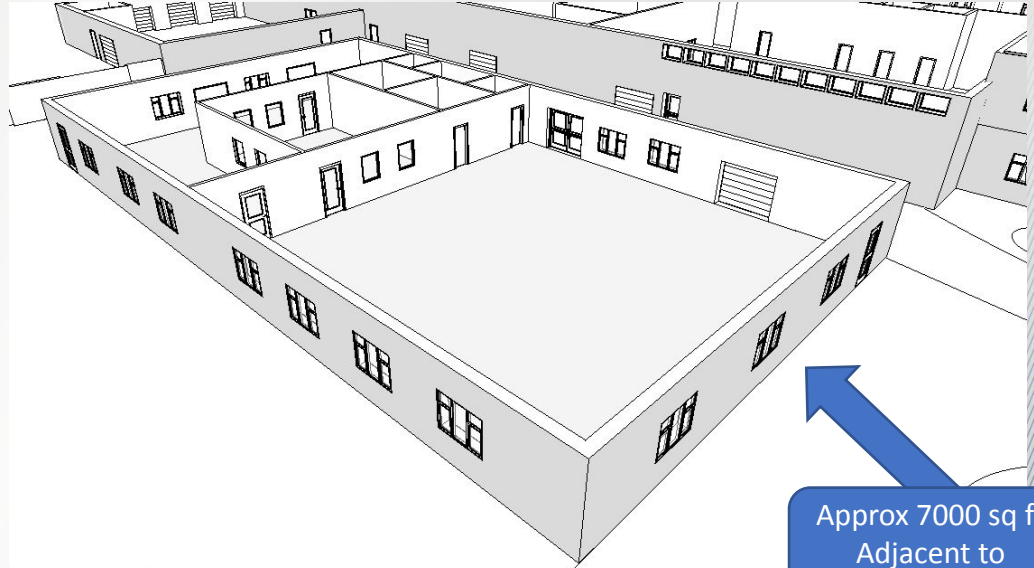


Recent Workforce Skills Grant Funding

- Plumbing (\$250,000)
- Cosmetology (\$500,000)
- Veterinary Science & Electrical Technology (\$2.5 million)
- Engineering, Programming, & Robotics (\$3.75 million)

FY24 Capital Projects Underway

- Received \$3.75 million competitive Workforce Skills Capital grant to fund addition and new equipment for Engineering, Robotics, and Programming & Web Development programs!



Approx 7000 sq ft
Adjacent to
Adv Mfg

Other FY25 Budget Considerations

- Capital Stabilization
 - Balance through 11/30/23 is \$1,660,576
 - Met goal to maintain fund balance of between 8-10% of annual budget
 - Consideration of additional future funding (FY26 and beyond) to offset upcoming capital needs and funds expended for projects

- OPEB (Other Post Employment Benefits)
 - Net OPEB Liability as of 6/30/23 \$9,771,571
 - Trust Fund Balance through 12/31/23 is \$2,294,728
 - FY25 proposed contribution of \$100,000

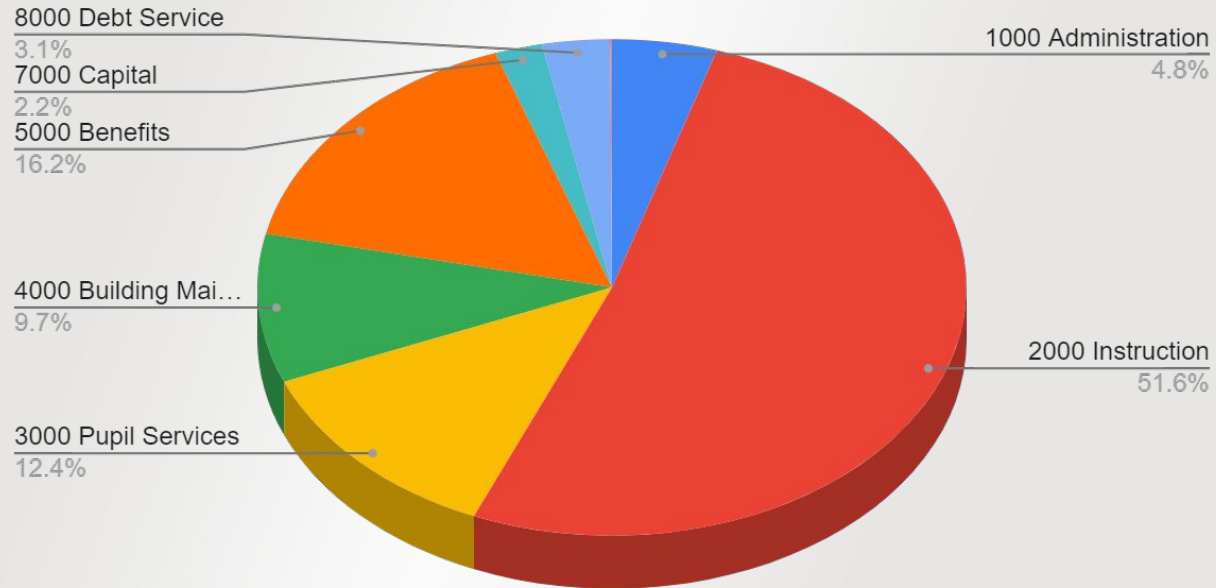
FY22 Per Pupil Expenditure Comparison

Technical School	Per Pupil Cost	Ranking (out of 29)
Minuteman	\$34,177	1
Shawsheen	\$26,175	6
Assabet	\$24,814	11
Northeast	\$24,070	15
Greater Lowell	\$23,526	18
Montachusett	\$22,714	22
Nashoba Tech	\$21,587	26

FY 2025 Proposed Budget by State Function Code

	FY24	FY25	Change	Change
<u>General Fund Expenses</u>	Voted	Proposed	\$	%
1000 Administration	822,523	885,676	63,153	7.68%
2000 Instruction	8,734,491	9,547,164	812,673	9.30%
3000 Pupil Services	2,011,309	2,299,465	288,155	14.33%
4000 Operations and Maintenance	1,716,199	1,791,901	75,702	4.41%
5000 Benefits and Fixed Charges	3,022,993	2,997,199	-25,795	-0.85%
7000 Acq., Improve & Replace Assets	375,000	400,000	25,000	6.67%
8000 Debt Retirement and Service	602,000	573,150	-28,850	-4.79%
9000 Programs with other School Districts	14,400	14,000	-400	-2.78%
Total General Fund Budget	17,298,916	18,508,553	1,209,638	6.99%
Add. instructional Costs funded by School Choice fund	332,588	345,562	12,974	3.90%
Total Budget (including School Choice fund)	17,631,505	18,854,115	1,222,612	6.93%

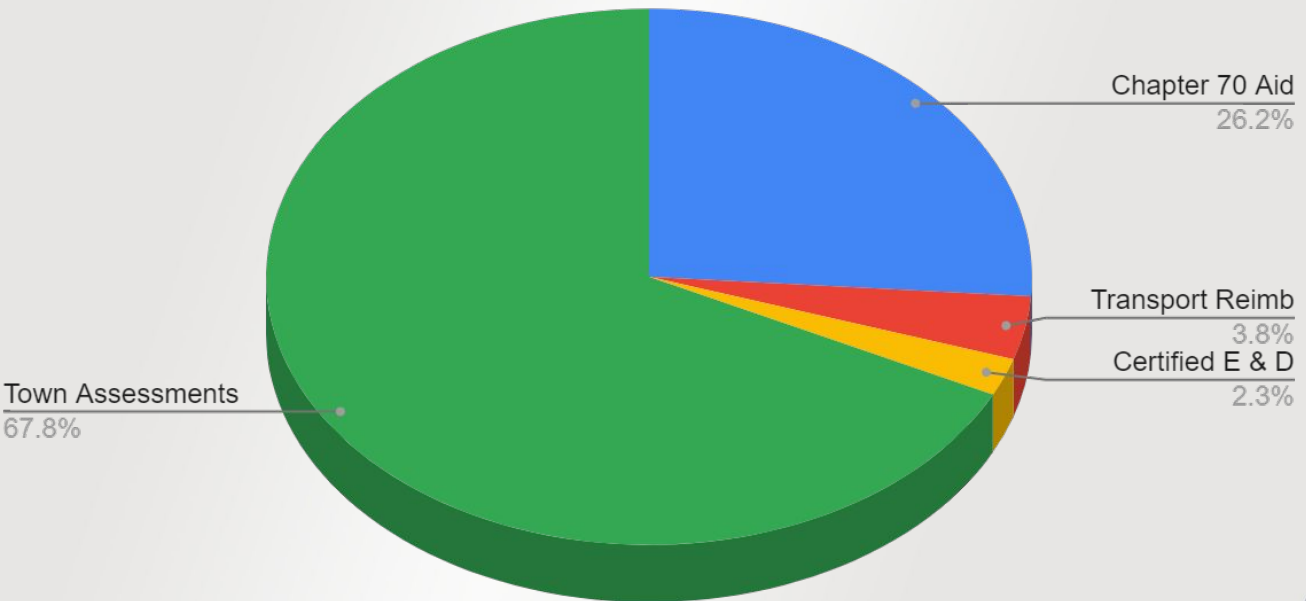
FY 2025 Proposed Budget by State Function Code



FY 2025 Estimated Revenue Plan

<u>Non-Assessment Revenue:</u>	FY24 Voted	FY25 Proposed	Difference	% Change
Chapter 70 School Aid	4,701,934	4,841,689	139,755	2.97%
Chapter 71 Regional Transportation Reimbursement	618,617	707,801	89,184	14.42%
Certified Excess & Deficiency	438,816	420,269	-18,547	-4.23%
Total Non-Assessment Revenue	5,759,367	5,969,759	210,392	3.65%
<u>Assessment Allocation by Category:</u>				
Minimum Contribution	9,846,166	10,758,937	912,771	9.27%
Transportation/Capital Equipment	791,383	906,707	115,324	14.57%
Additional (Offset)/Assessment	300,000	300,000	0	0%
Subtotal Non-Debt Assessments	10,937,549	11,965,644	1,028,095	9.40%
Debt (Expansion/Renovation)	602,000	573,150	-28,850	-4.79%
Total Member Assessment	11,539,549	12,538,794	999,245	8.66%

FY 2025 Estimated Revenue Plan



Fiscal Year 2025 Proposed Assessments by Member Town

Town	No. of District Students	Students per Town Percentage	Town's Minimum Contribution	Transportation / Capital Equip	Additional Assessment	Sub-total Assessment	Debt Service	Assessment 2024-2025
<i>Ayer</i>	63	8.32%	926,550	75,459	24,967	1,026,976	47,699	1,074,675
<i>Chelmsford</i>	218	28.80%	3,524,510	261,112	86,394	3,872,016	165,055	4,037,071
<i>Groton</i>	50	6.61%	849,159	59,888	19,815	928,862	37,857	966,719
<i>Littleton</i>	48	6.34%	781,285	57,493	19,023	857,801	36,342	894,143
<i>Pepperell</i>	133	17.57%	1,594,403	159,303	52,708	1,806,414	100,698	1,907,112
<i>Shirley</i>	50	6.61%	598,109	59,888	19,815	677,812	37,857	715,669
<i>Townsend</i>	114	15.06%	1,152,743	136,545	45,178	1,334,466	86,314	1,420,780
<i>Westford</i>	81	10.70%	1,332,178	97,019	32,100	1,461,297	61,328	1,522,625
	757	100.00%	10,758,937	906,707	300,000	11,965,644	573,150	12,538,794

Total Assessment Comparison (FY24 Voted & FY25 Proposed)

	# of Students	Town's Minimum Contribution	Transportation/ Capital Equip	Additional Assessment	Sub-total Assessment	Debt Service	Total Assessment
FY24	715	9,846,166	791,383	300,000	10,937,549	602,000	11,539,549
FY25	757	10,758,937	906,707	300,000	11,965,644	573,150	12,538,794
<i>Change</i>	+42	912,771	115,324	0	1,028,095	(28,850)	999,245

Driven by state funding formula



Next Steps in the FY25 Budget Process

- Public Hearing on the Budget: Tuesday, February 6, 2024 at 6:30 PM
- School Committee Meeting: Tuesday, February 6, 2024 at 7:00 PM (FY25 Budget Adoption)
- Meet with town finance committees and select boards, as needed
- 8 town meetings
- First town meeting: Saturday, March 23, 2024 in Westford

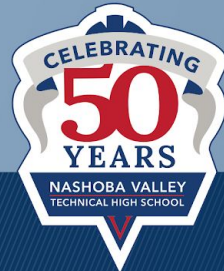
Public Services at Nashoba Tech

Currently Open for Service!!

- Automotive Tech & Collision Repair Services
- Design and Visual Communications Services
- Marketing program school store, online
- Cosmo Cuts Salon
- Programming and web services
- Culinary Art's Viking Bistro Restaurant

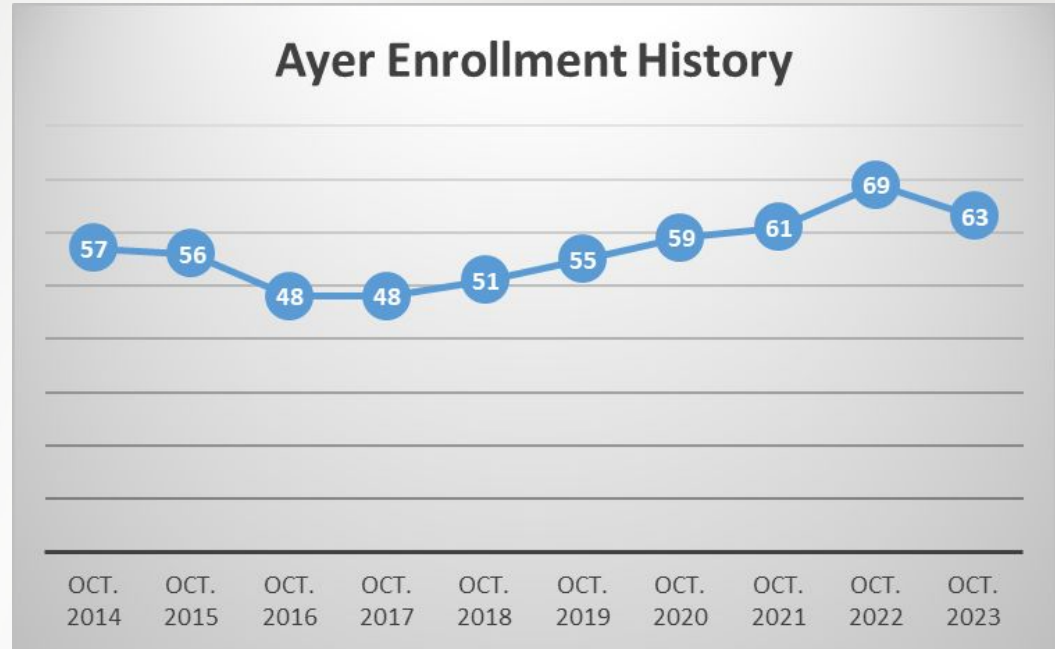
Thank you for participating today!

Member Town Assessments



Enrollment History by Town

- In 2022, Ayer had its highest enrollment at NT with 69 students.



Ayer Assessment Comparison (FY24 Voted & FY25 Proposed)

	# of Students	Students per Town Percentage	Town's Minimum Contribution	Transportation / Capital Equip	Additional Assessment	Sub-total Assessment	Debt Service	Total Assessment
FY24	69	9.65%	973,253	76,371	28,951	1,078,575	58,095	1,136,670
FY25	63	8.32%	926,550	75,459	24,967	1,026,976	47,699	1,074,675
<i>Change</i>	-6	-1.33%	(46,703)	(912)	(3,984)	(51,599)	(10,396)	(61,995)



Driven by state funding formula

Ayer - Technical Program Enrollment

%
of Students

Construction & Transportation Cluster

Automotive Collision Repair, Automotive Technology, Carpentry, Electrical Technology, and Plumbing Technology

50%

Health and Services Cluster

Cosmetology, Culinary Arts, Hospitality Management, Marketing, Early Childhood Education, Health Assisting, Dental Assisting, and Veterinary Assisting

33%

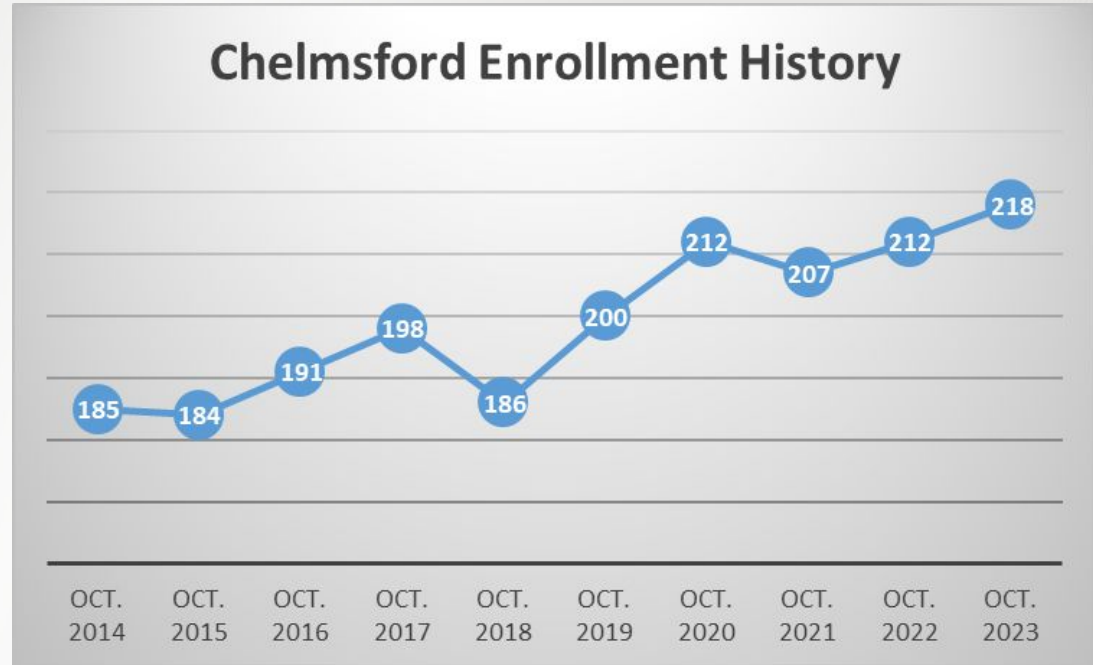
Arts and Technology Cluster

Programming and Web Development, Television and Media Production, Design and Visual Communications, Advanced Manufacturing, Engineering Technology, Robotics, and Biotechnology

17%

Enrollment History by Town

- In 1976, Chelmsford had its highest enrollment at NT with 313 students.



Chelmsford Assessment Comparison (FY24 Voted & FY25 Proposed)

	# of Students	Students per Town Percentage	Town's Minimum Contribution	Transportation / Capital Equip	Additional Assessment	Sub-total Assessment	Debt Service	Total Assessment
FY24	212	29.65%	3,357,610	234,648	88,951	3,681,209	178,495	3,859,704
FY25	218	28.80%	3,524,510	261,112	86,394	3,872,016	165,055	4,037,071
<i>Change</i>	+6	-0.85%	166,900	26,464	(2,557)	190,807	(13,440)	177,367



Driven by state funding formula

Chelmsford - Technical Program Enrollment

%
of Students

Construction & Transportation Cluster

Automotive Collision Repair, Automotive Technology, Carpentry, Electrical Technology, and Plumbing Technology

40%

Health and Services Cluster

Cosmetology, Culinary Arts, Hospitality Management, Marketing, Early Childhood Education, Health Assisting, Dental Assisting, and Veterinary Assisting

33%

Arts and Technology Cluster

Programming and Web Development, Television and Media Production, Design and Visual Communications, Advanced Manufacturing, Engineering Technology, Robotics, and Biotechnology

27%

Enrollment History by Town

- In 1983, Groton had its highest enrollment at NT with 78 students.



Groton Assessment Comparison (FY24 Voted & FY25 Proposed)

	# of Students	Students per Town Percentage	Town's Minimum Contribution	Transportation / Capital Equip	Additional Assessment	Sub-total Assessment	Debt Service	Total Assessment
FY24	41	5.73%	665,553	45,380	17,203	728,136	34,520	762,656
FY25	50	6.61%	849,159	59,888	19,815	928,862	37,857	966,719
<i>Change</i>	+9	+0.88%	183,606	14,508	2,612	200,726	3,337	204,063

Driven by state funding formula

Groton - Technical Program Enrollment

%
of Students

Construction & Transportation Cluster

Automotive Collision Repair, Automotive Technology, Carpentry, Electrical Technology, and Plumbing Technology

44%

Health and Services Cluster

Cosmetology, Culinary Arts, Hospitality Management, Marketing, Early Childhood Education, Health Assisting, Dental Assisting, and Veterinary Assisting

23%

Arts and Technology Cluster

Programming and Web Development, Television and Media Production, Design and Visual Communications, Advanced Manufacturing, Engineering Technology, Robotics, and Biotechnology

33%

Enrollment History by Town

- In 1980, Littleton had its highest enrollment at NT with 95 students.



Littleton Assessment Comparison (FY24 Voted & FY25 Proposed)

	# of Students	Students per Town Percentage	Town's Minimum Contribution	Transportation / Capital Equip	Additional Assessment	Sub-total Assessment	Debt Service	Total Assessment
FY24	44	6.15%	678,828	48,700	18,462	745,990	37,046	783,036
FY25	48	6.34%	781,285	57,493	19,023	857,801	36,342	894,143
<i>Change</i>	+4	+0.19%	102,457	8,793	561	111,811	(704)	111,107



Driven by state funding formula

Littleton - Technical Program Enrollment

%
of Students

Construction & Transportation Cluster

Automotive Collision Repair, Automotive Technology, Carpentry, Electrical Technology, and Plumbing Technology

41%

Health and Services Cluster

Cosmetology, Culinary Arts, Hospitality Management, Marketing, Early Childhood Education, Health Assisting, Dental Assisting, and Veterinary Assisting

33%

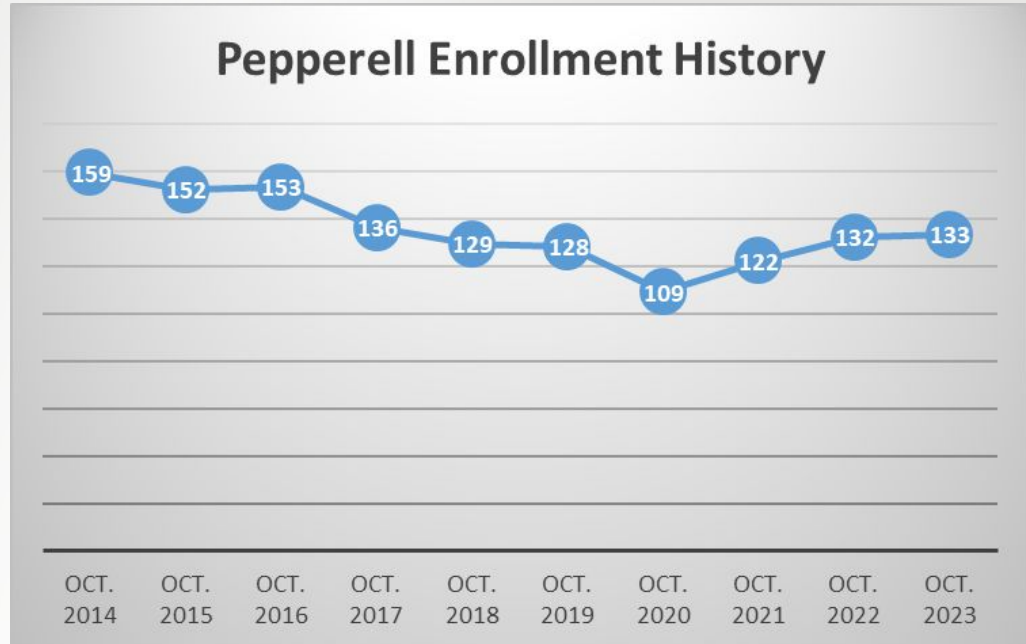
Arts and Technology Cluster

Programming and Web Development, Television and Media Production, Design and Visual Communications, Advanced Manufacturing, Engineering Technology, Robotics, and Biotechnology

26%

Enrollment History by Town

- In 2014, Pepperell had its highest enrollment at NT with 159 students.



Pepperell Assessment Comparison (FY24 Voted & FY25 Proposed)

	# of Students	Students per Town Percentage	Town's Minimum Contribution	Transportation / Capital Equip	Additional Assessment	Sub-total Assessment	Debt Service	Total Assessment
FY24	132	18.46%	1,509,393	146,102	55,384	1,710,879	111,139	1,822,018
FY25	133	17.57%	1,594,403	159,303	52,708	1,806,414	100,698	1,907,112
<i>Change</i>	+1	+0.89%	85,010	13,201	(2,676)	95,535	(10,441)	85,094



Driven by state funding formula

Pepperell - Technical Program Enrollment

%
of Students

Construction & Transportation Cluster

Automotive Collision Repair, Automotive Technology, Carpentry, Electrical Technology, and Plumbing Technology

50%

Health and Services Cluster

Cosmetology, Culinary Arts, Hospitality Management, Marketing, Early Childhood Education, Health Assisting, Dental Assisting, and Veterinary Assisting

29%

Arts and Technology Cluster

Programming and Web Development, Television and Media Production, Design and Visual Communications, Advanced Manufacturing, Engineering Technology, Robotics, and Biotechnology

21%

Enrollment History by Town

- In 2014, Shirley had its highest enrollment at NT with 85 students.



Shirley Assessment Comparison (FY24 Voted & FY25 Proposed)

	# of Students	Students per Town Percentage	Town's Minimum Contribution	Transportation / Capital Equip	Additional Assessment	Sub-total Assessment	Debt Service	Total Assessment
FY24	44	6.15%	512,192	48,700	18,462	579,354	37,046	616,400
FY25	50	6.61%	598,109	59,888	19,815	677,812	37,857	715,669
<i>Change</i>	+6	+0.46%	85,917	11,188	1,353	98,458	811	99,269



Driven by state funding formula

Shirley - Technical Program Enrollment

%
of Students

Construction & Transportation Cluster

Automotive Collision Repair, Automotive Technology, Carpentry, Electrical Technology, and Plumbing Technology

35%

Health and Services Cluster

Cosmetology, Culinary Arts, Hospitality Management, Marketing, Early Childhood Education, Health Assisting, Dental Assisting, and Veterinary Assisting

40%

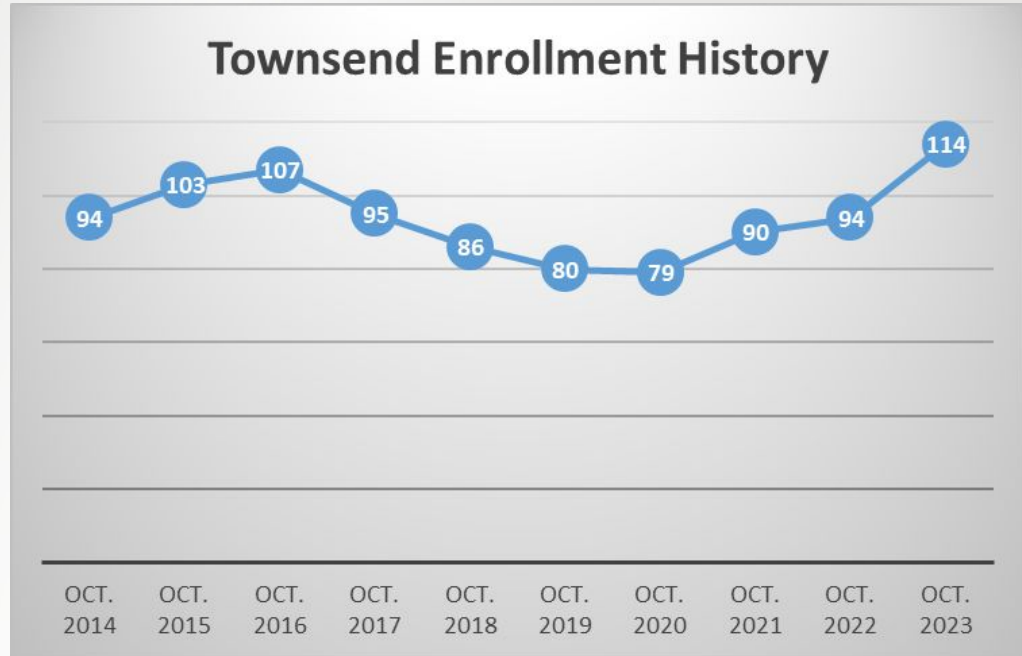
Arts and Technology Cluster

Programming and Web Development, Television and Media Production, Design and Visual Communications, Advanced Manufacturing, Engineering Technology, Robotics, and Biotechnology

25%

Enrollment History by Town

- This year Townsend has its highest historical enrollment at NT with 114 students.



Townsend Assessment Comparison (FY24 Voted & FY25 Proposed)

	# of Students	Students per Town Percentage	Town's Minimum Contribution	Transportation / Capital Equip	Additional Assessment	Sub-total Assessment	Debt Service	Total Assessment
FY24	94	13.15%	940,349	104,042	39,441	1,083,832	79,144	1,162,976
FY25	114	15.06%	1,152,743	136,545	45,178	1,334,466	86,314	1,420,780
<i>Change</i>	+20	+1.91%	212,394	32,503	5,737	250,634	7,170	257,804



Driven by state funding formula

Townsend - Technical Program Enrollment

%
of Students

Construction & Transportation Cluster

Automotive Collision Repair, Automotive Technology, Carpentry, Electrical Technology, and Plumbing Technology

43%

Health and Services Cluster

Cosmetology, Culinary Arts, Hospitality Management, Marketing, Early Childhood Education, Health Assisting, Dental Assisting, and Veterinary Assisting

33%

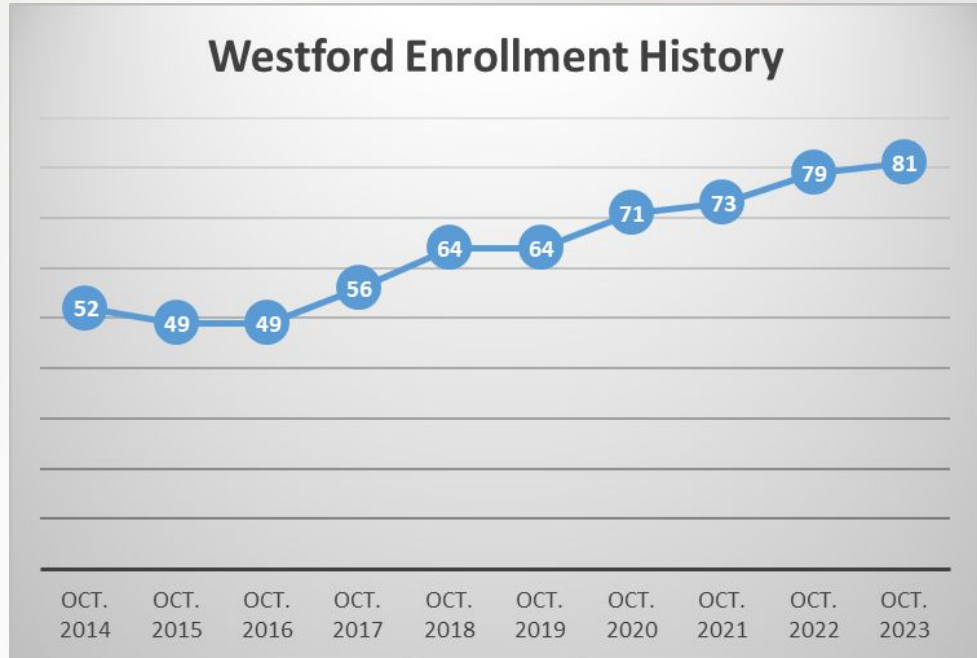
Arts and Technology Cluster

Programming and Web Development, Television and Media Production, Design and Visual Communications, Advanced Manufacturing, Engineering Technology, Robotics, and Biotechnology

24%

Enrollment History by Town

- In 1975, Westford had its highest enrollment at NT with 237 students.



Westford Assessment Comparison (FY24 Voted & FY25 Proposed)

	# of Students	Students per Town Percentage	Town's Minimum Contribution	Transportation / Capital Equip	Additional Assessment	Sub-total Assessment	Debt Service	Total Assessment
FY24	79	11.05%	1,208,988	87,440	33,146	1,329,574	66,515	1,396,089
FY25	81	10.70%	1,332,178	97,019	32,100	1,461,297	61,328	1,522,625
<i>Change</i>	+2	-0.35%	123,190	9,579	(1,046)	131,723	(5,187)	126,536



Driven by state funding formula

Westford - Technical Program Enrollment

%
of Students

Construction & Transportation Cluster

Automotive Collision Repair, Automotive Technology, Carpentry, Electrical Technology, and Plumbing Technology

44%

Health and Services Cluster

Cosmetology, Culinary Arts, Hospitality Management, Marketing, Early Childhood Education, Health Assisting, Dental Assisting, and Veterinary Assisting

29%

Arts and Technology Cluster

Programming and Web Development, Television and Media Production, Design and Visual Communications, Advanced Manufacturing, Engineering Technology, Robotics, and Biotechnology

27%